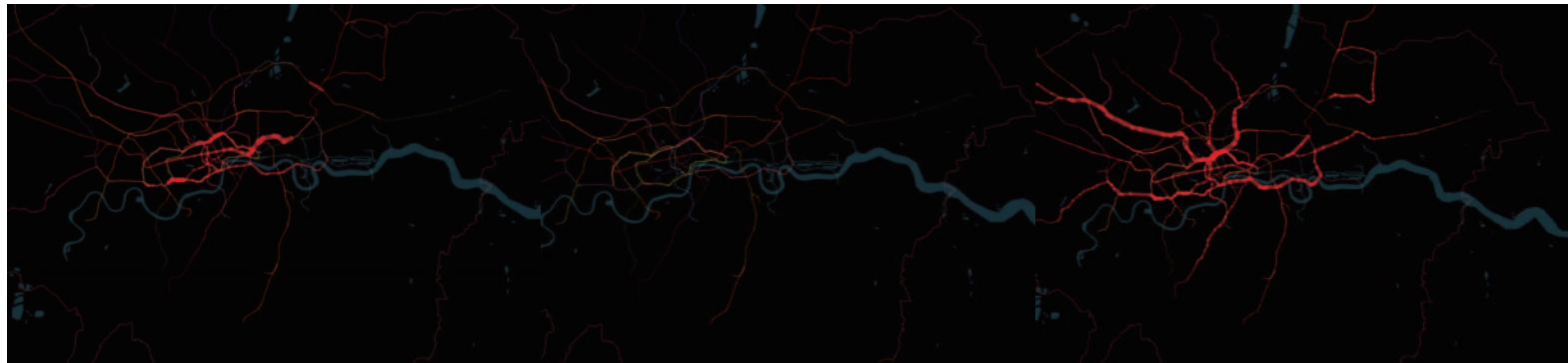


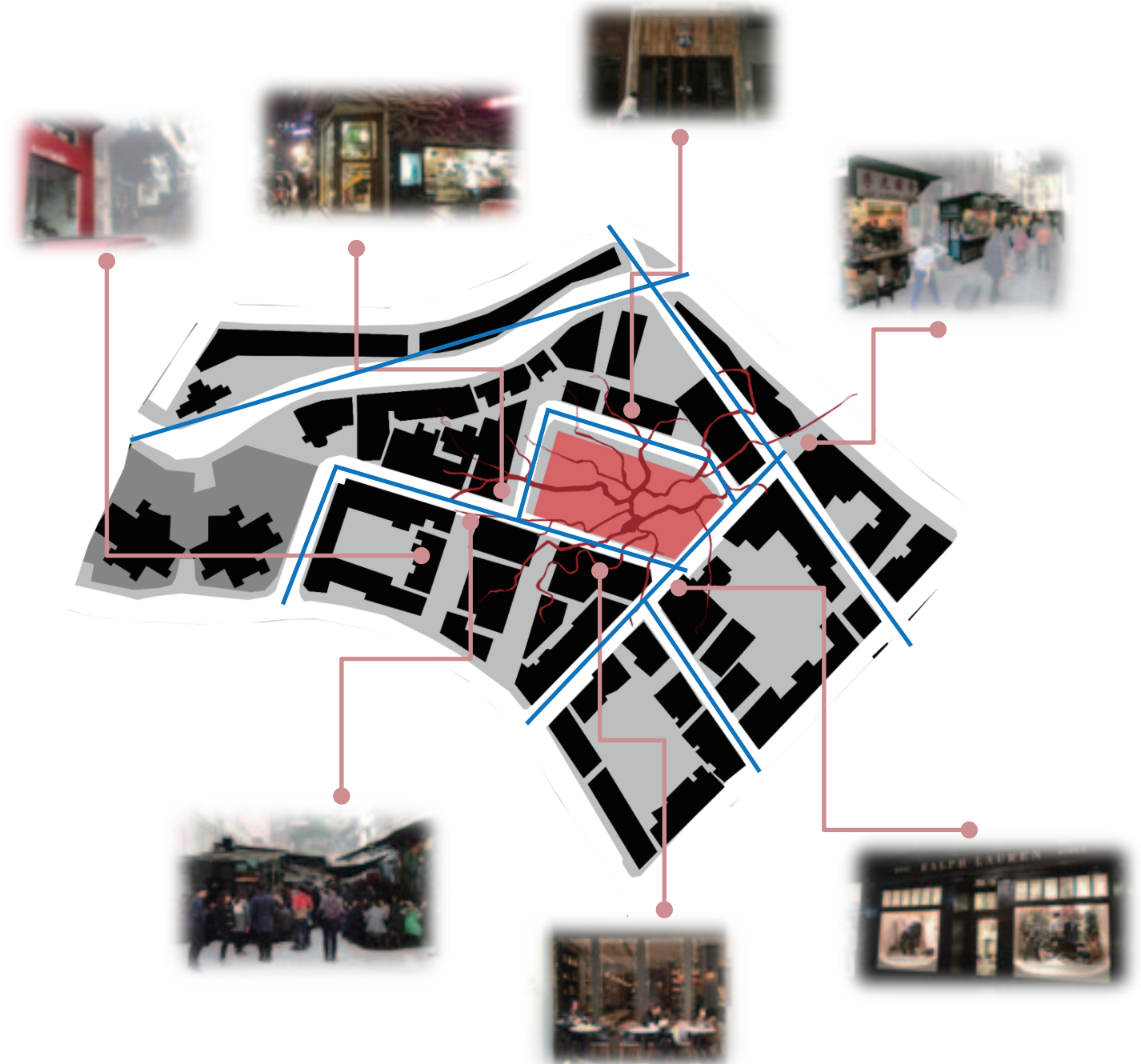
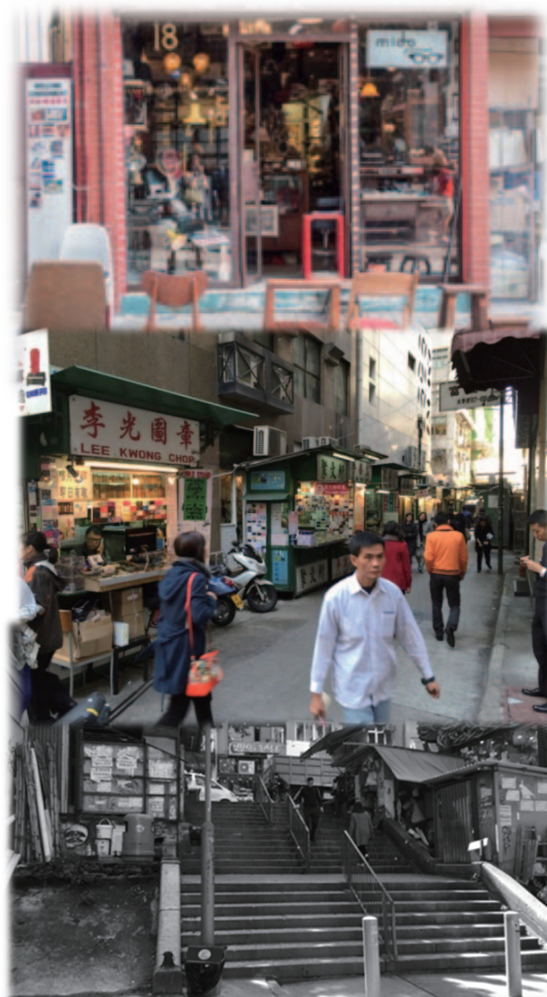
THE PULSE OF CITY



Sheung Wan is one of the earliest development district in Hong Kong. It is full of stories and history through years and years of development.

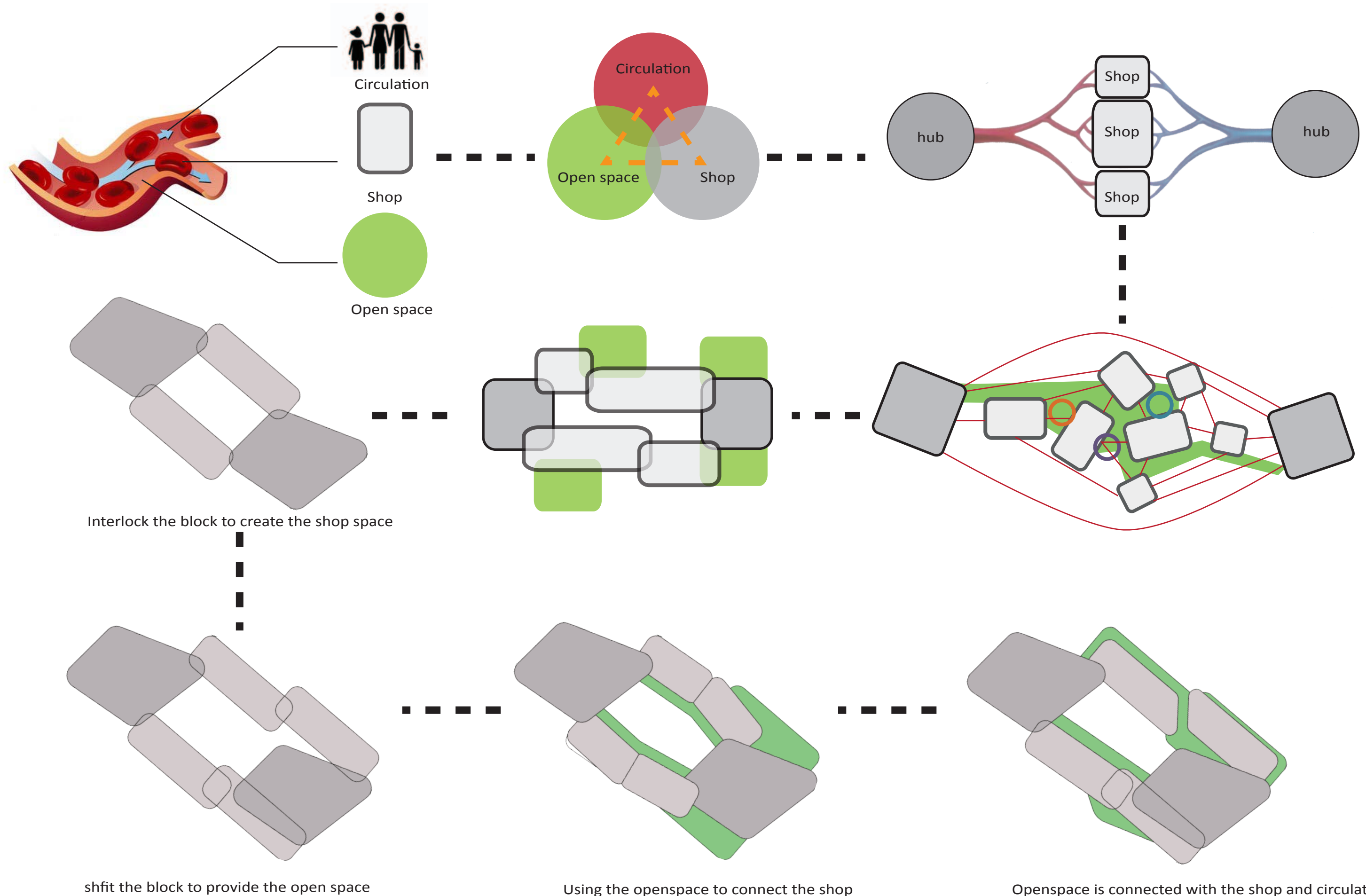
The intimate scale of old fabric, the interesting facades, the original strong sense of neighborhood created from shop-house typology, the complexity in space from density, the profile and steps...those thing enable Sheung Wan like a living organism. It is living, changes, and grows with time.

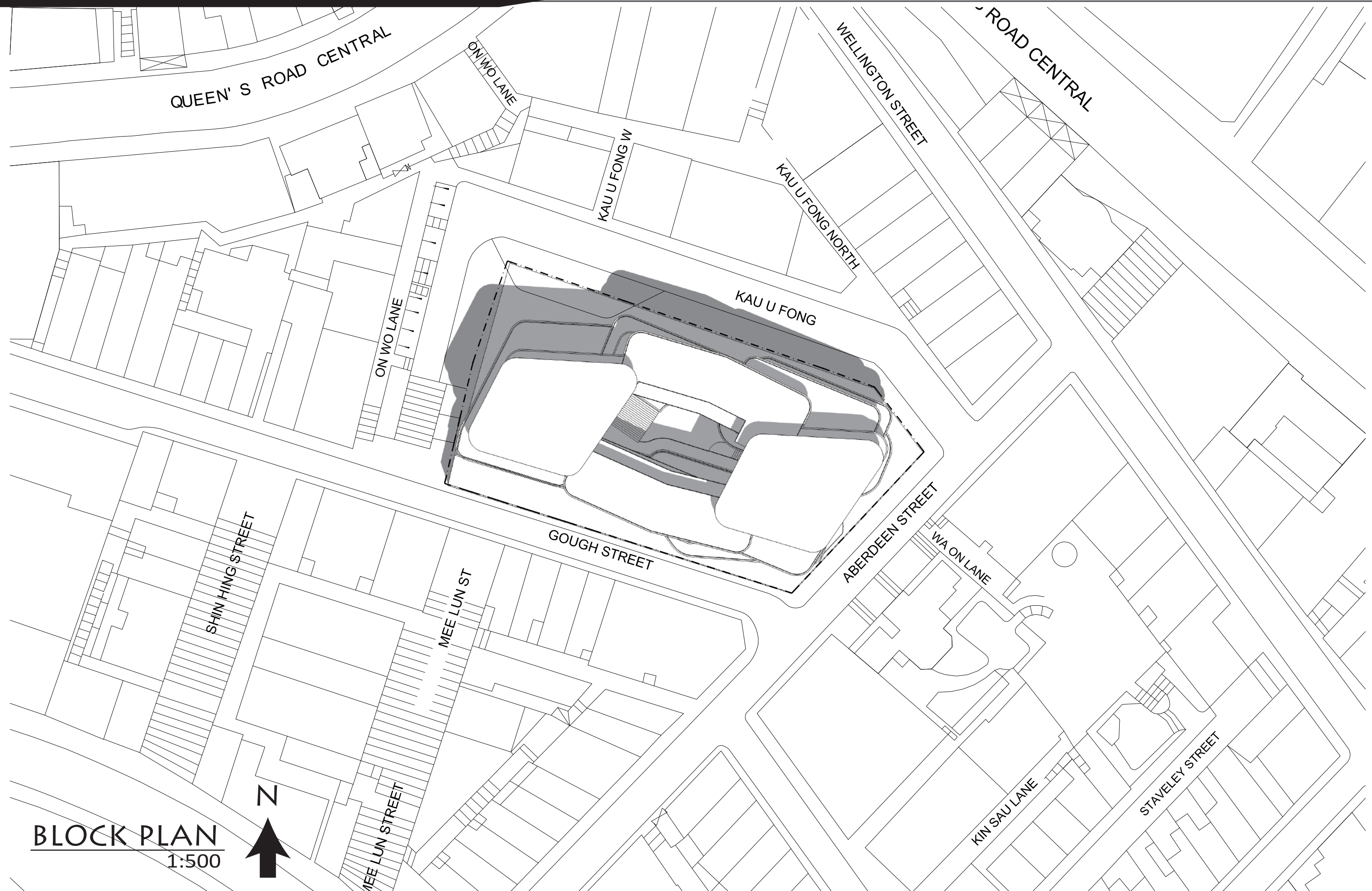
The design of shopping mall like a pulse to activate the district and keep it living. Bring the new energy, new experience, new life style to the district through the design.



- To be well connected with the inward circulation and outward circulation.
- To be easily accessible from internal shop to the external surrounded shops to create the shopping network and act as the pulse to activate the whole system of the district.

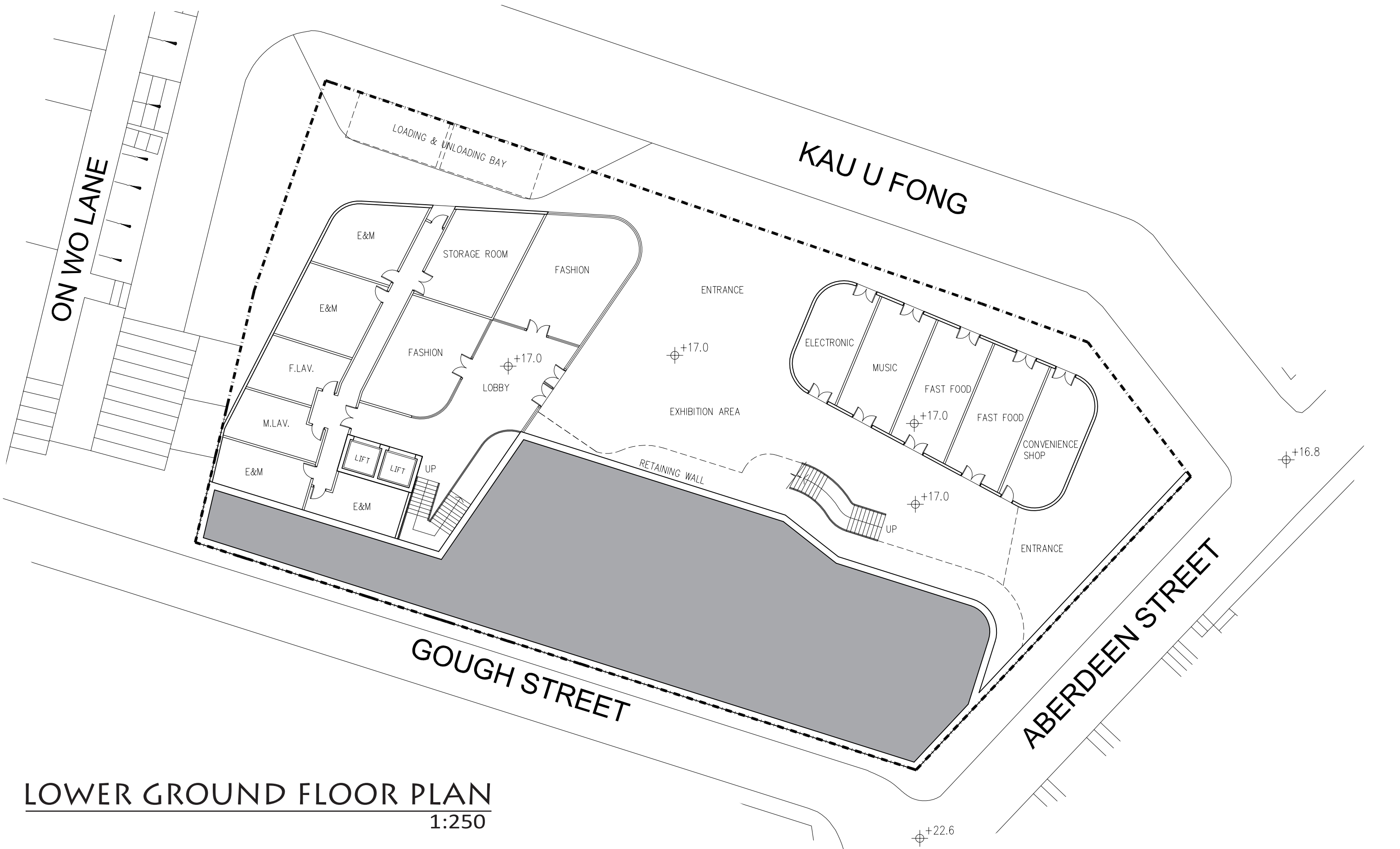
CIRCULATORY SYSTEM



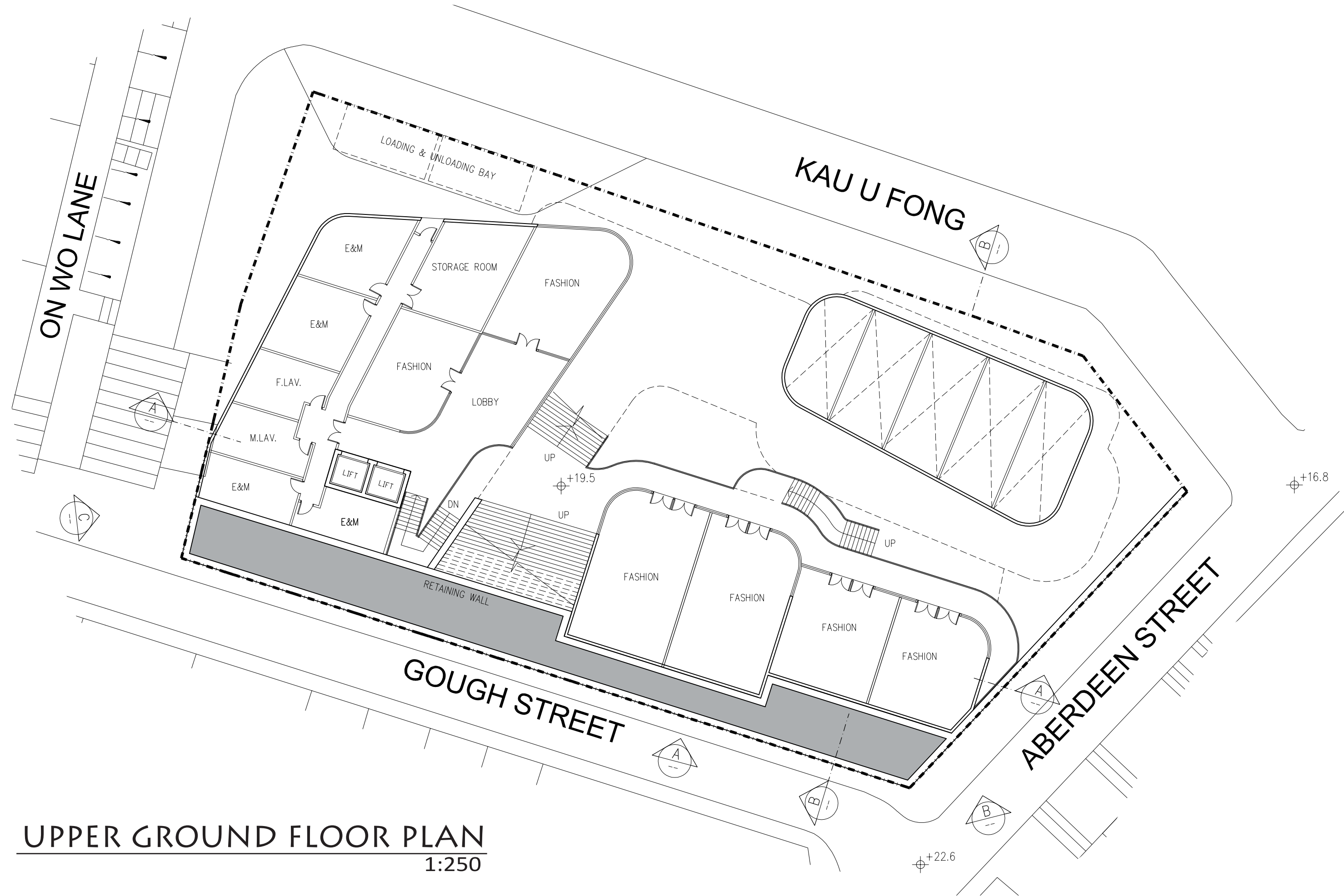


BLOCK PLAN
1:500

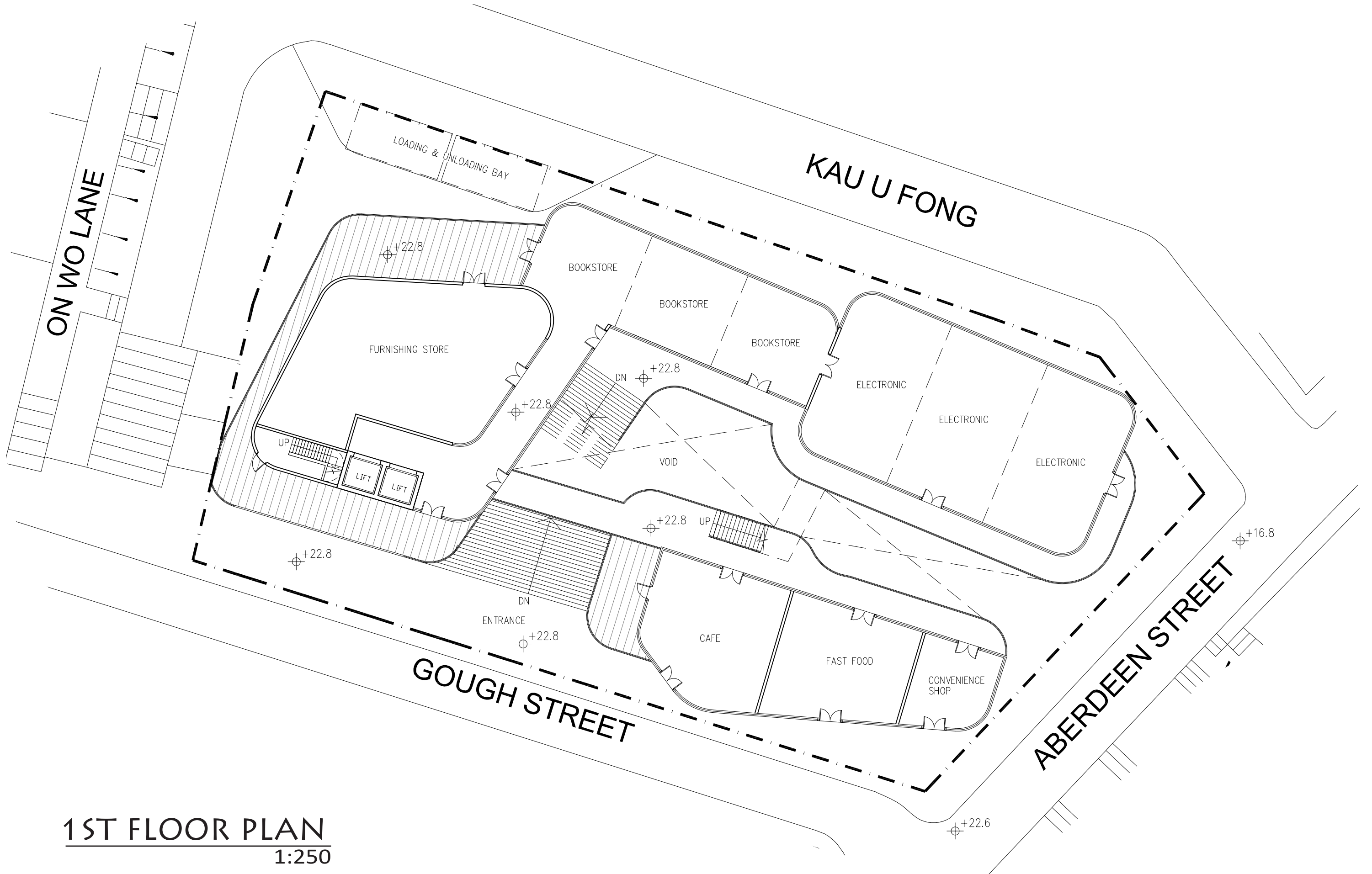




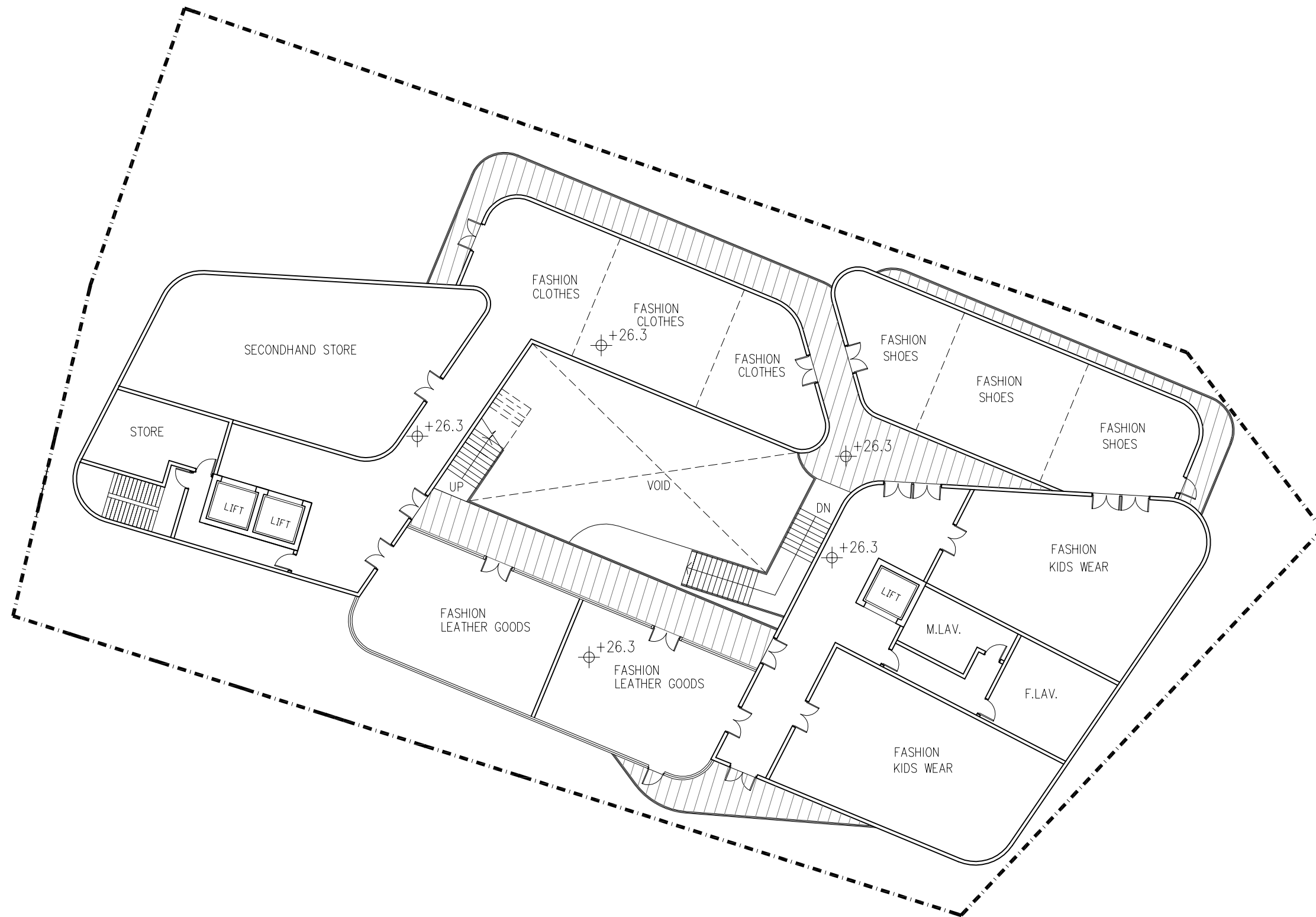
LOWER GROUND FLOOR PLAN
1:250



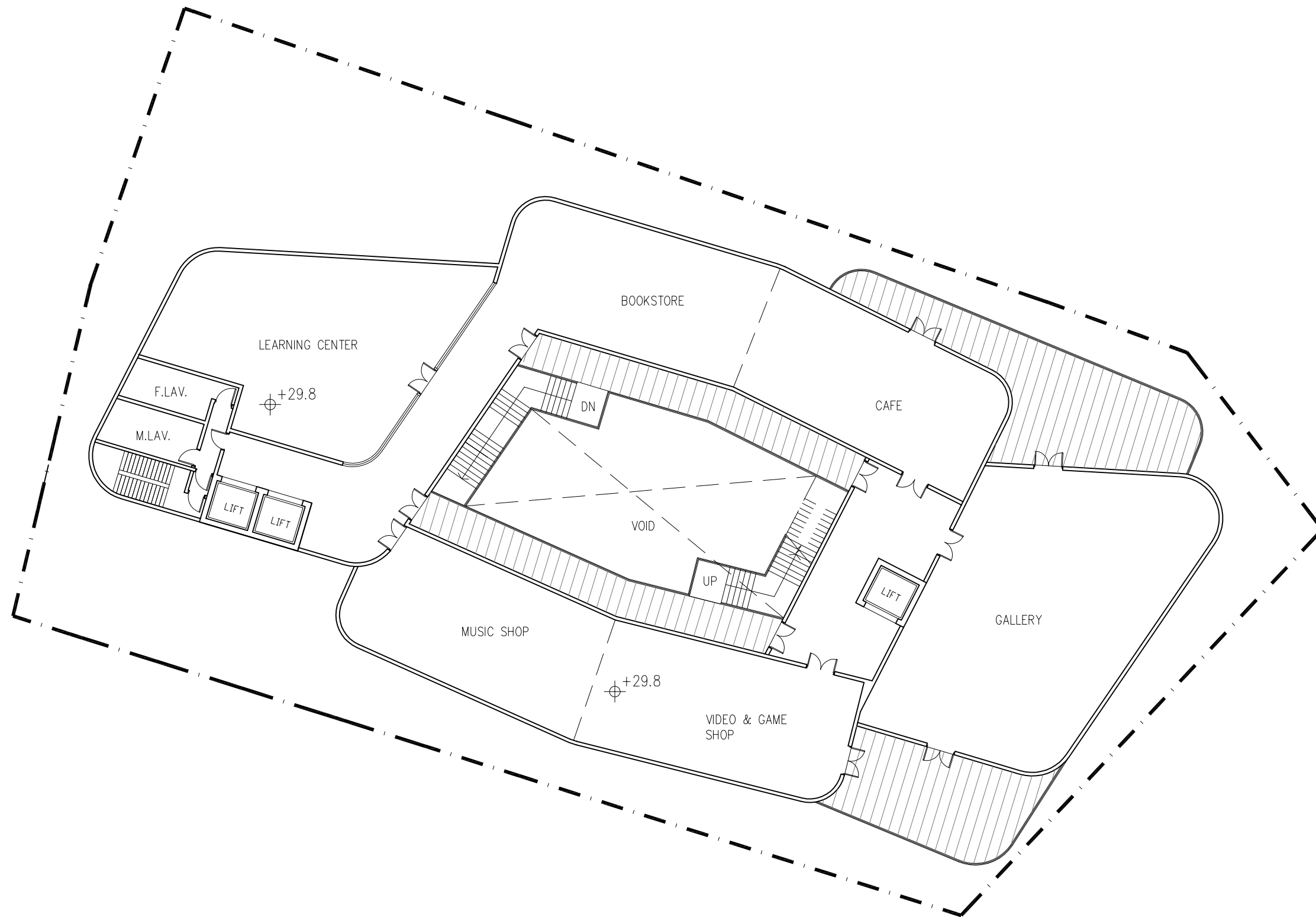
UPPER GROUND FLOOR PLAN
1:250



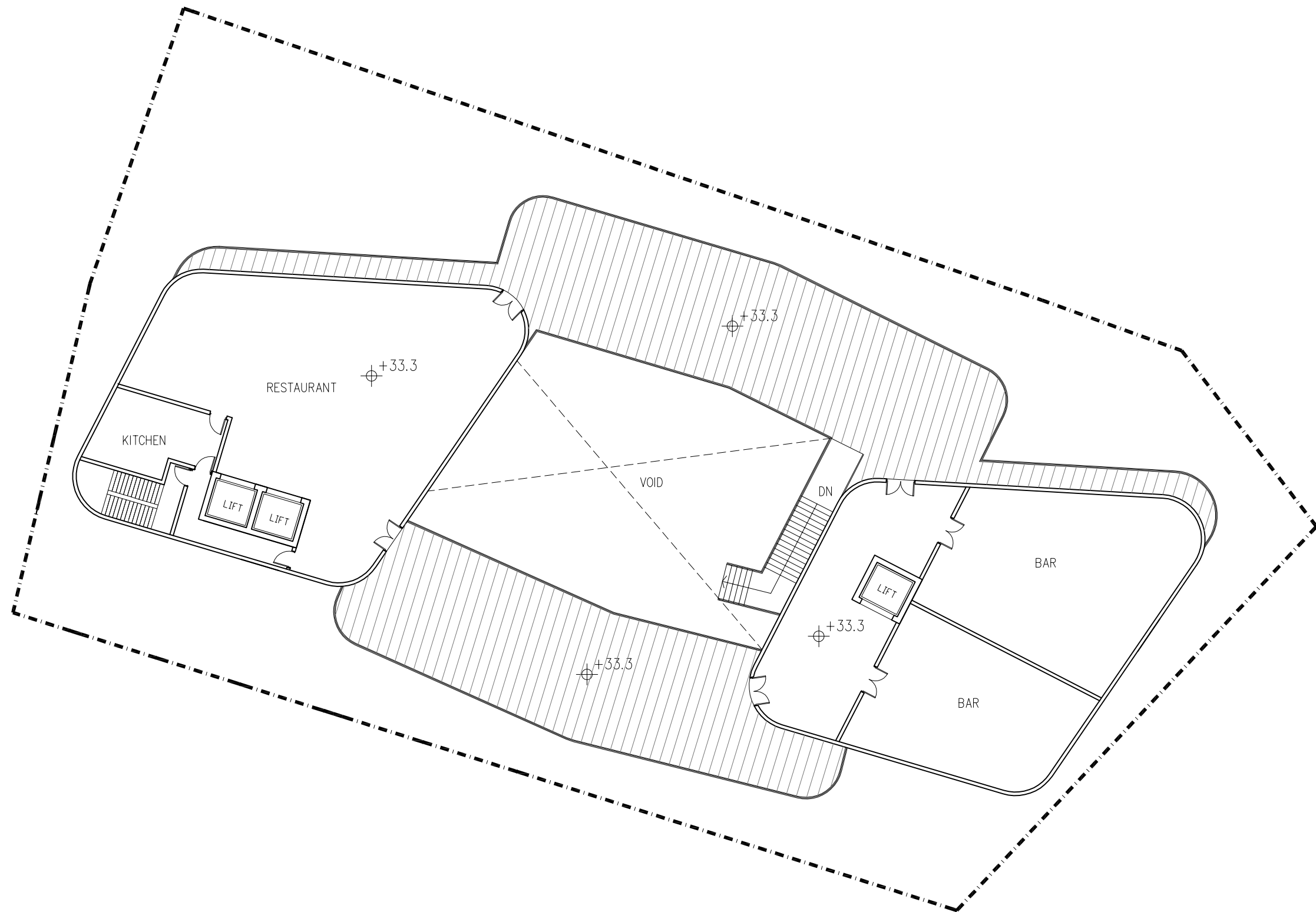
1ST FLOOR PLAN
1:250



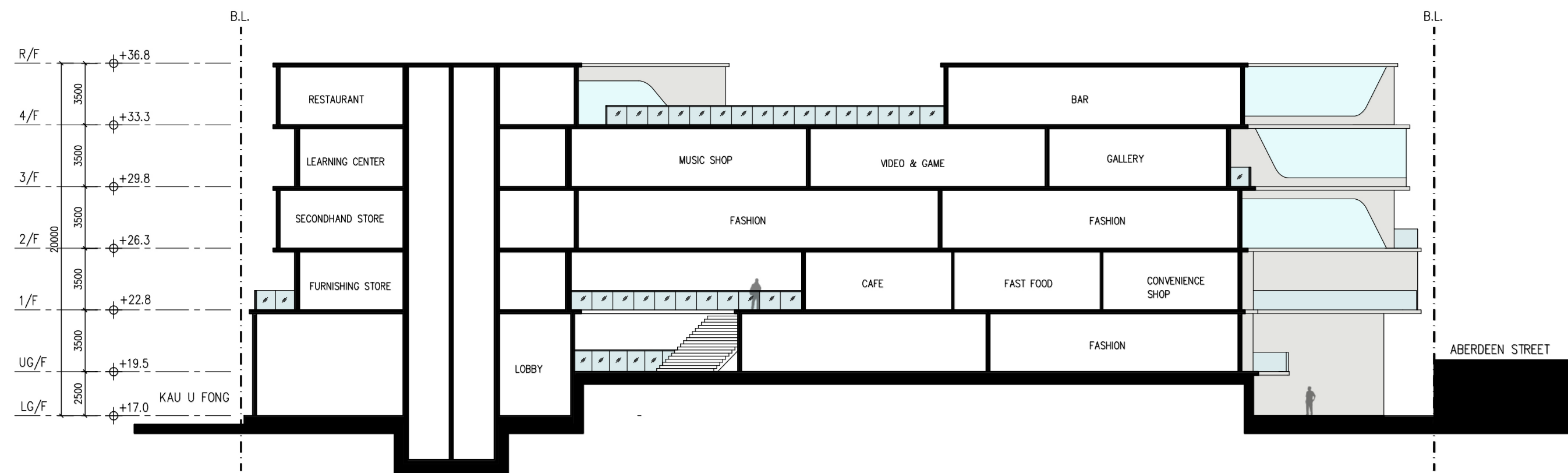
2ND FLOOR PLAN
1:250



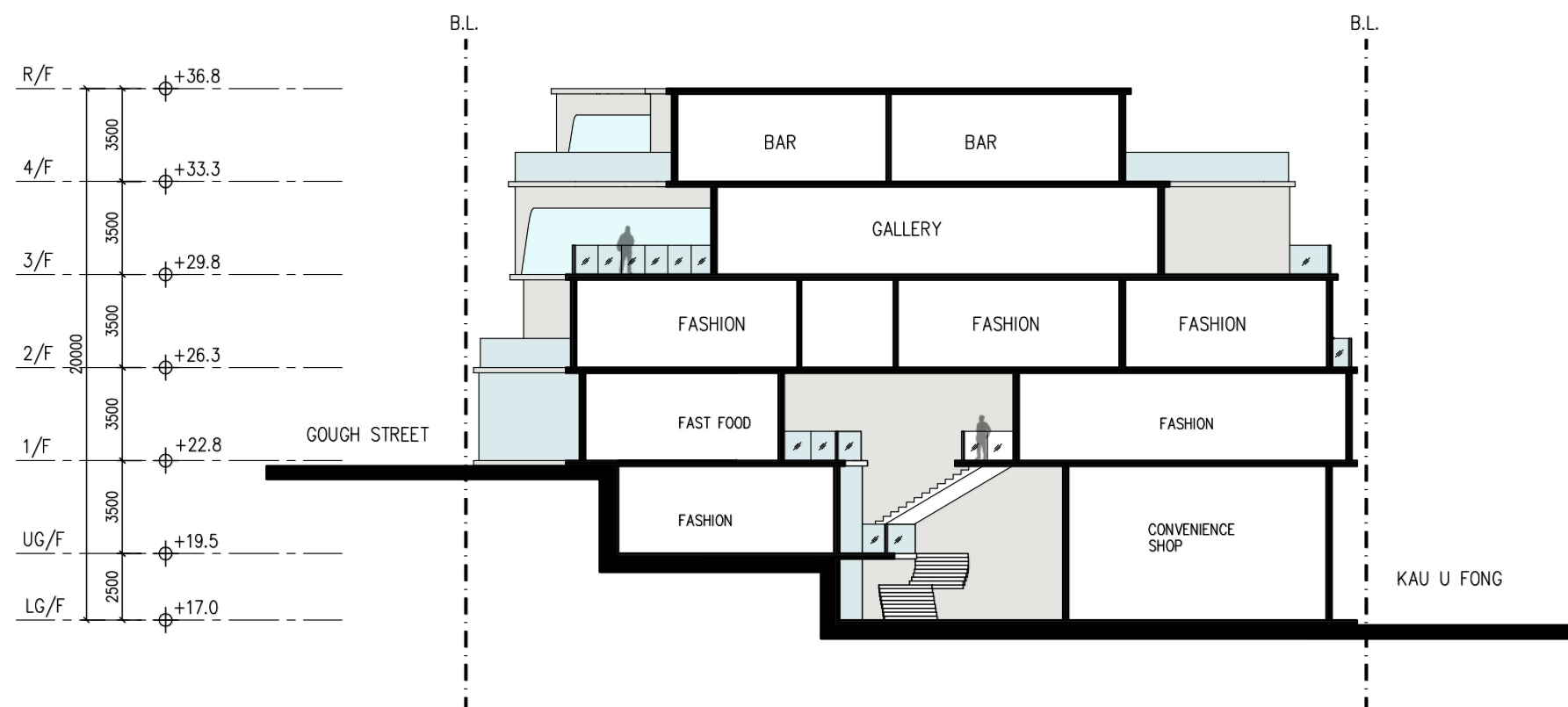
3RD FLOOR PLAN
1:250



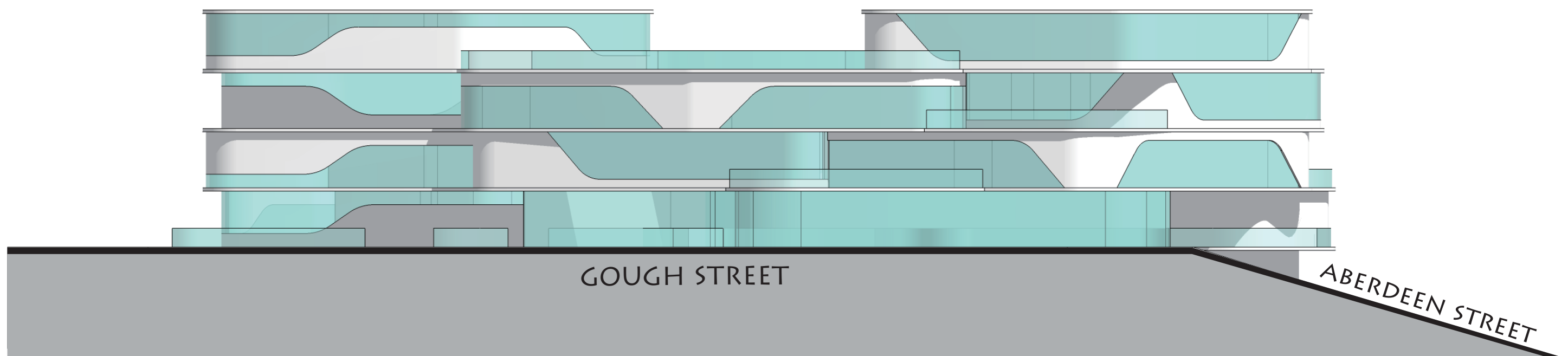
4TH FLOOR PLAN
1:250



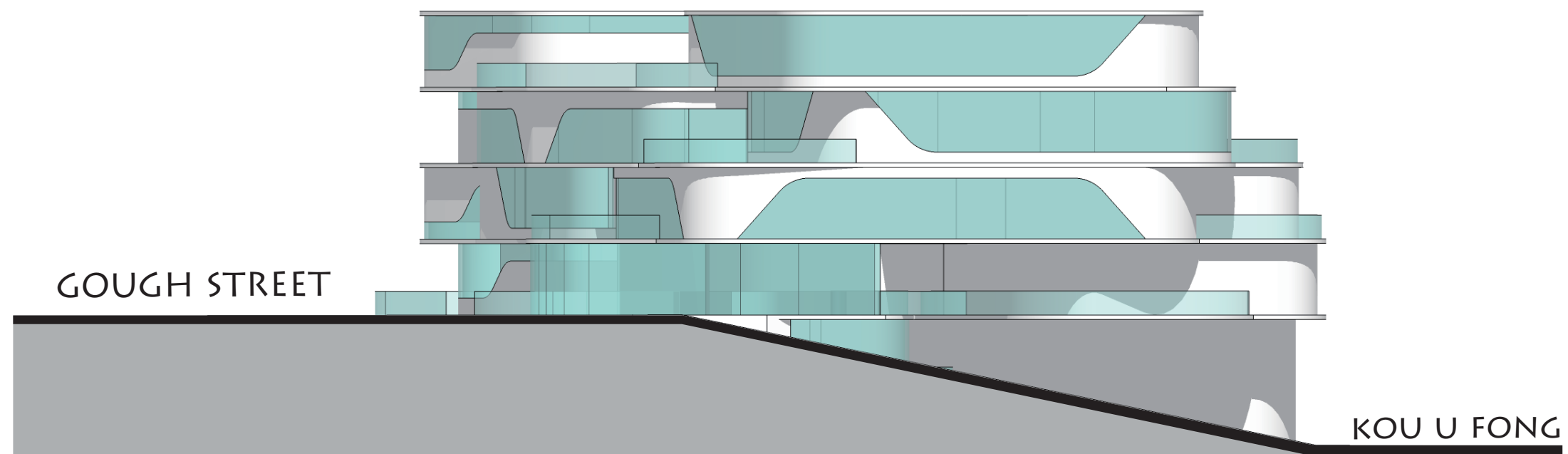
SECTION A



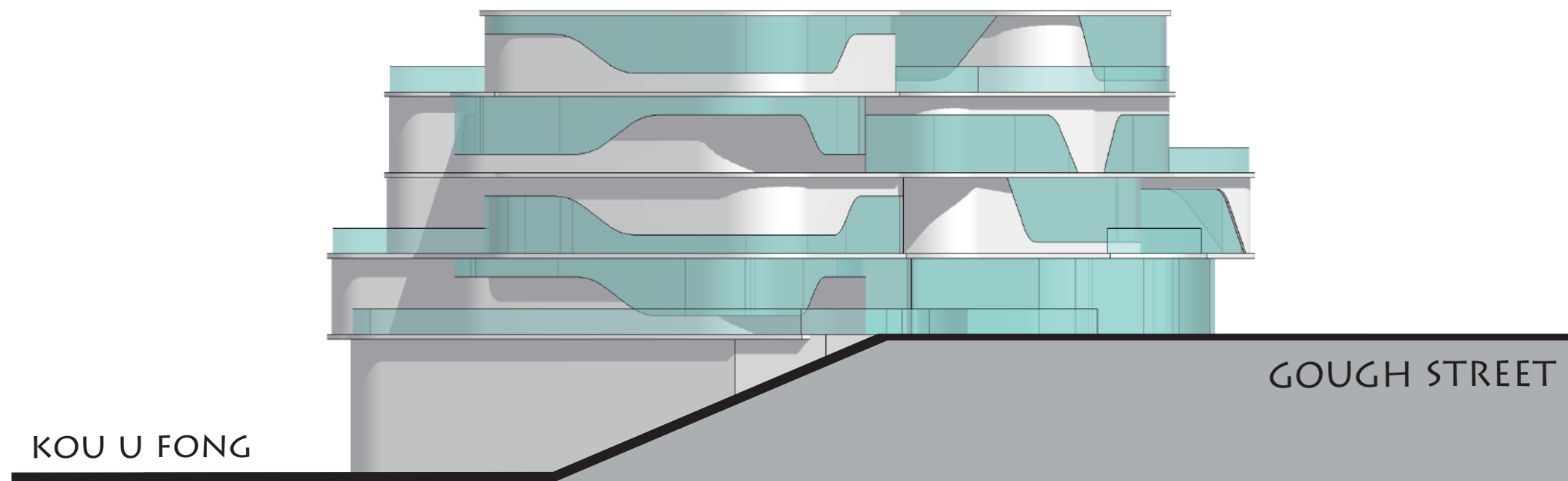
SECTION B



ELEVATION A



ELEVATION B



ELEVATION C

