



by ho ka yee, mandy

生 活 小 區
BIOTOPE
C I T Y

CONCEPT //

The design attempts to represent Sheung Wan, a macro-area with a system evolved through a set of social, economical, environmental, historical and cultural values.



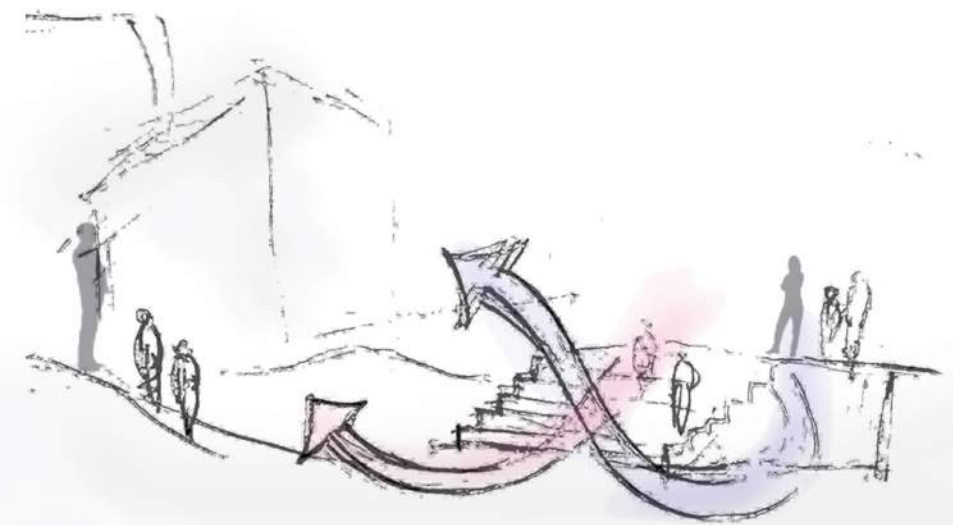
1.the form should suggest the macro-area system concept.



2. By folding the model, sloping surface are created, imitating the characteristic of Sheung Wan.



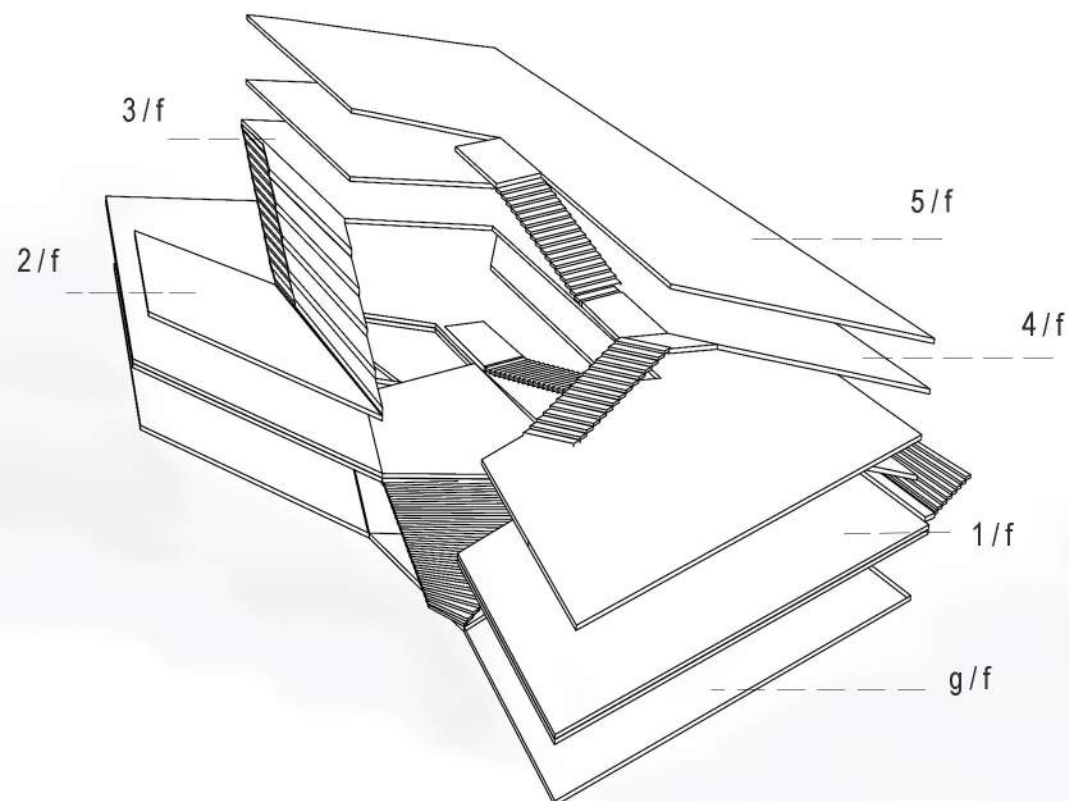
3. Outdoor stairs are as the main circulation, the space below the stairs can also be circulation space.



生活小區
BIOTOPE
CITY

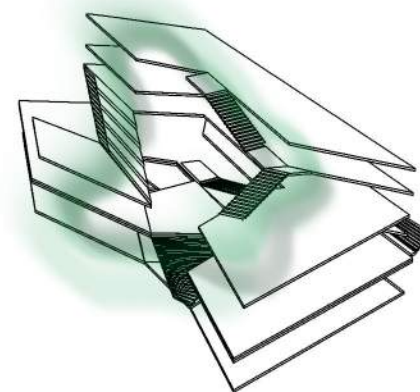
/ˈbaɪəˌtəʊp/
noun

1.(ecology) a small area, such as the bark of a tree, that supports its own distinctive community

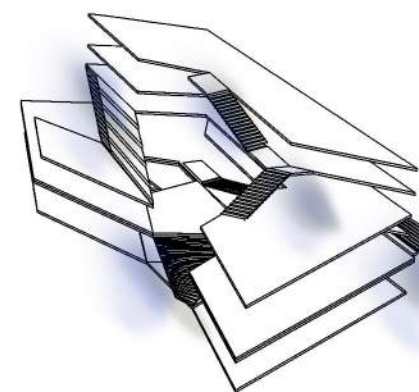


CIRCULATION //

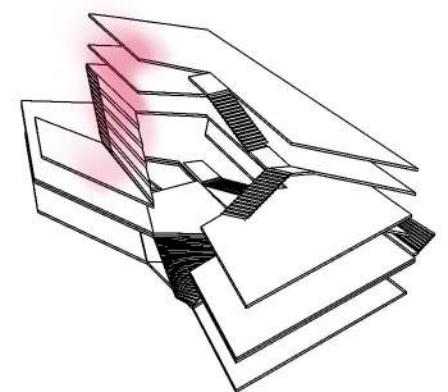
Main vertical circulation is by outdoor staircases, which surrounds the central 24hrs open space and the historical tree in the central courtyard.



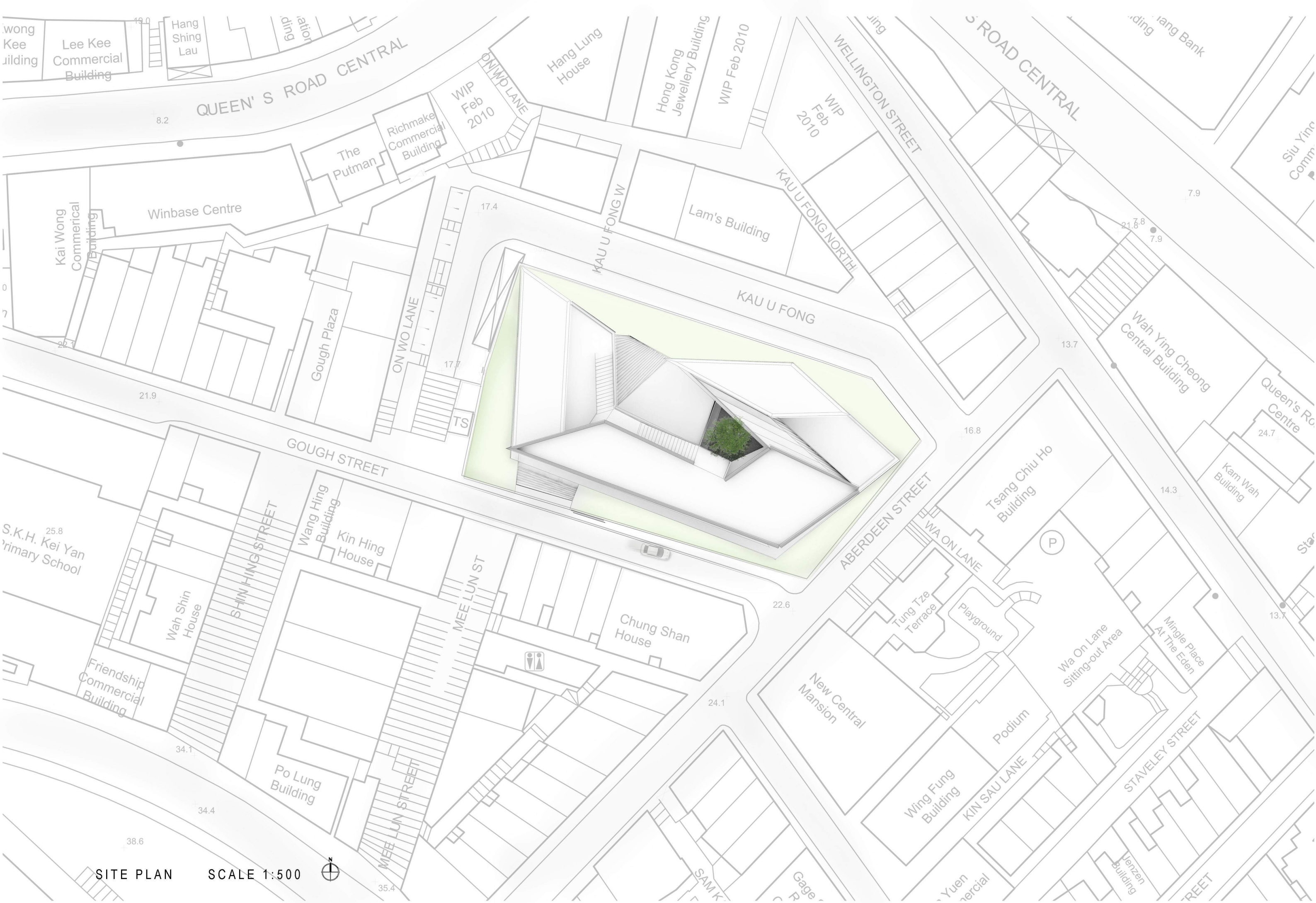
1. stairs are located according to the central open space



2. space below stair as circulation space



3. stairs as seating area



SITE PLAN

SCALE 1:500



ABERDEEN STREET

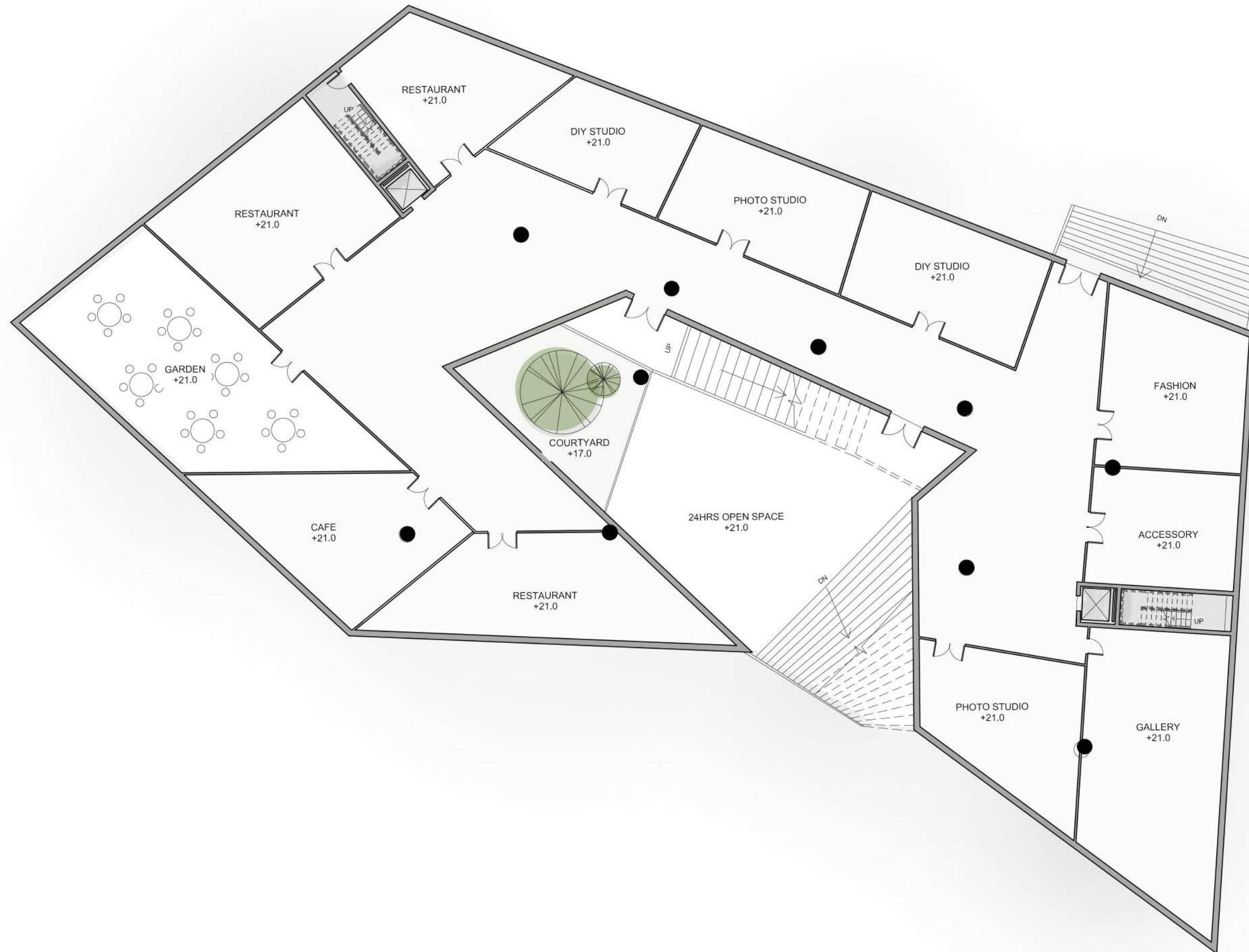


KAU U FONG

G/F PLAN

SCALE 1:200

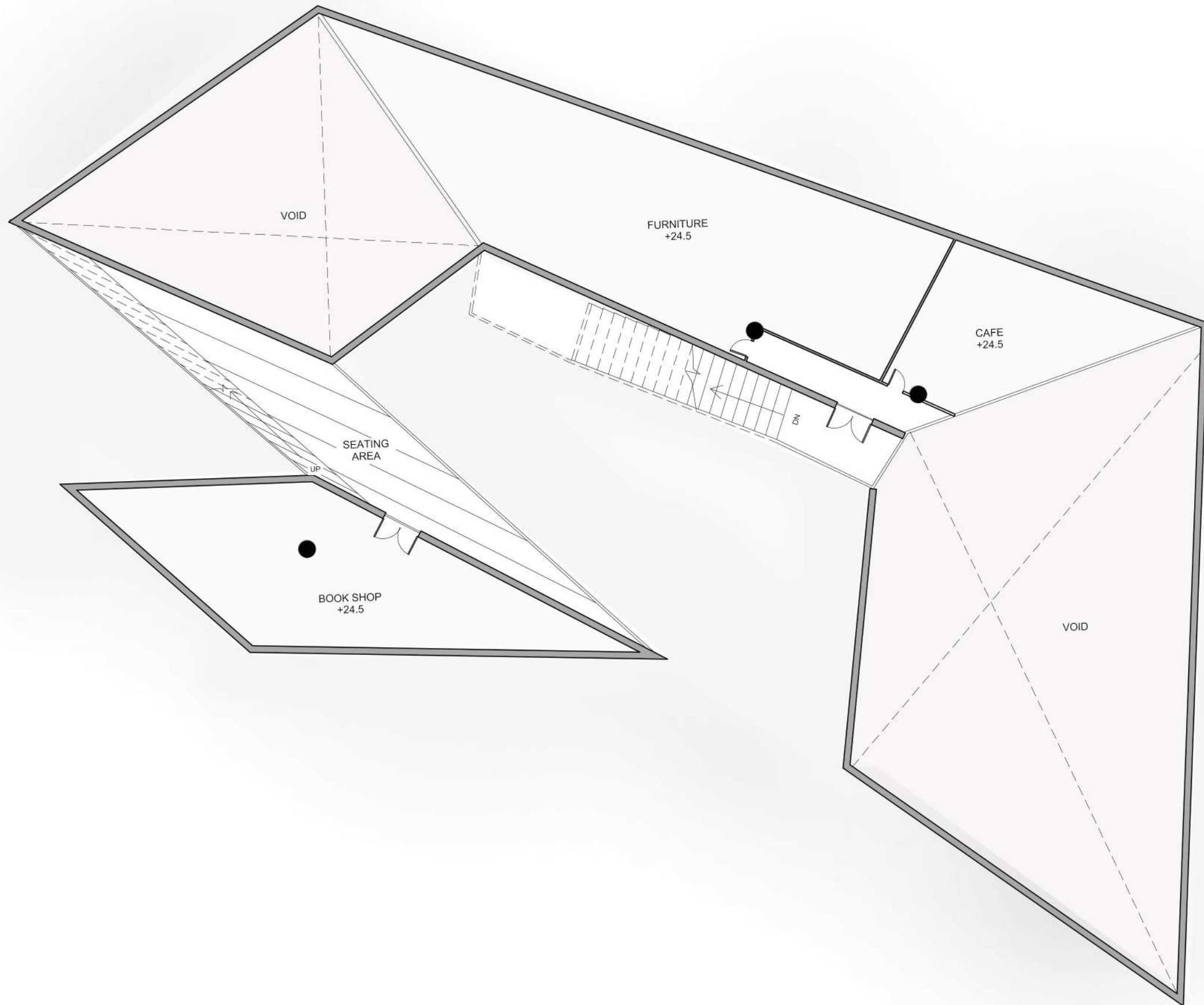




1/F PLAN

SCALE 1:200

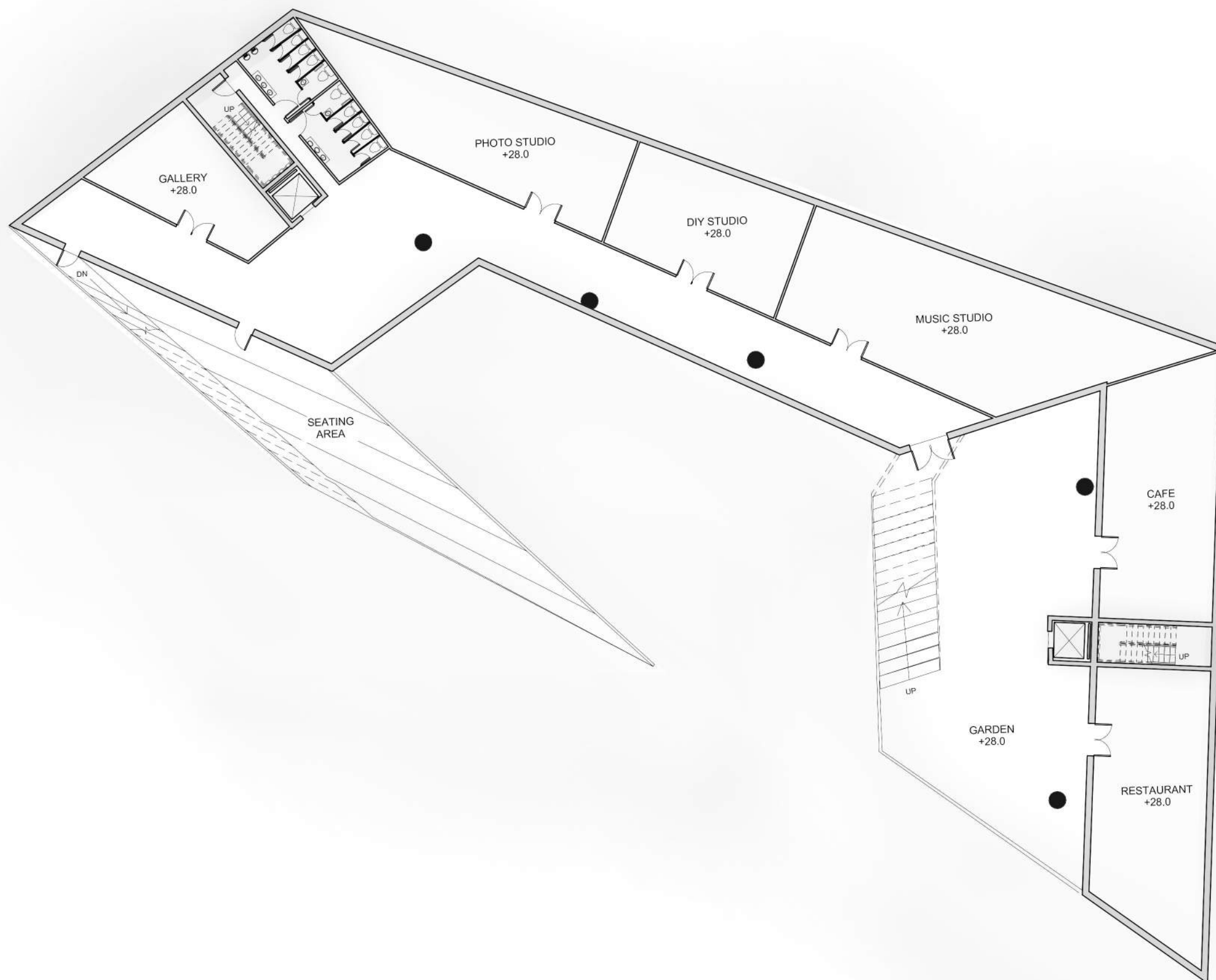




2/F PLAN

SCALE 1:200

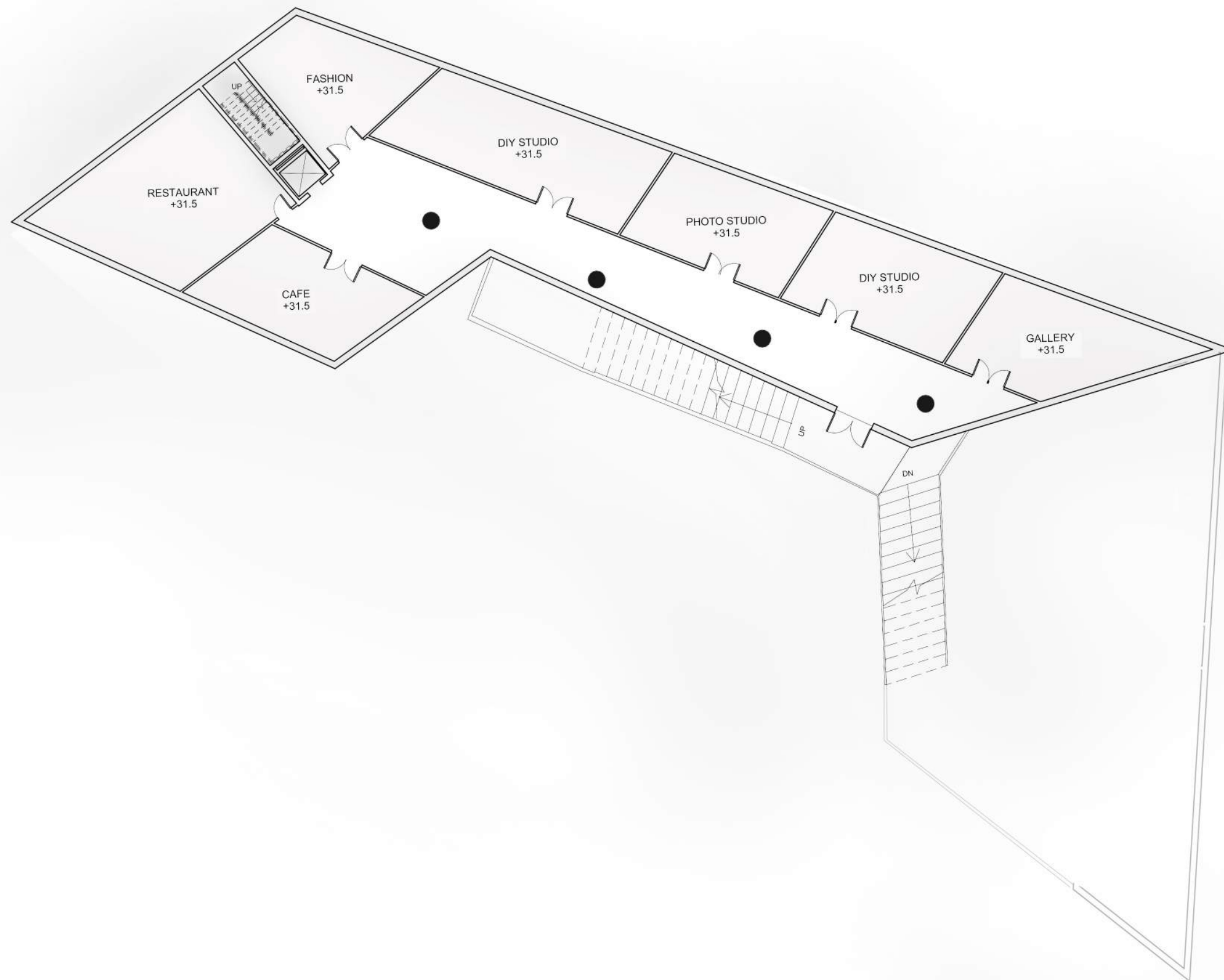


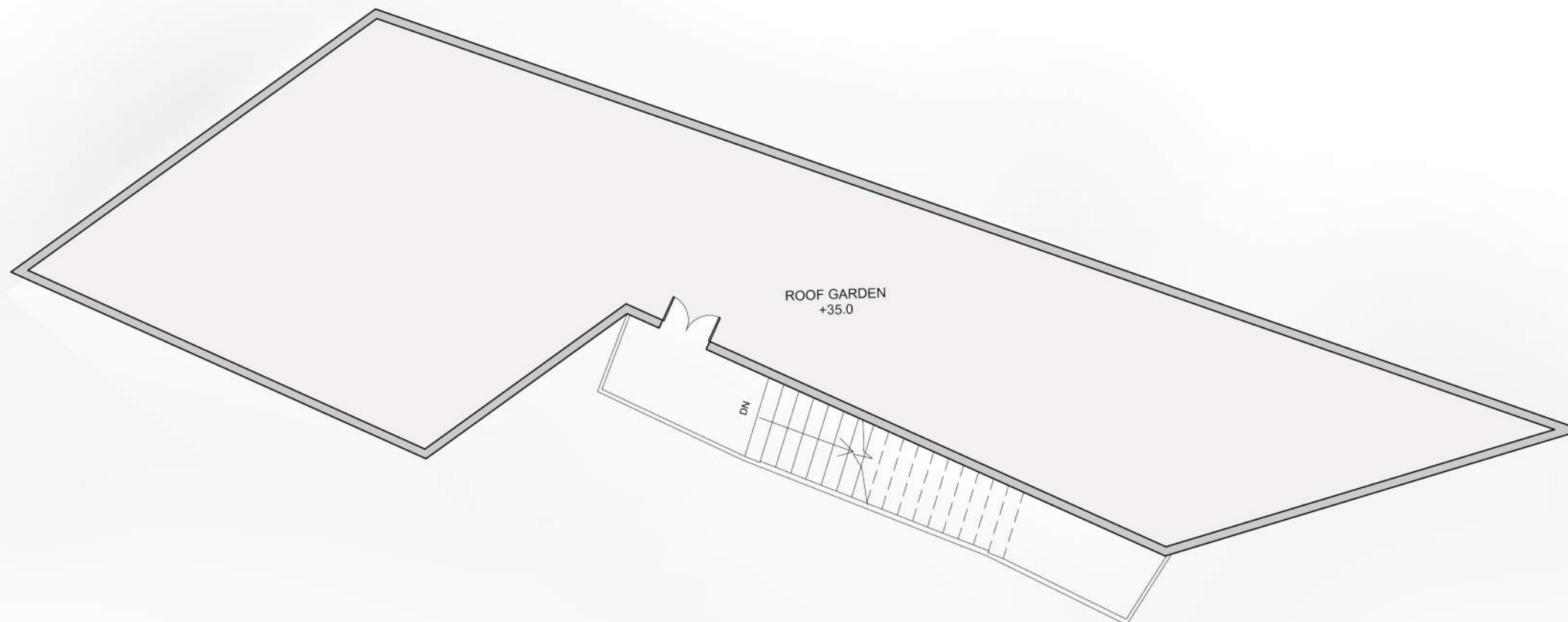


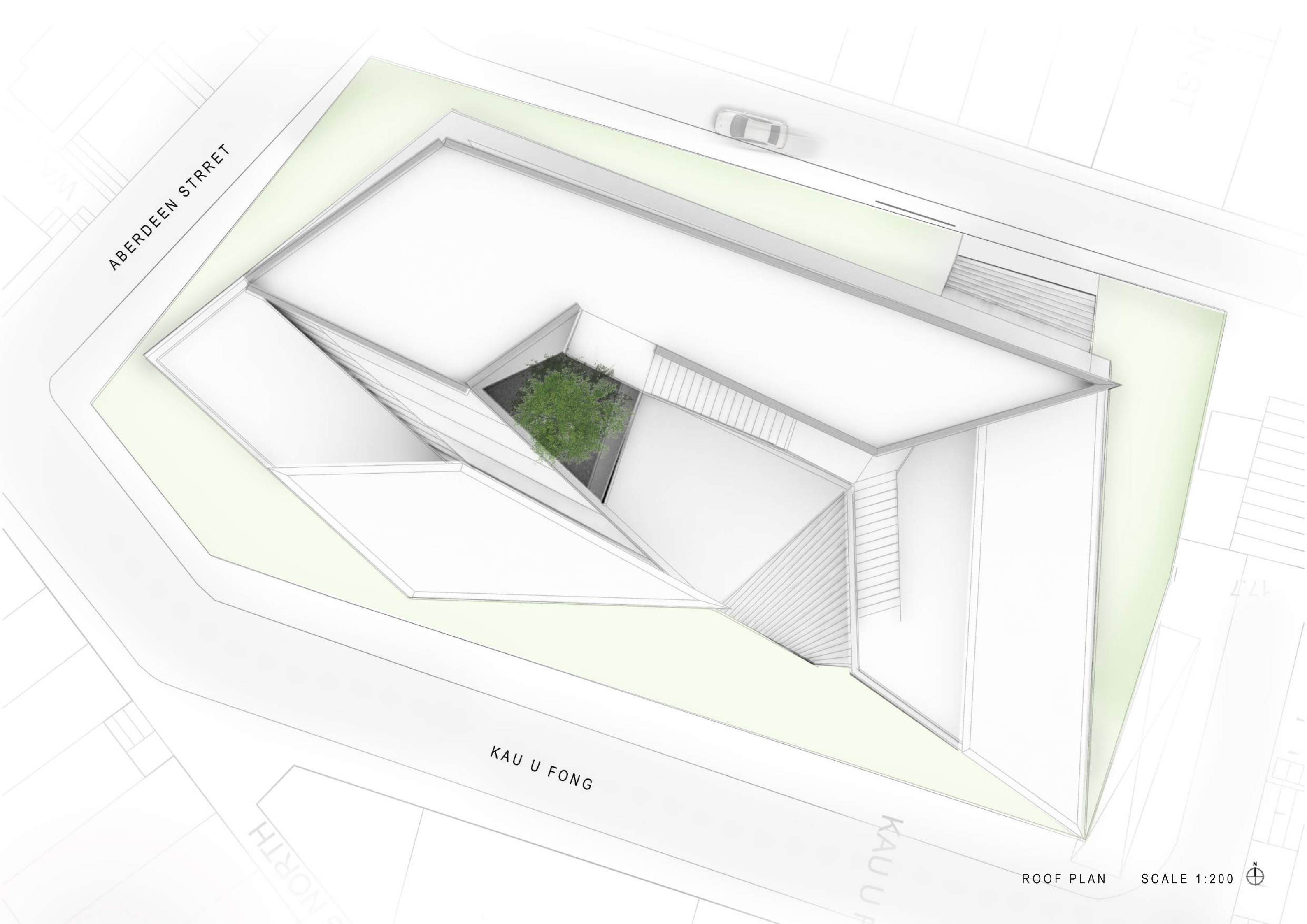
3/F PLAN

SCALE 1:200









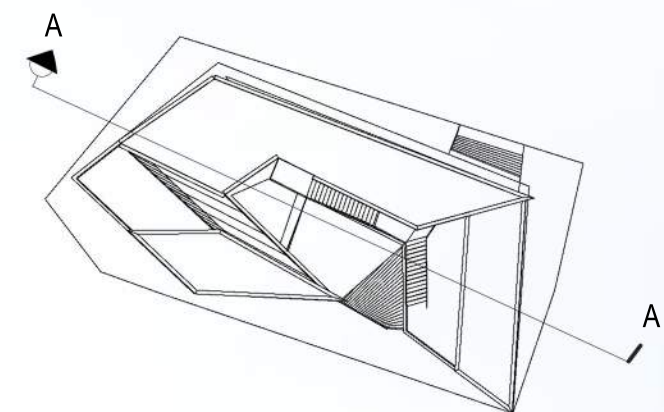
ABERDEEN STREET

KAU U FONG

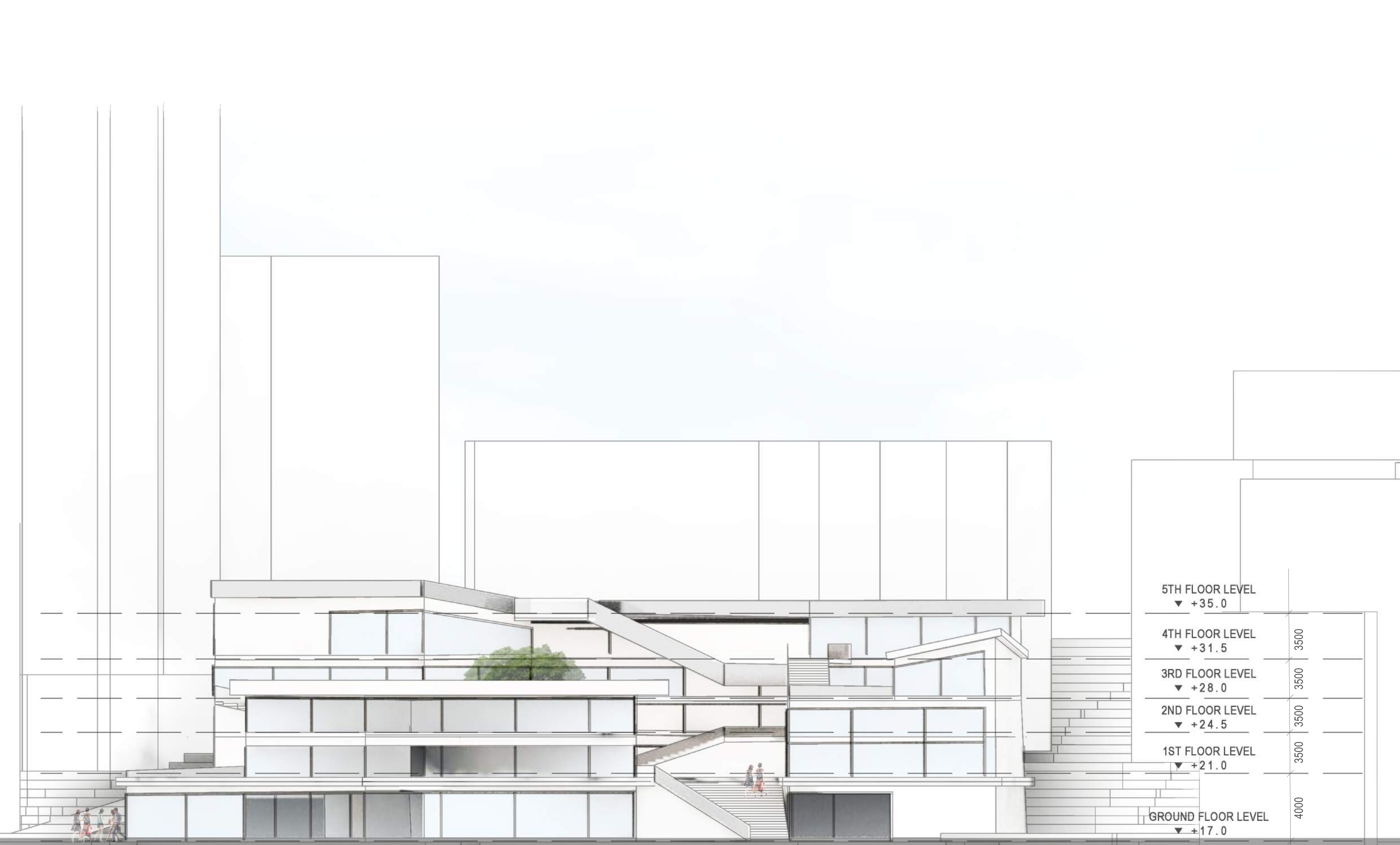
ROOF PLAN

SCALE 1:200

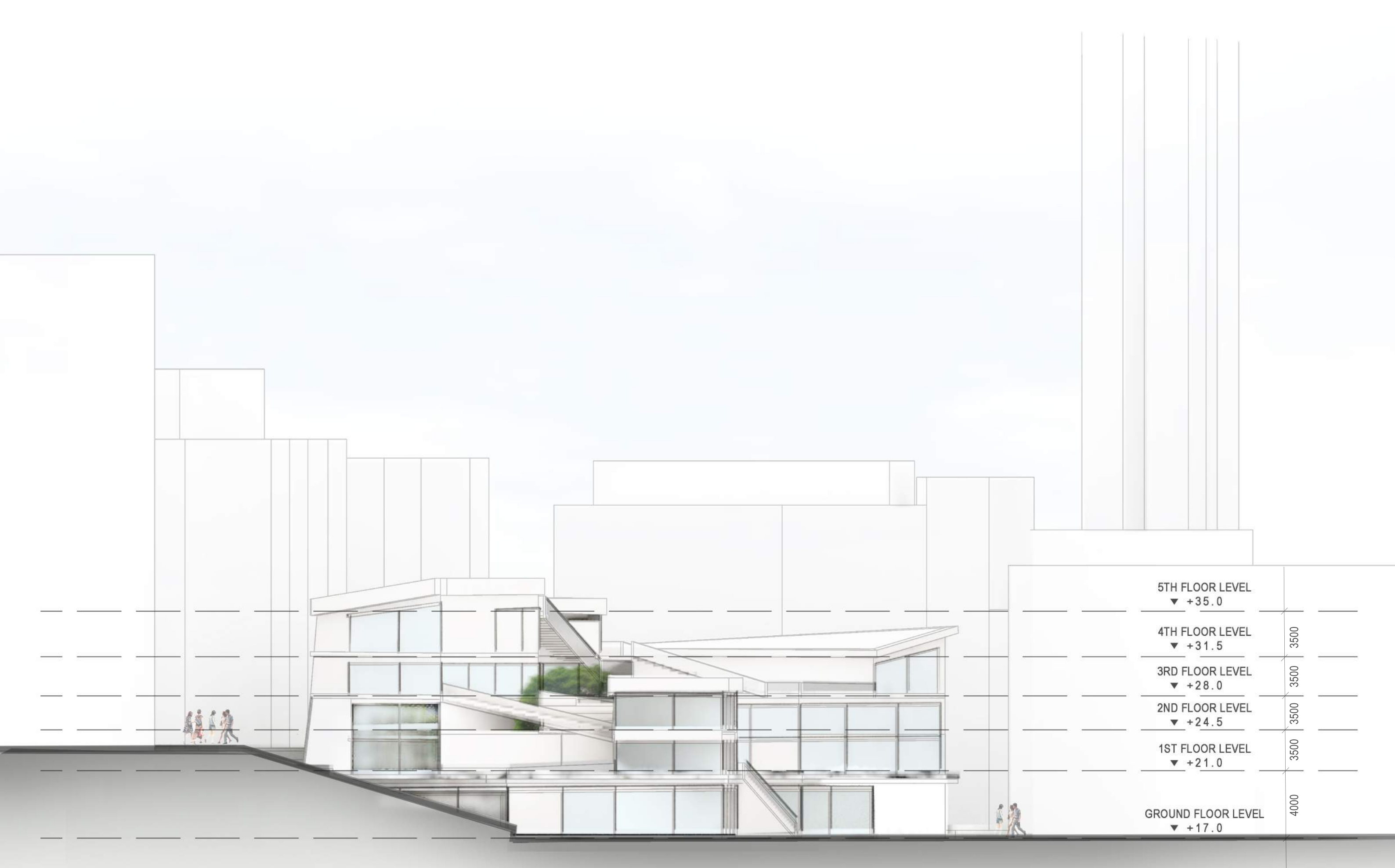




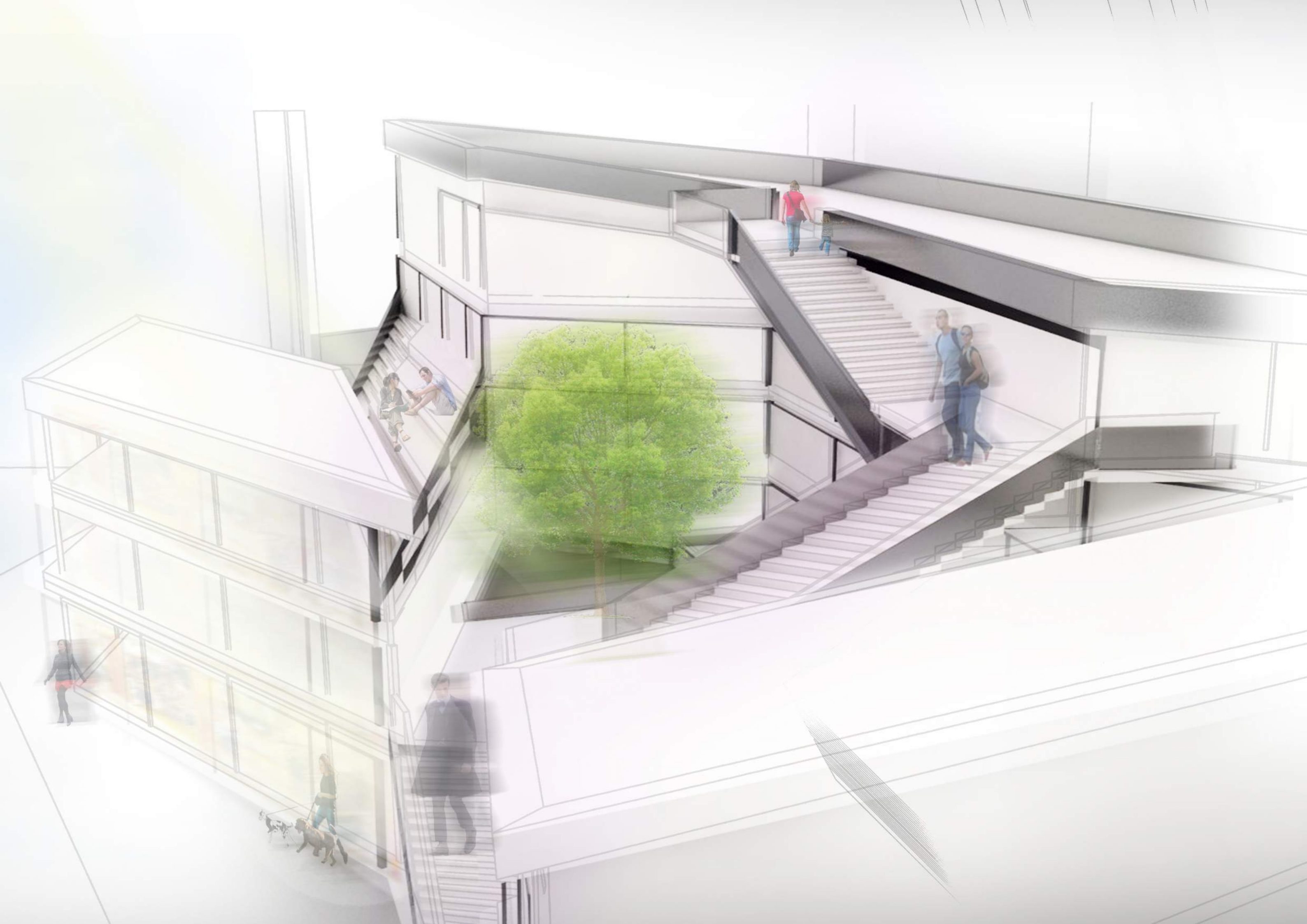
SECTION A-A' SCALE 1:200

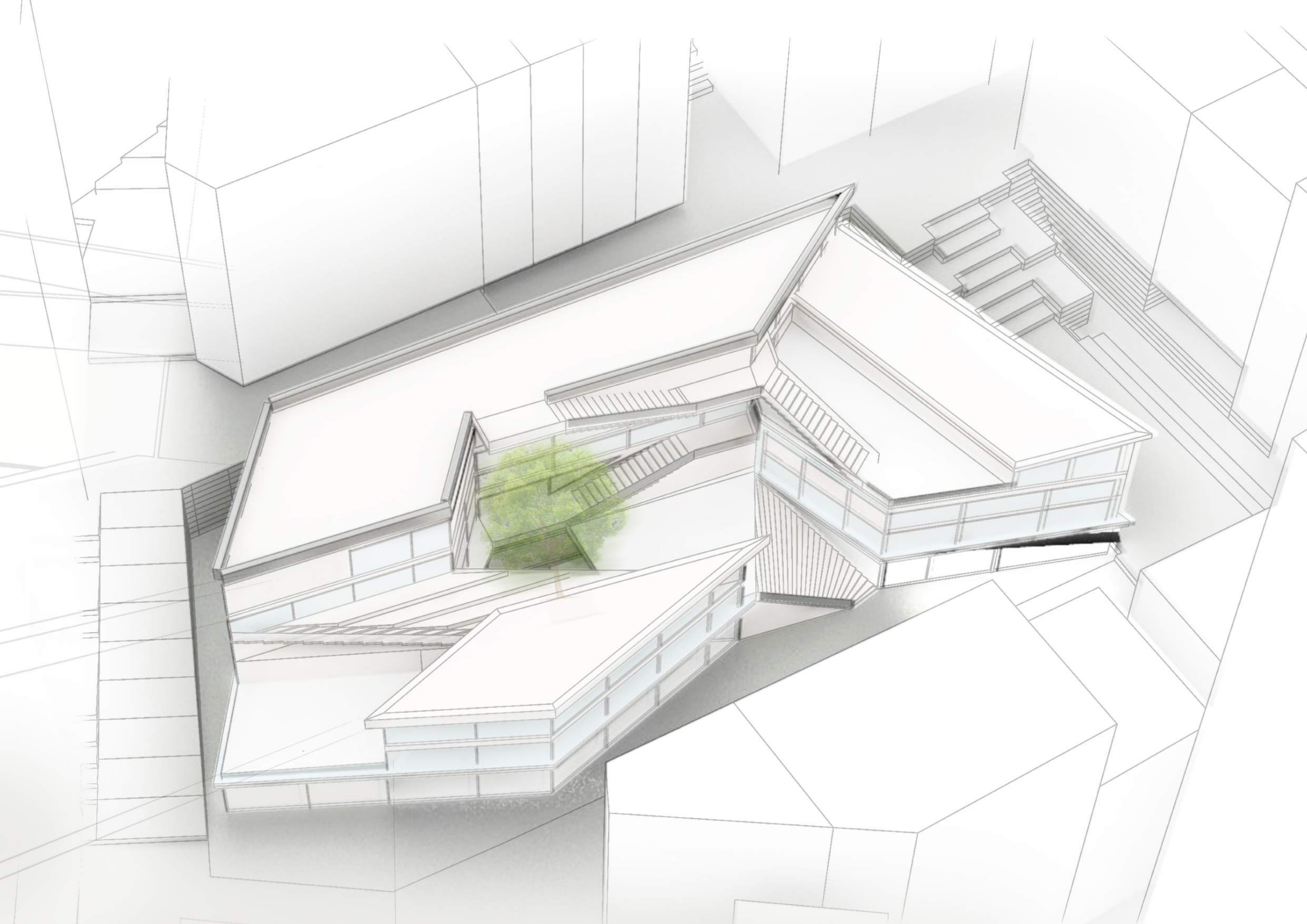


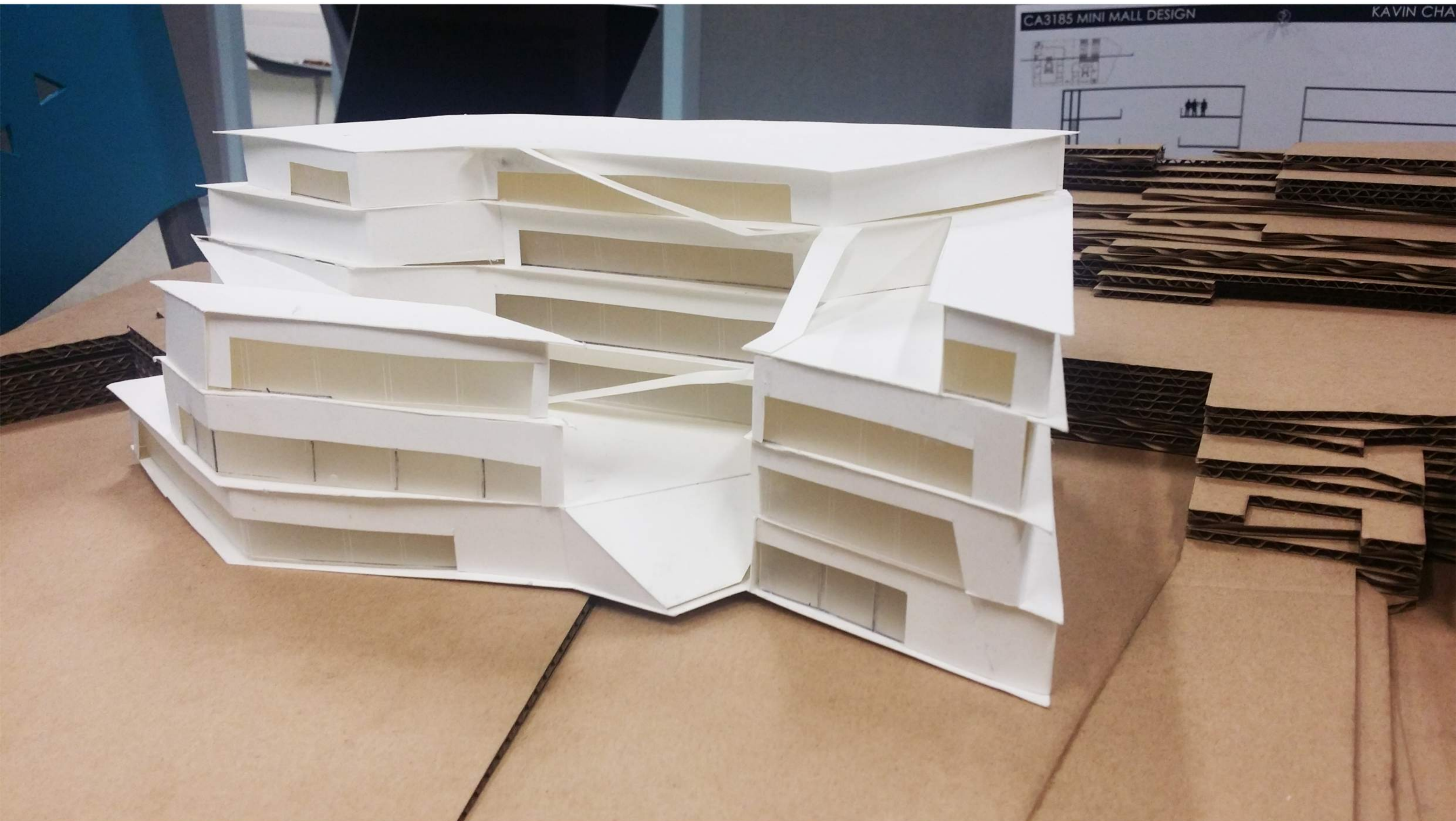
SOUTH ELEVATION SCALE 1:200



EAST ELEVATION SCALE 1:200



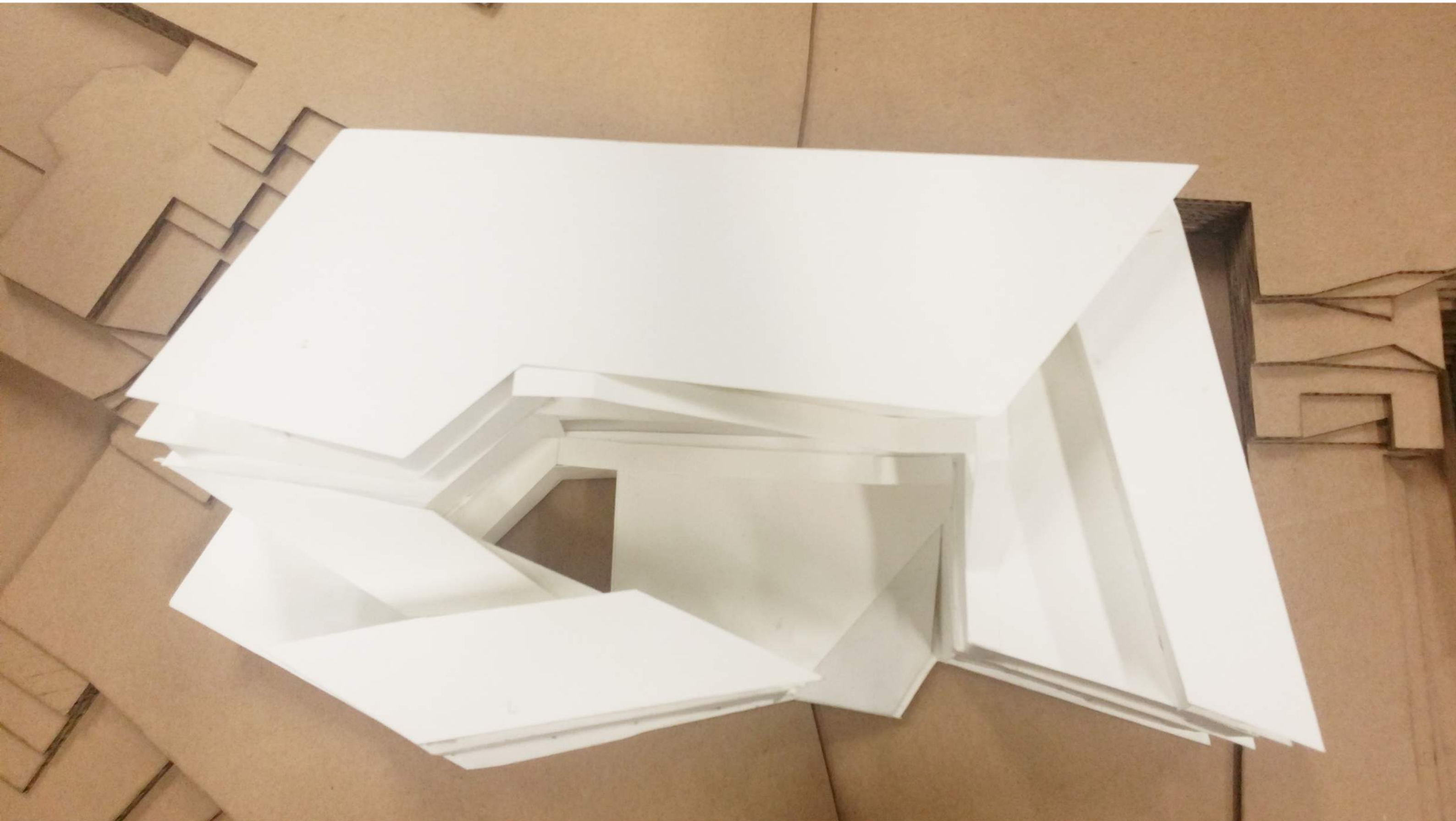




model photos



model photos



model photos

model photos

