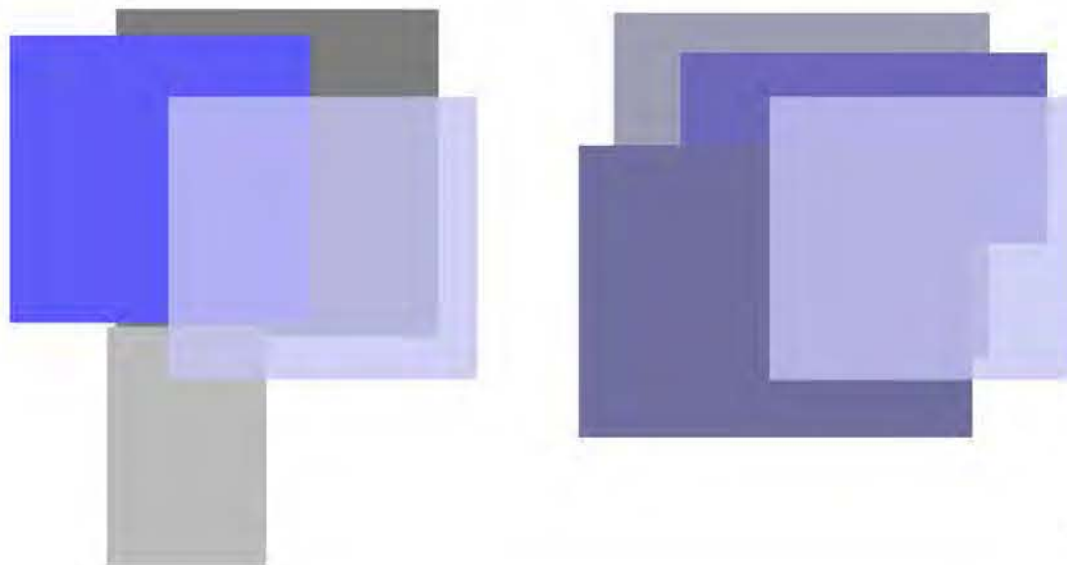
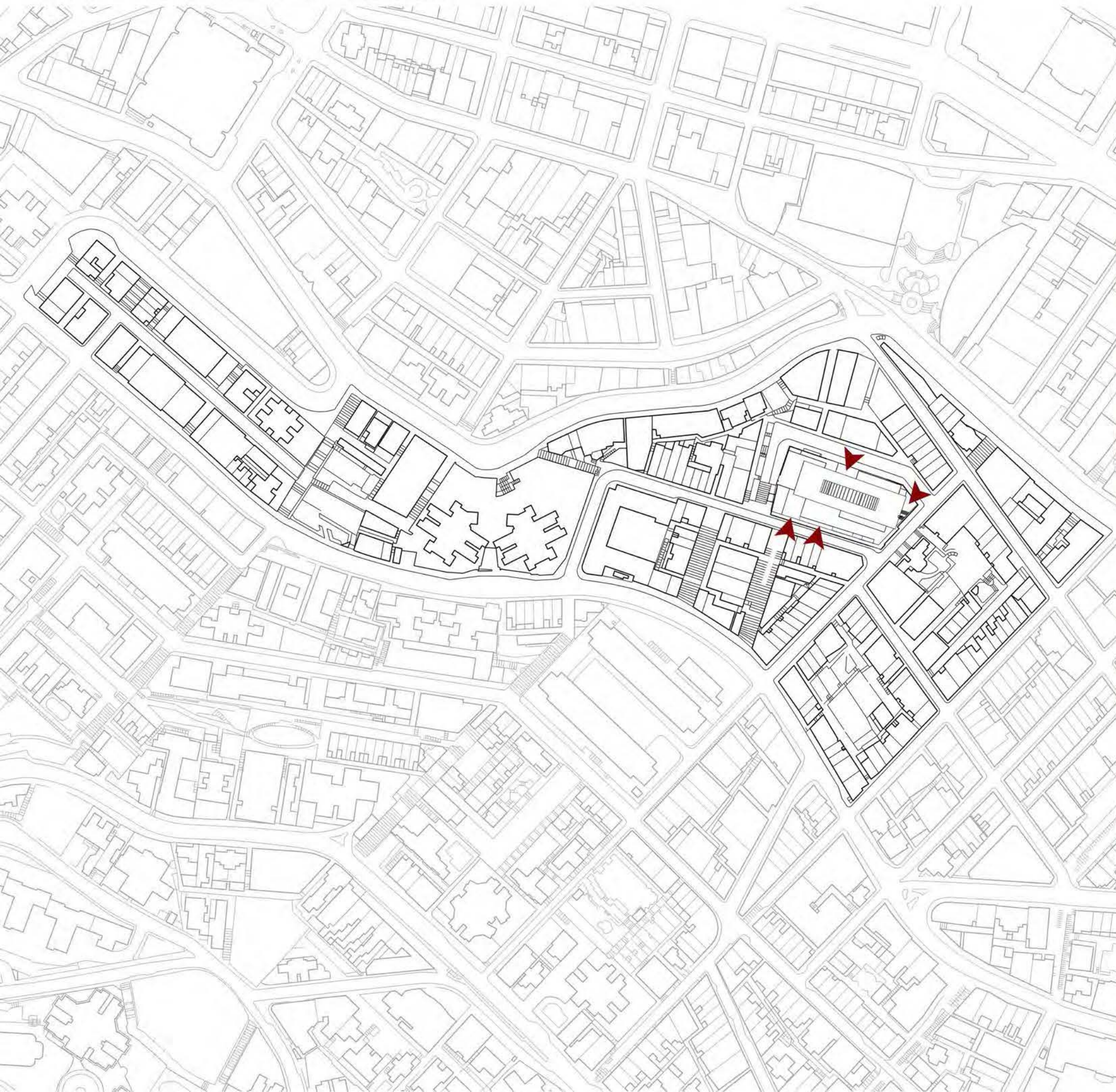


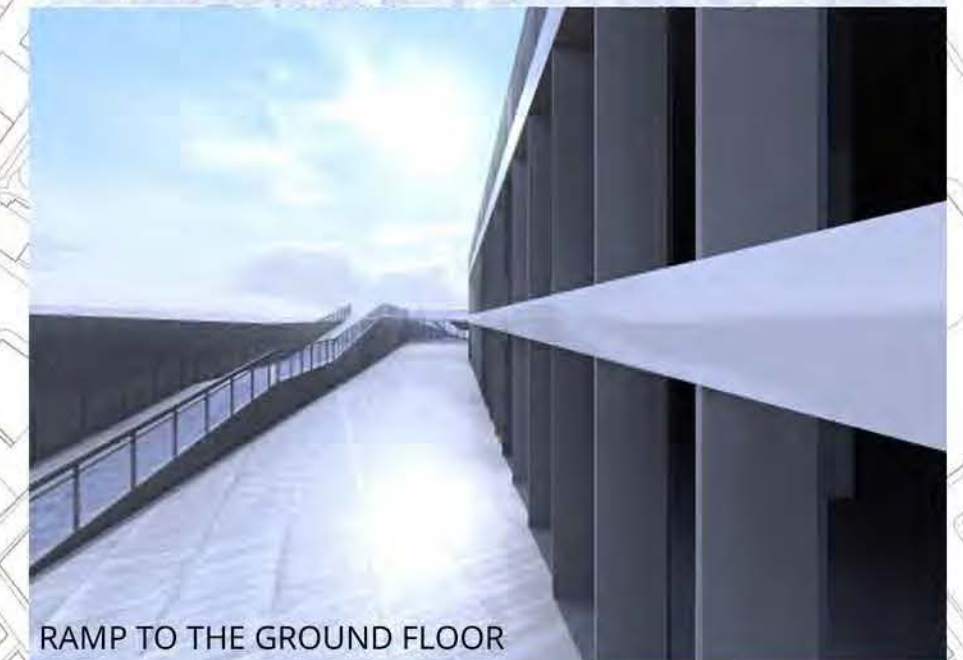
THE DESIGN USED LAYERING FOR THE OVERALL FORM.  
BLOCKS WITH SIMILAR SIZE ARE PLACED ON TOP OF EACH  
OTHER AS TO PROVIDE OPEN SPACE AND CONNECTION  
TO THE OUTDOOR.



SHIFT | DISPLACE | MULTI VOLUME



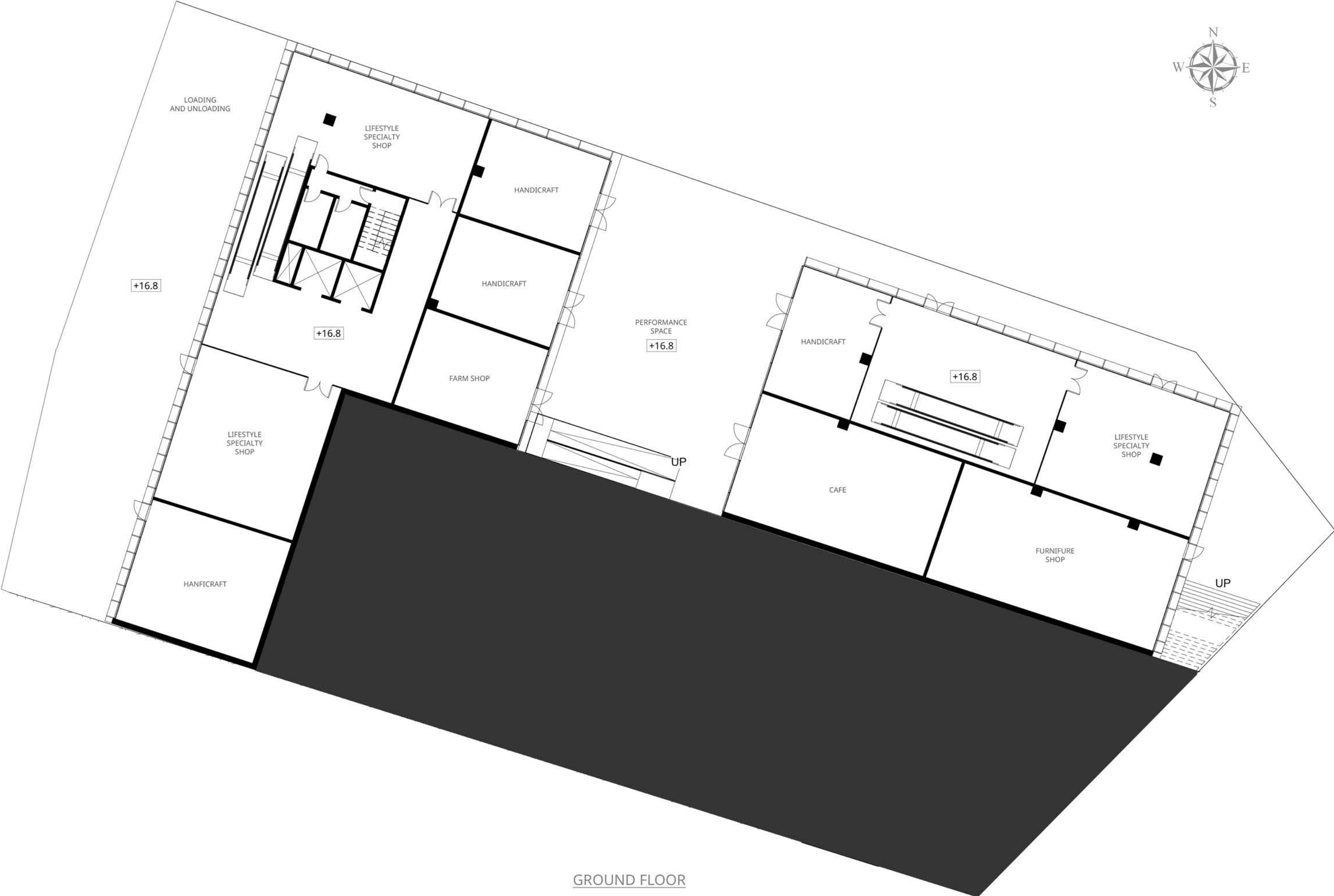
ENTRANCE TO GROUND FLOOR



RAMP TO THE GROUND FLOOR



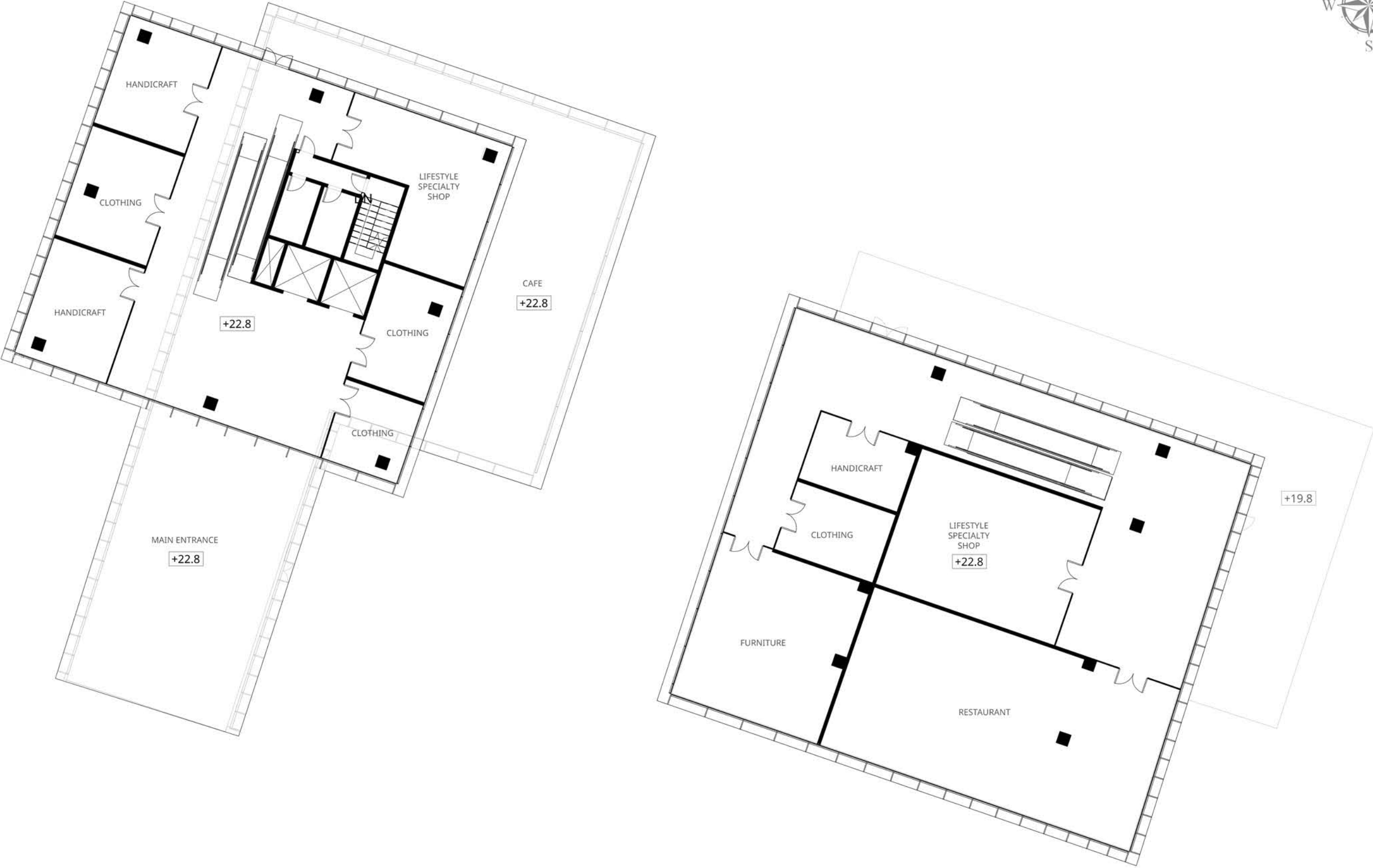
BRIDGE TO FIRST FLOOR



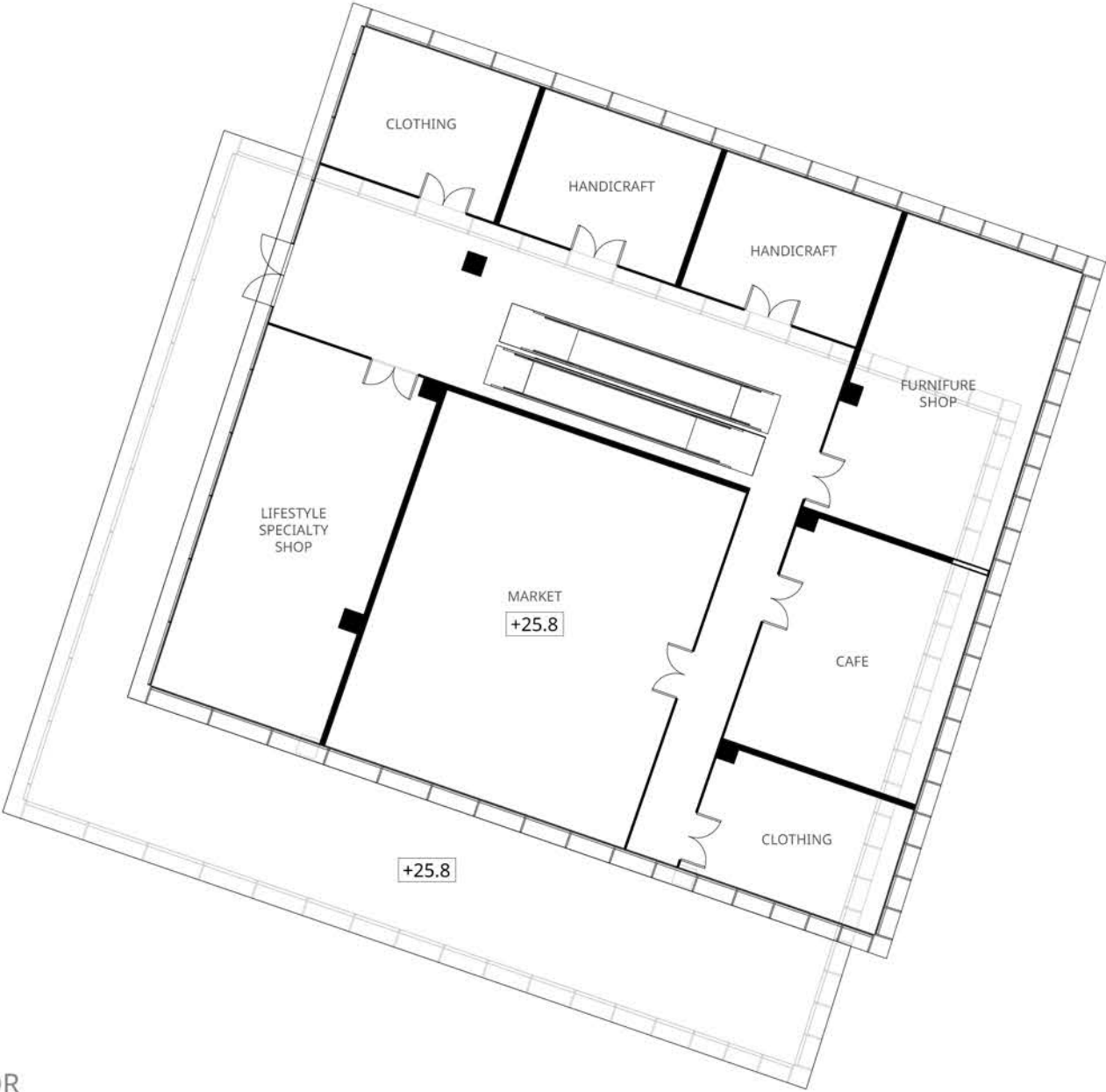
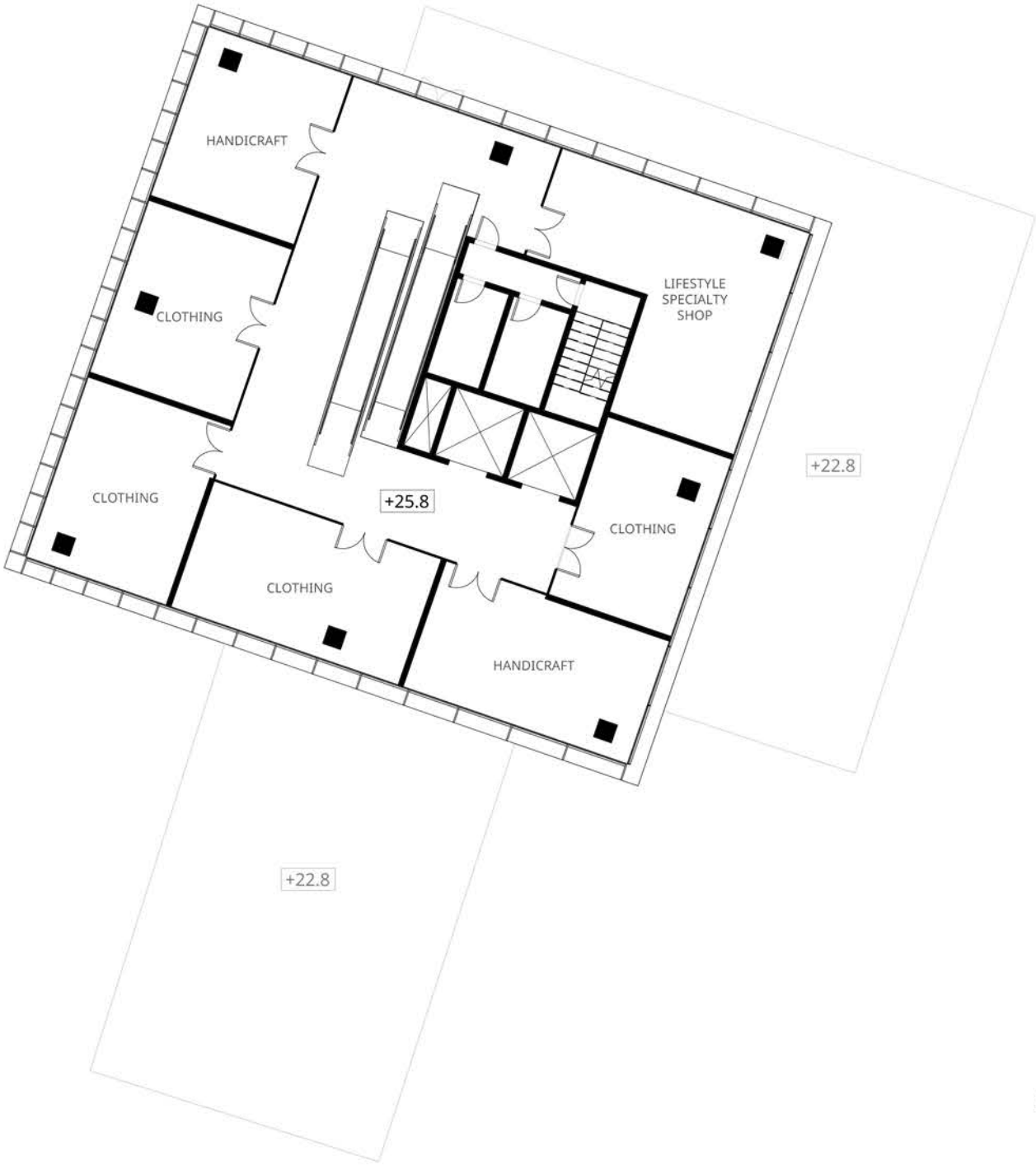
GROUND FLOOR



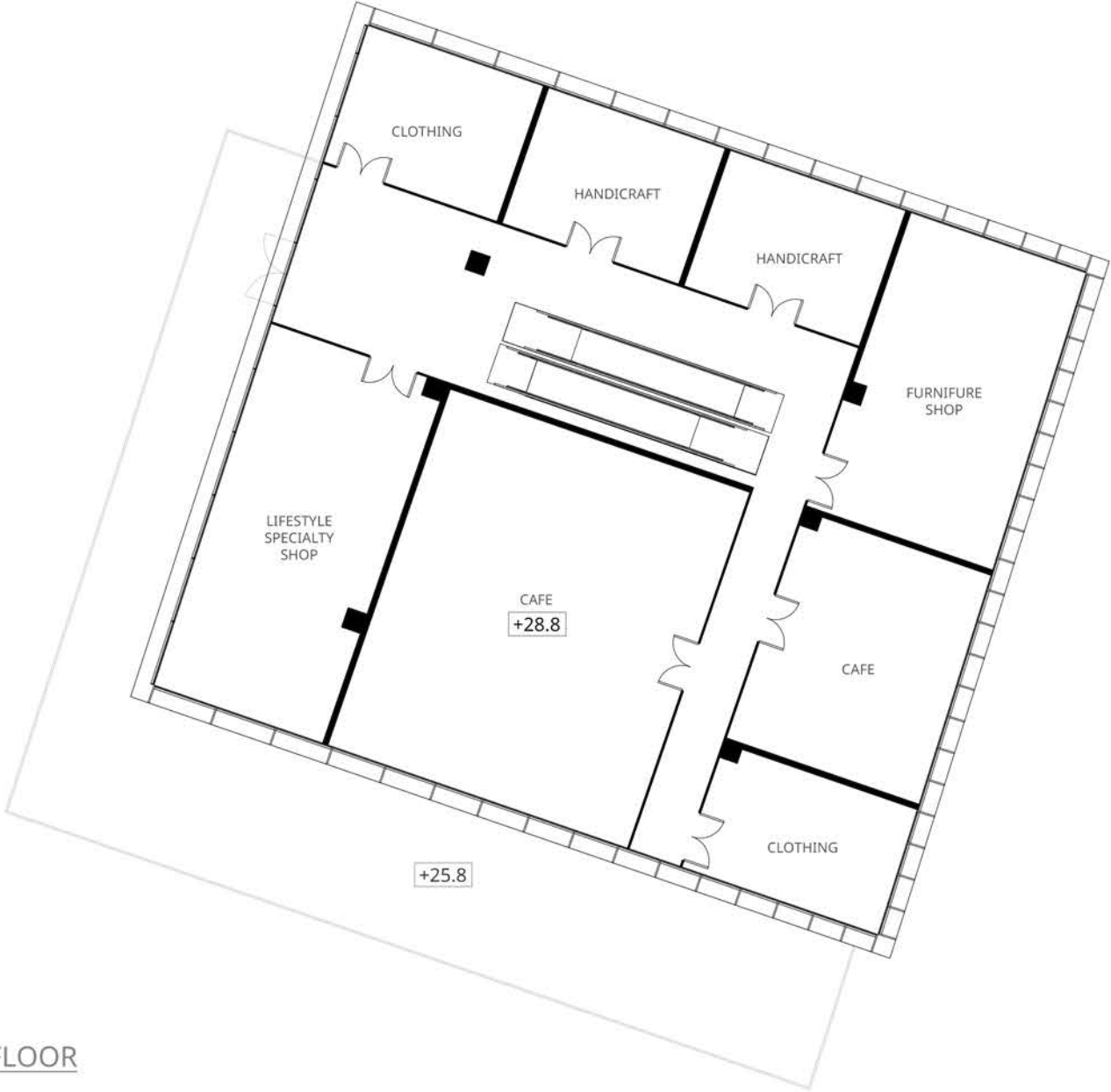
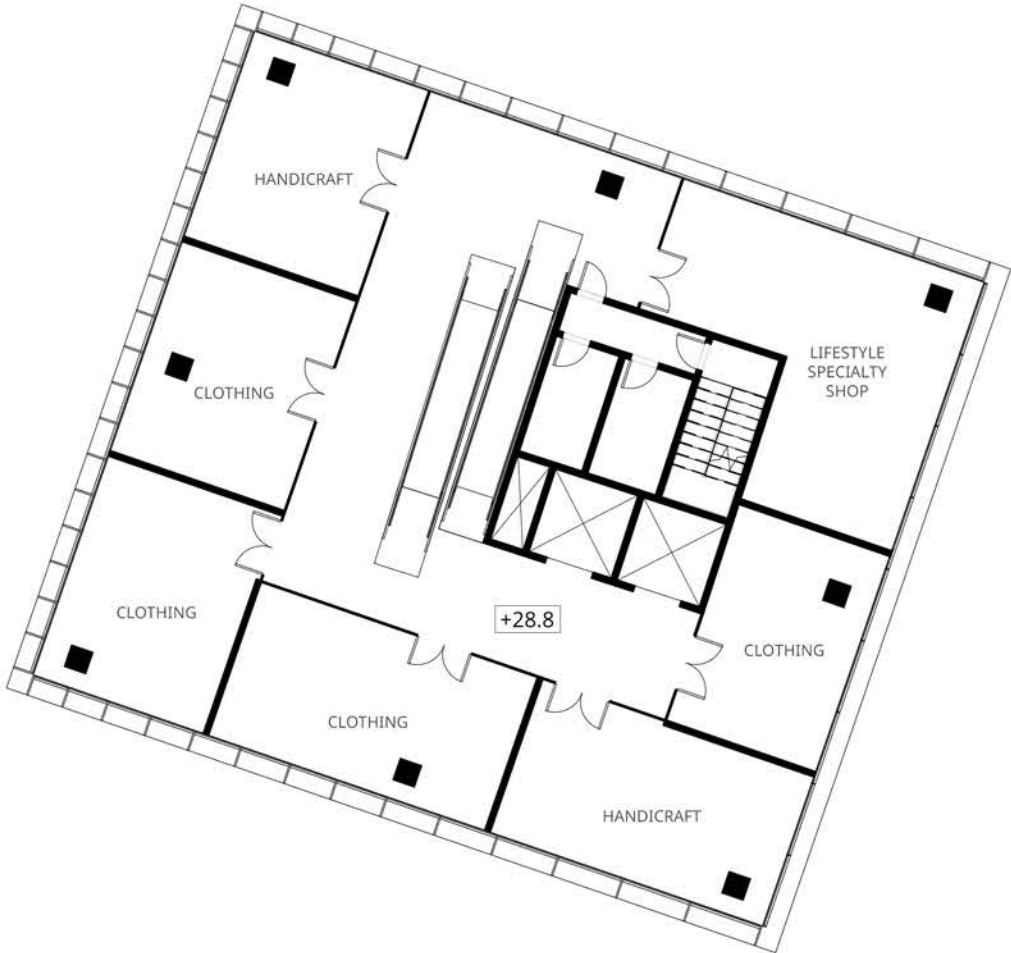
FIRST FLOOR



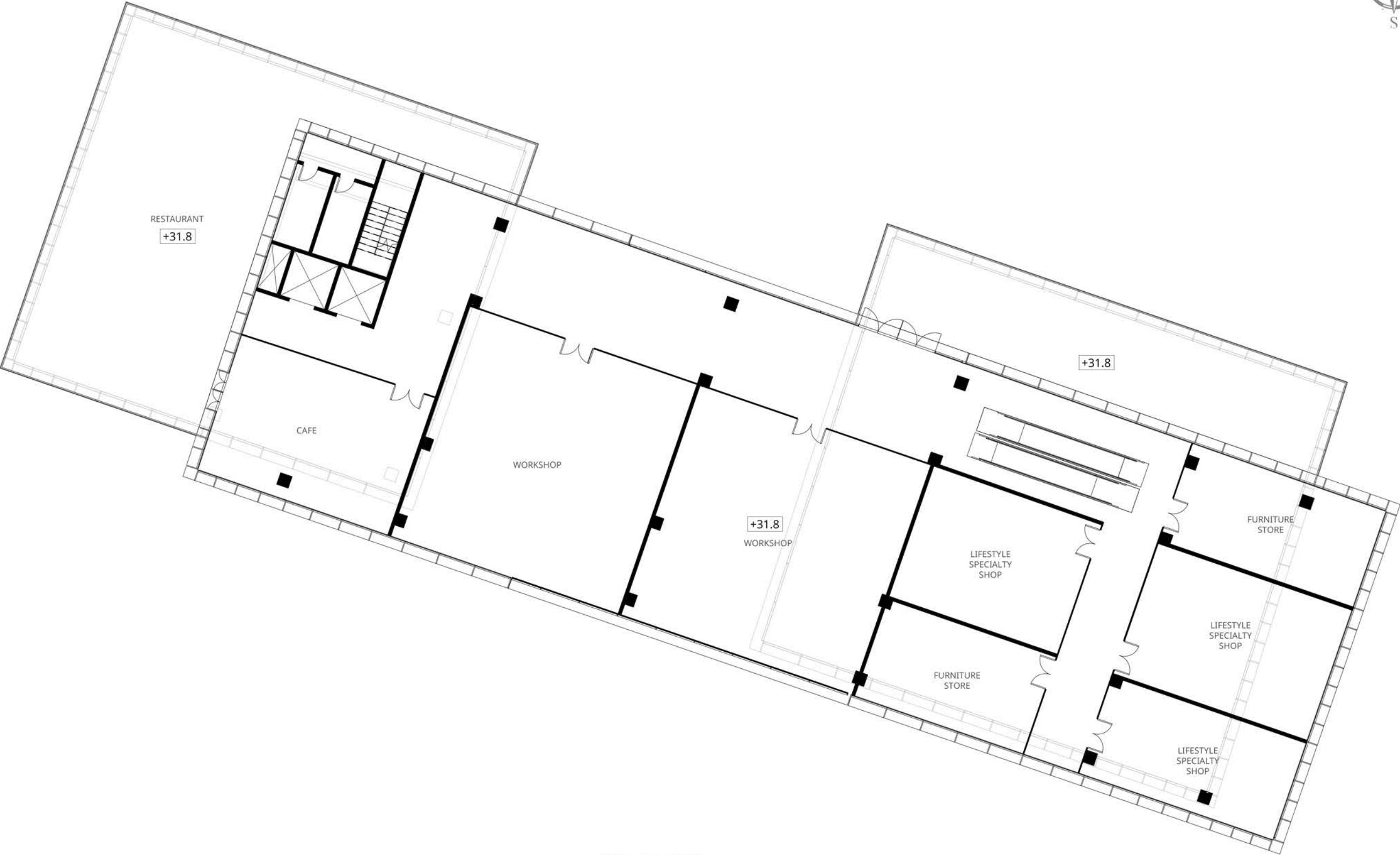
SECOND FLOOR



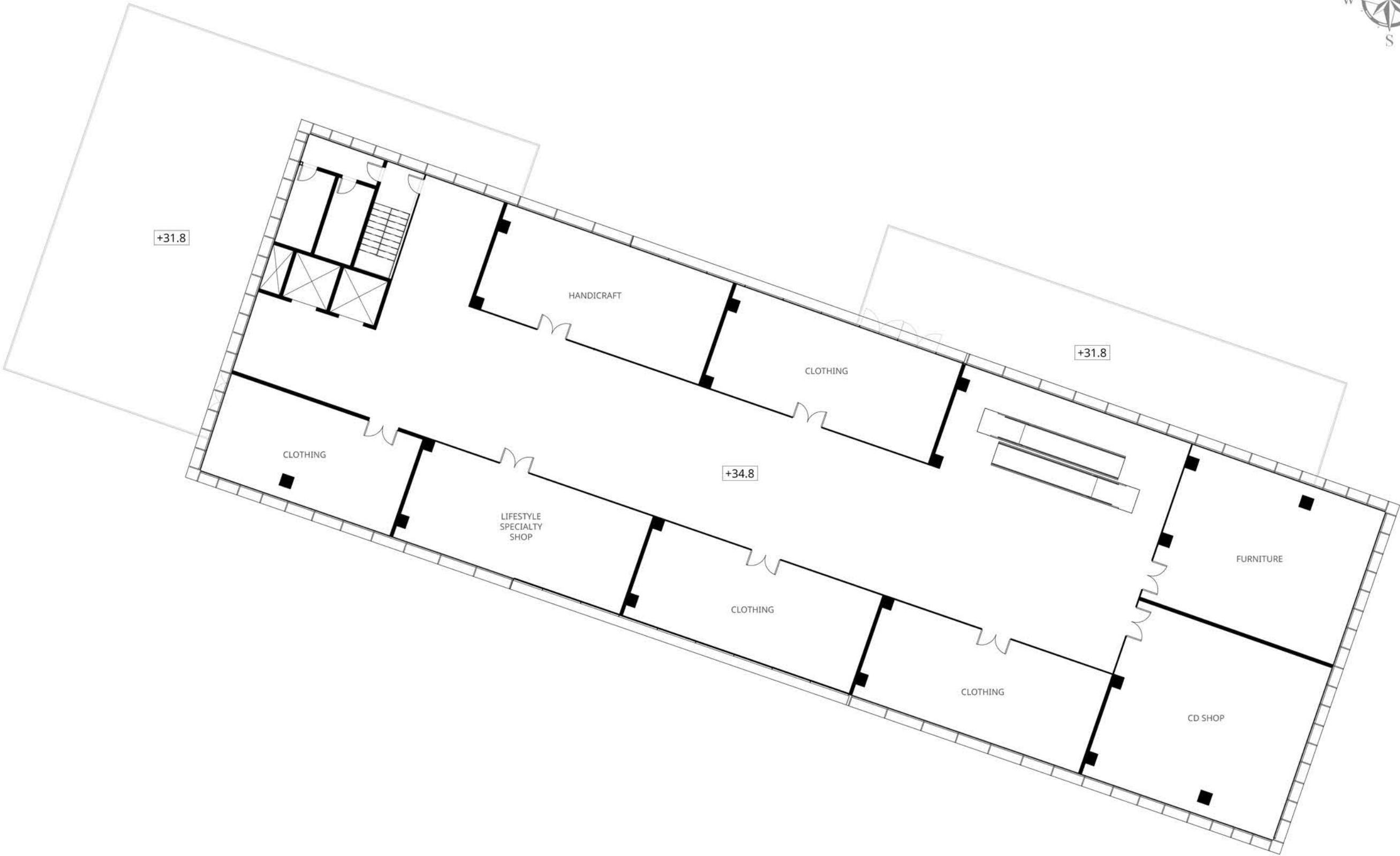
THIRD FLOOR



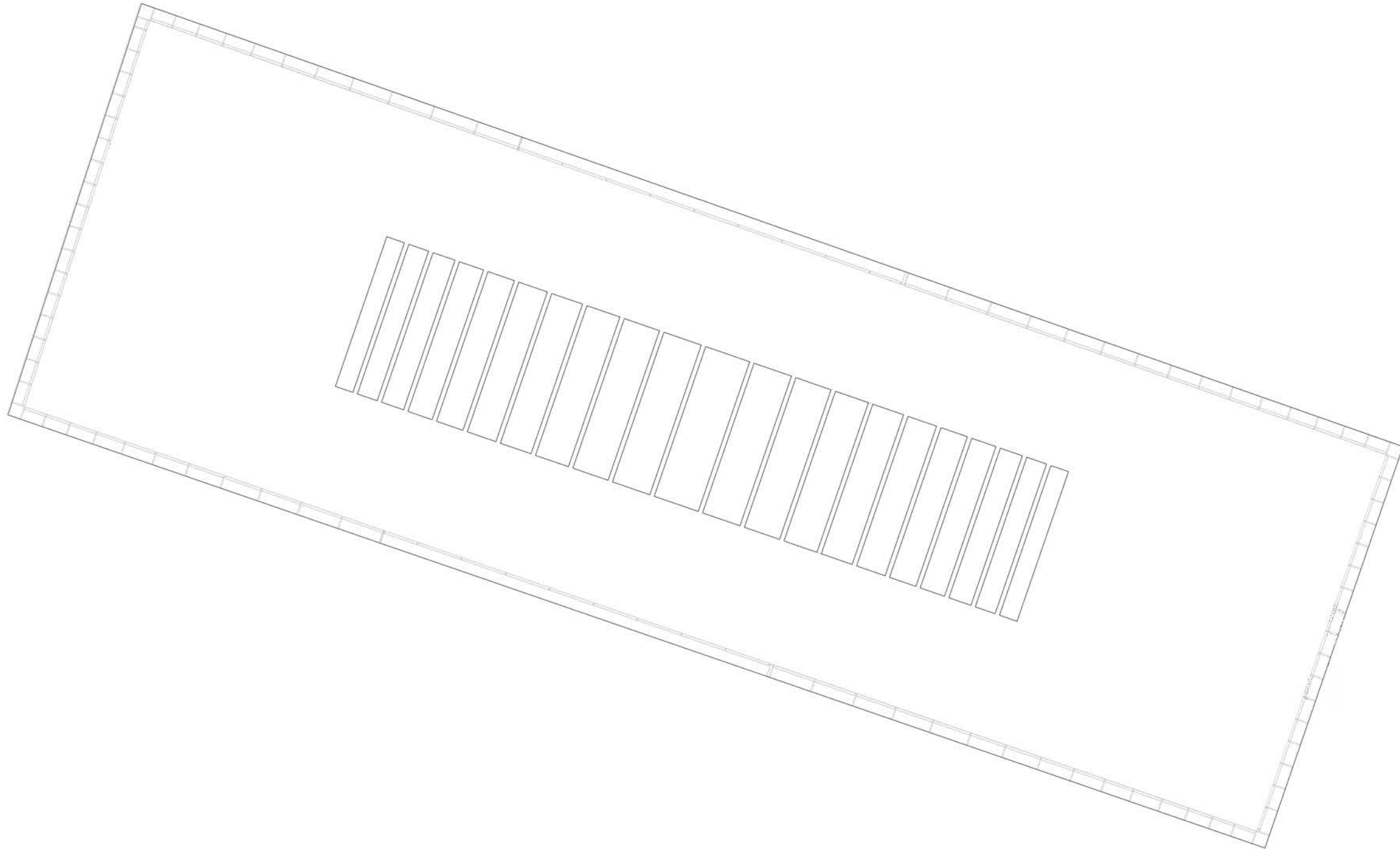
FORTH FLOOR



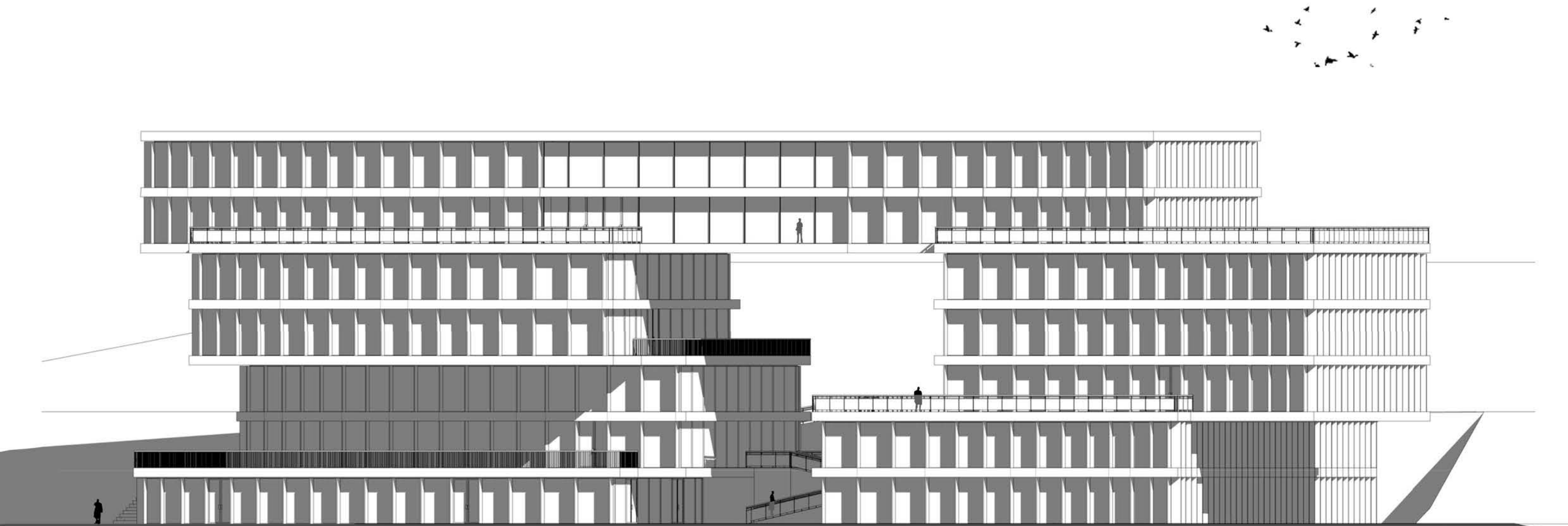
FIFTH FLOOR

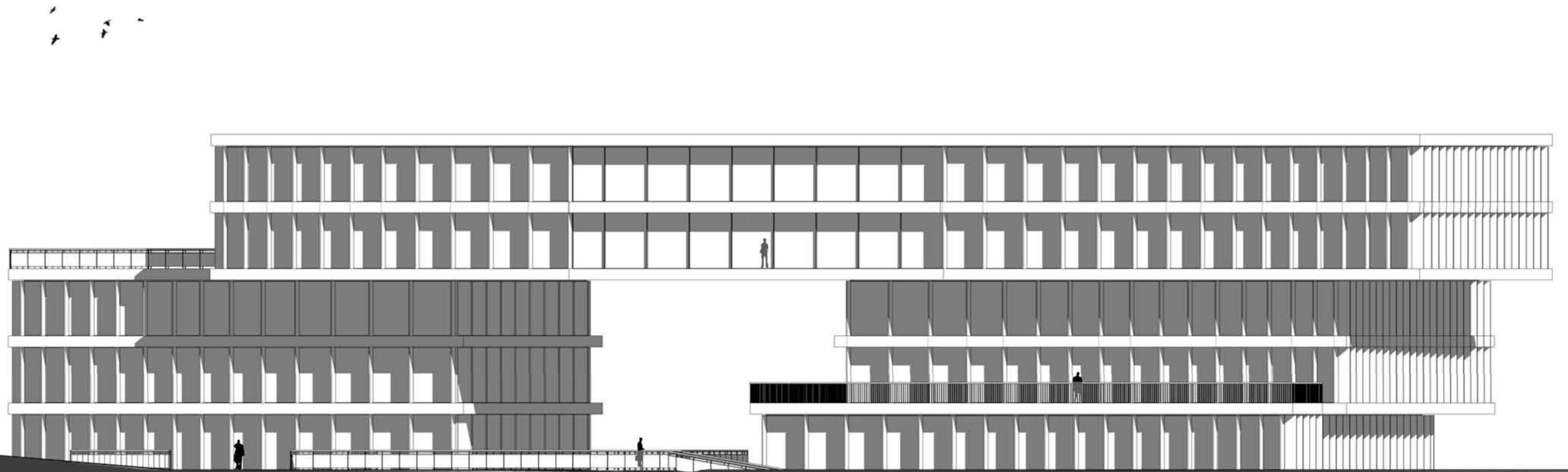


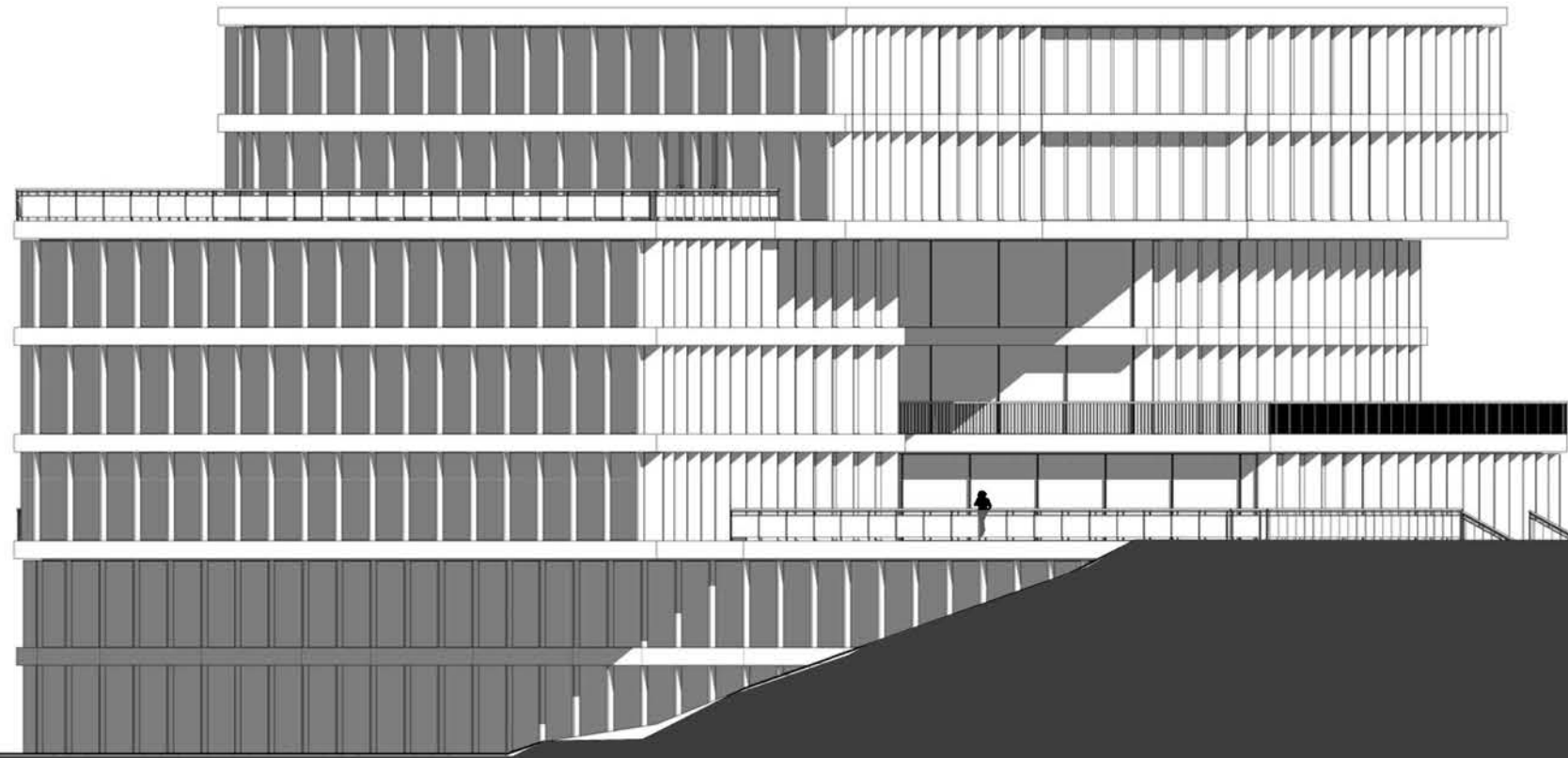
SIXTH FLOOR

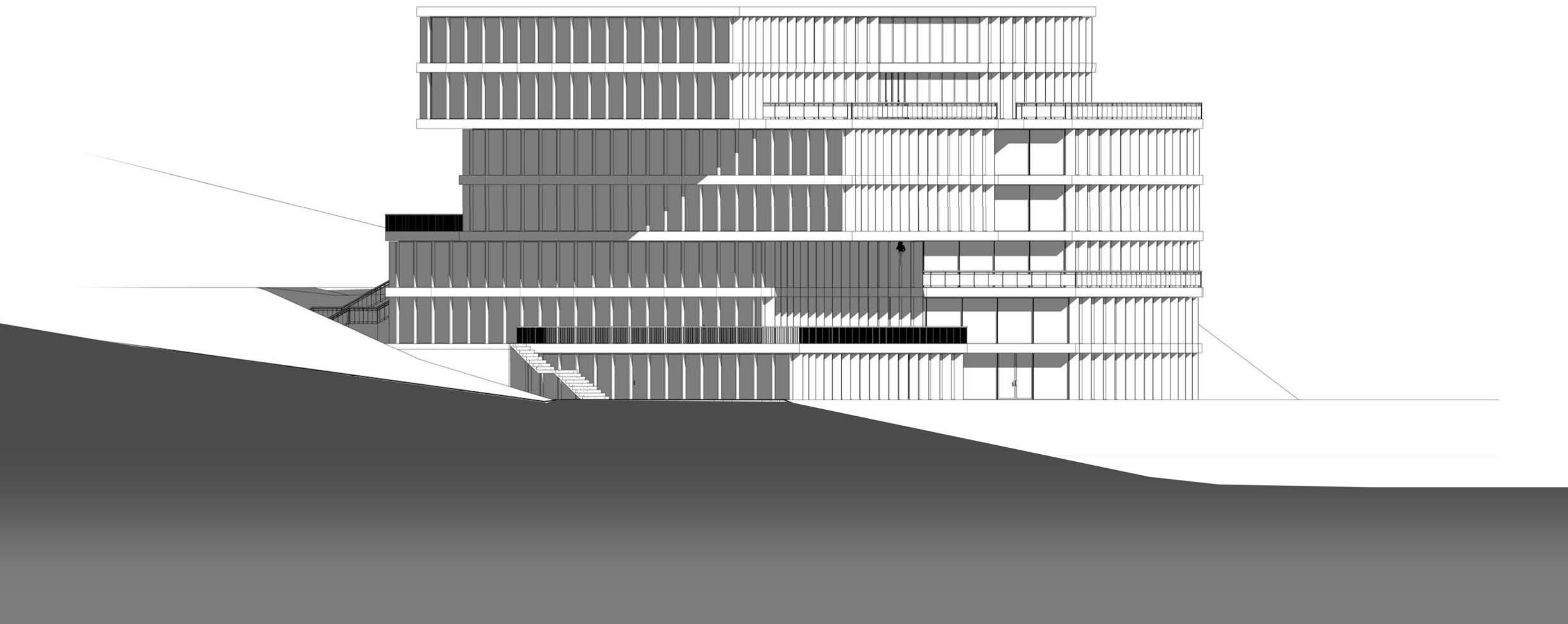


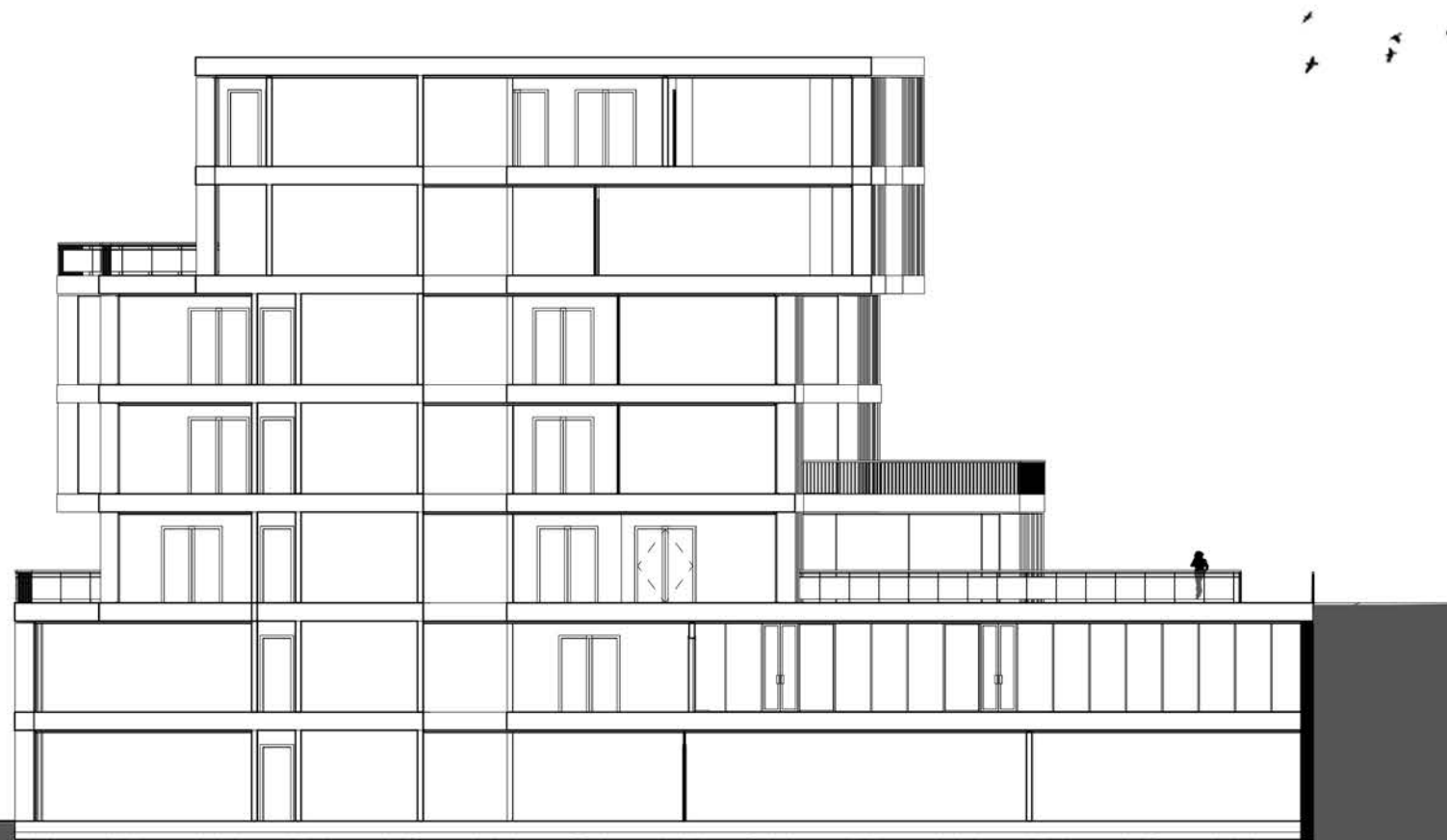
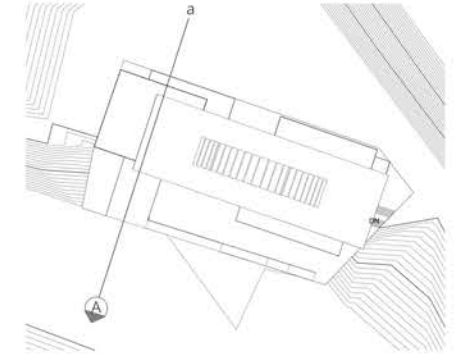
ROOF PLAN

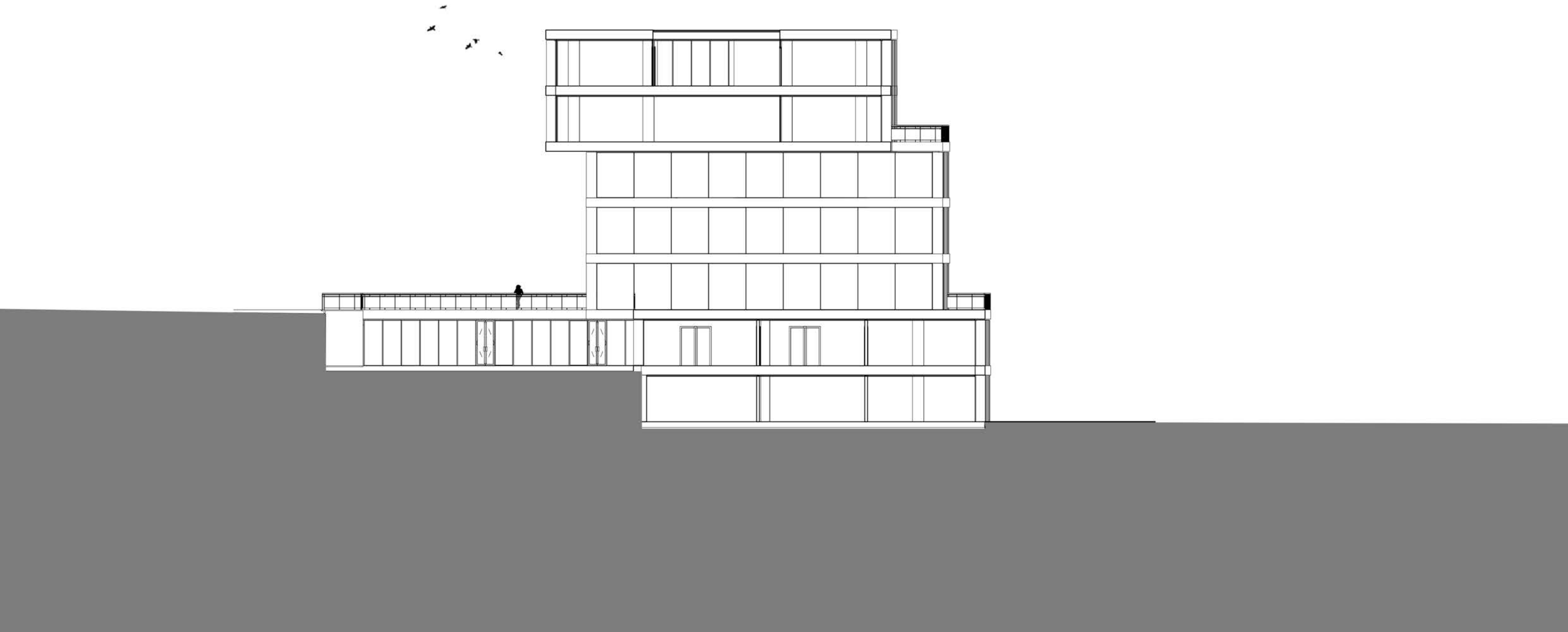
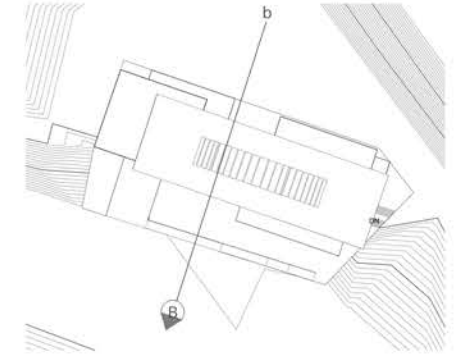


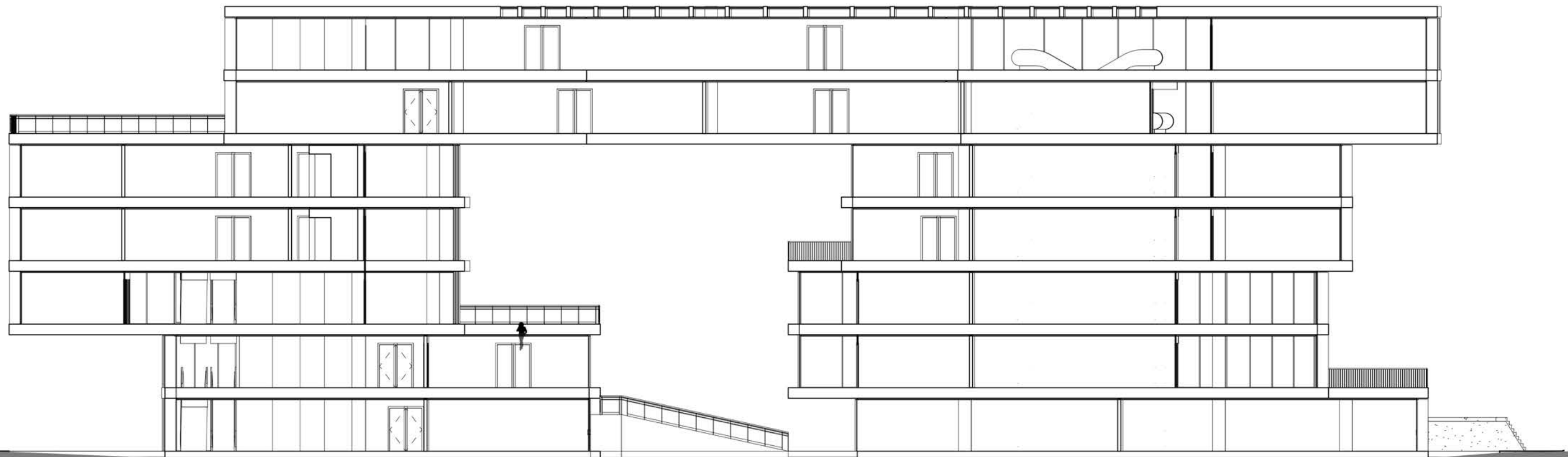
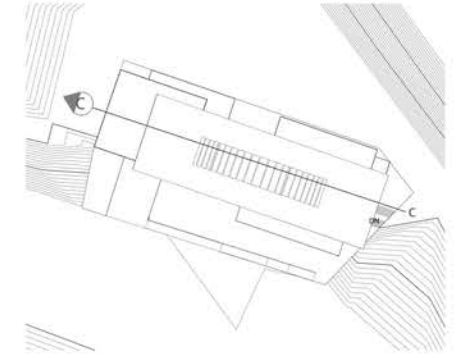








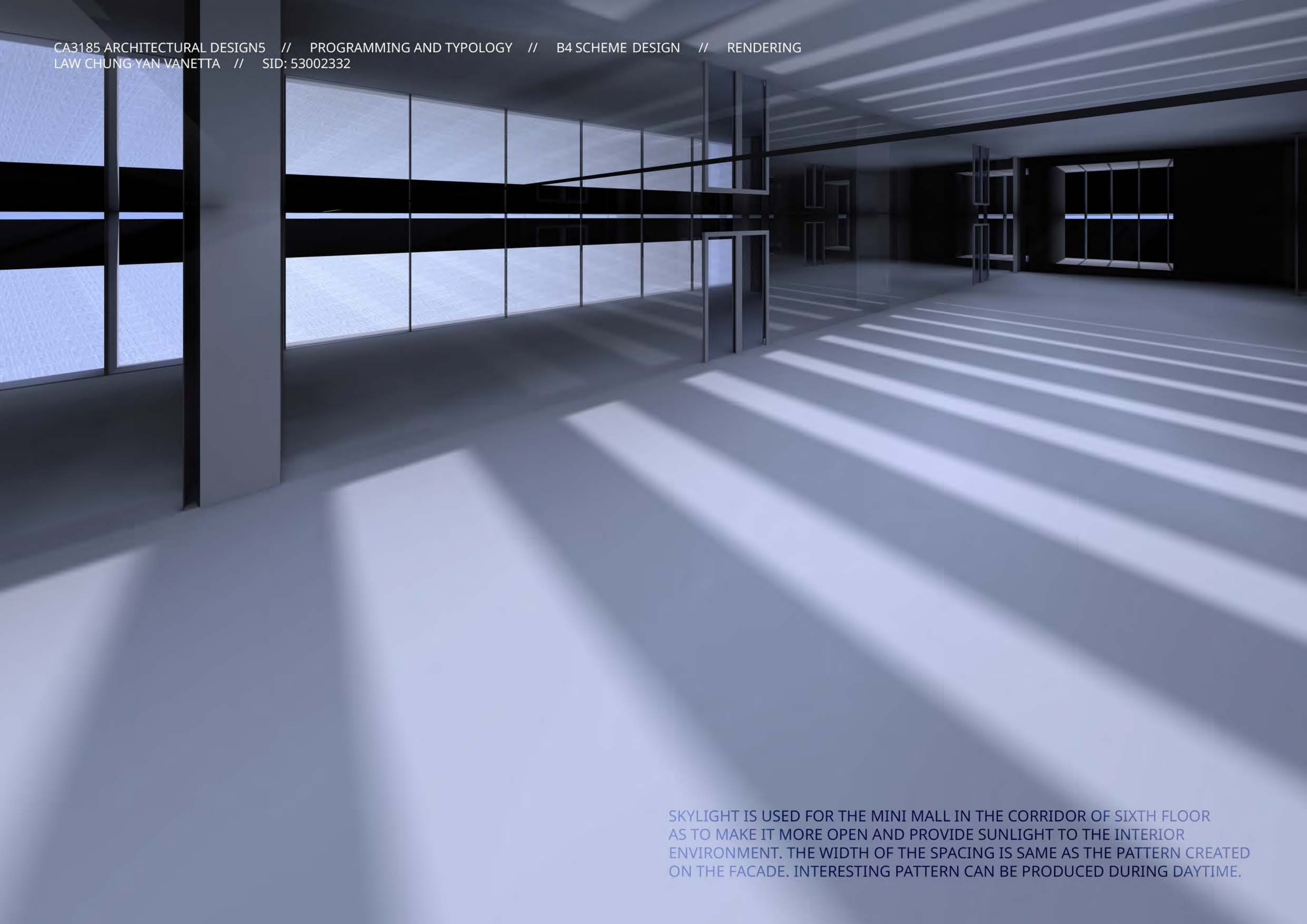




CA3185 ARCHITECTURAL DESIGN5 // PROGRAMMING AND TYPOLOGY // B4 SCHEME DESIGN // RENDERING  
LAW CHUNG YAN VANETTA // SID: 53002332







SKYLIGHT IS USED FOR THE MINI MALL IN THE CORRIDOR OF SIXTH FLOOR AS TO MAKE IT MORE OPEN AND PROVIDE SUNLIGHT TO THE INTERIOR ENVIRONMENT. THE WIDTH OF THE SPACING IS SAME AS THE PATTERN CREATED ON THE FACADE. INTERESTING PATTERN CAN BE PRODUCED DURING DAYTIME.

