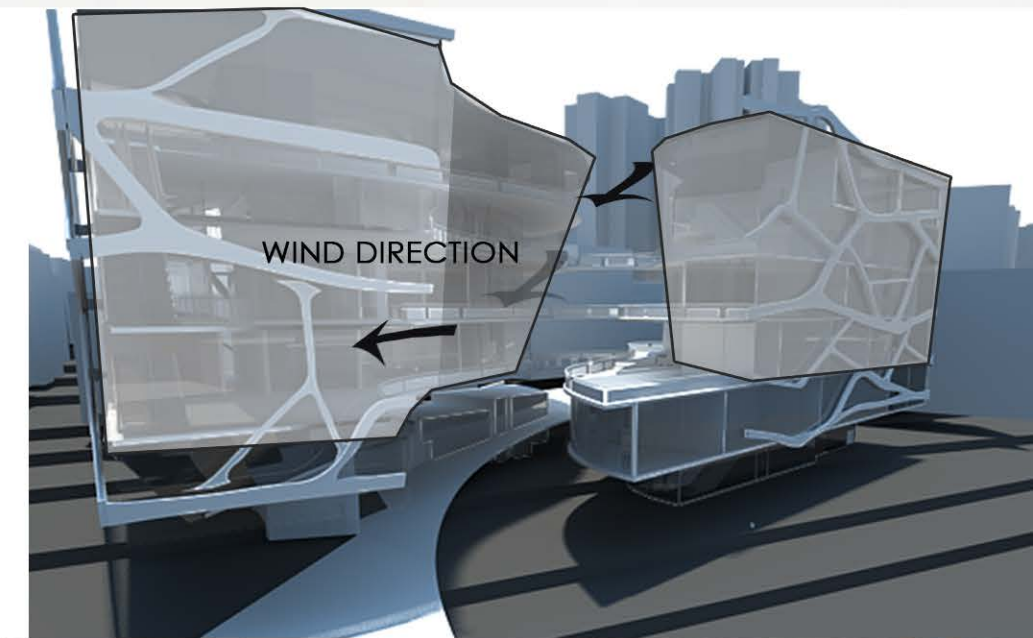
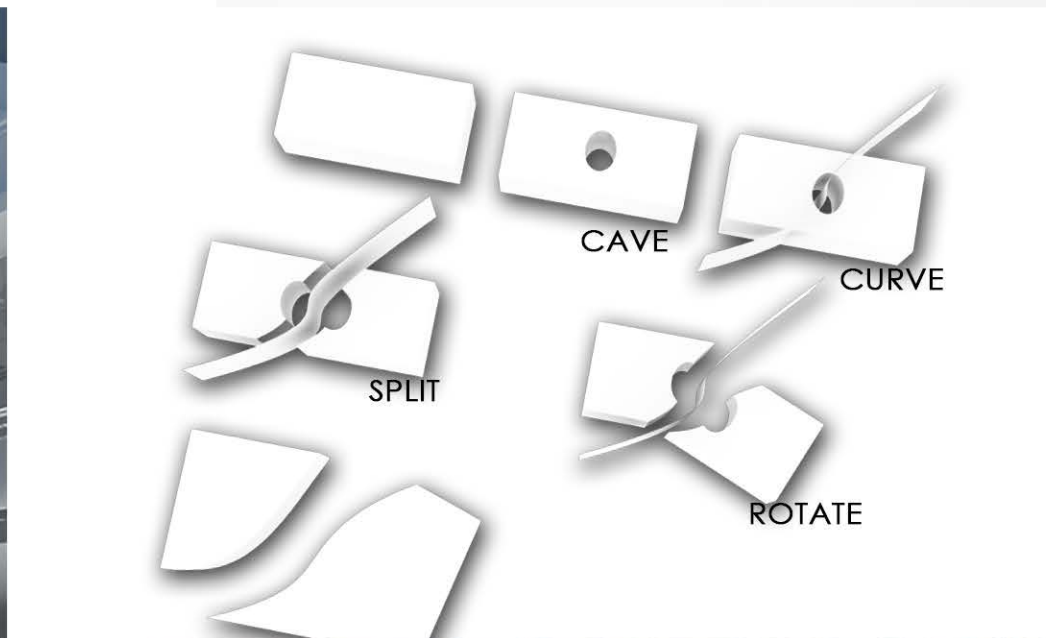
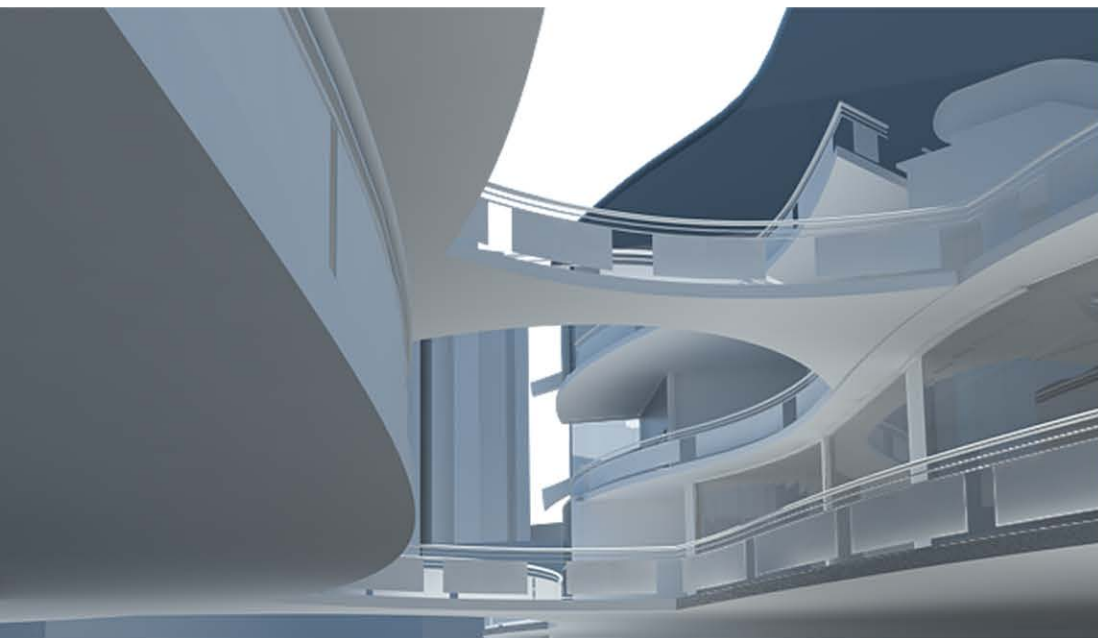
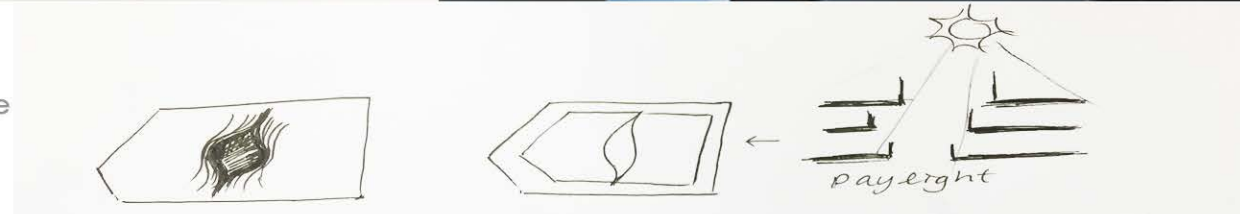


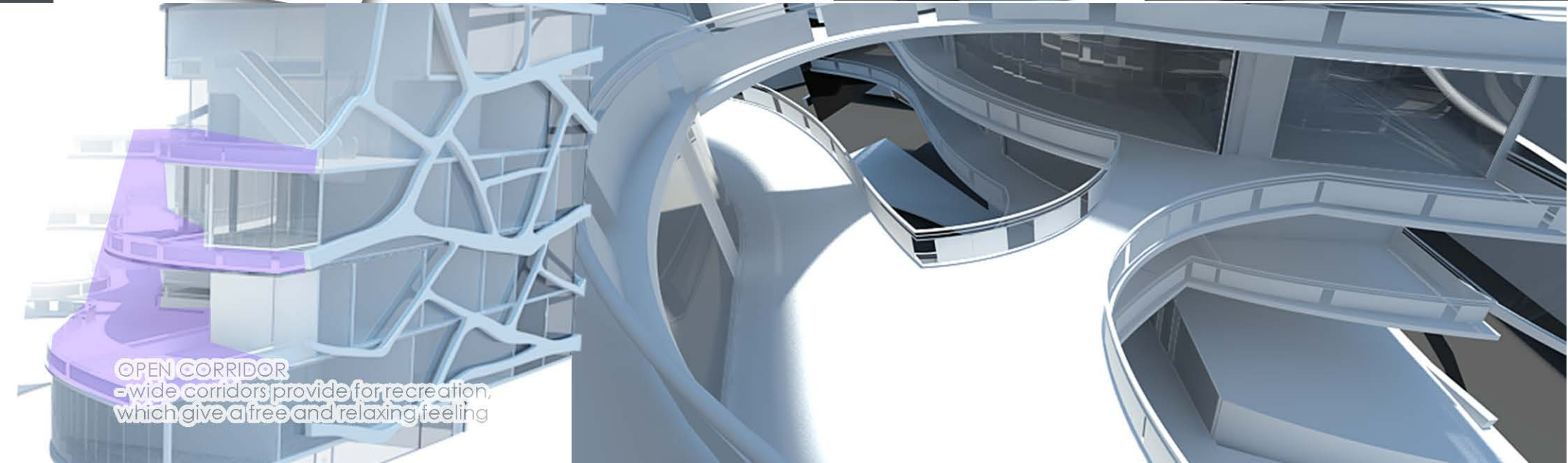
## NATURE

My concept first come from the idea of desert cave. As I think these natural caves are the original living place of human beings, these natural elements have the ability to create a comfortable and safe place for living.



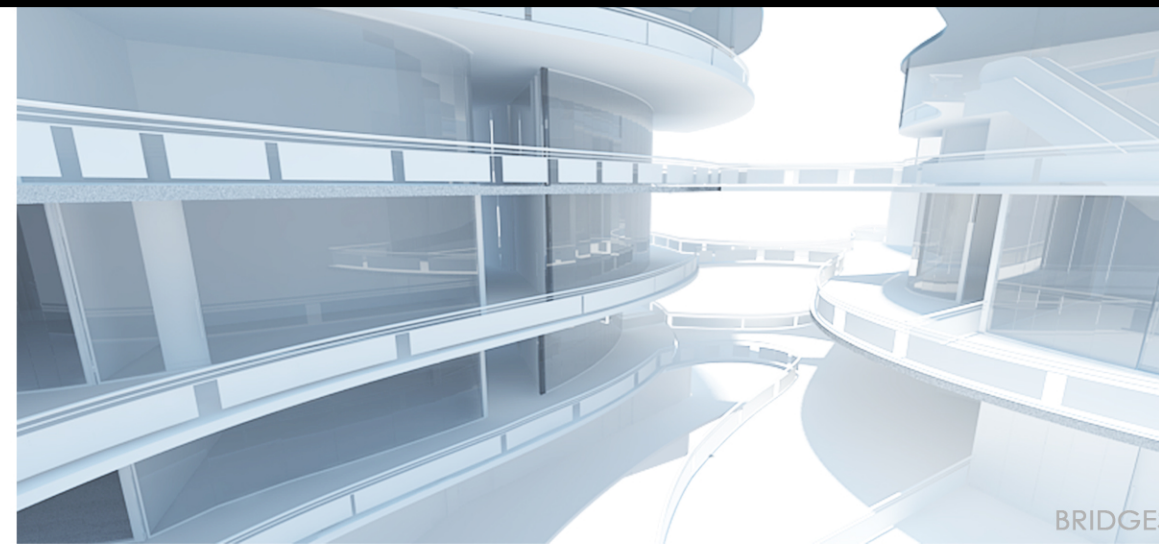
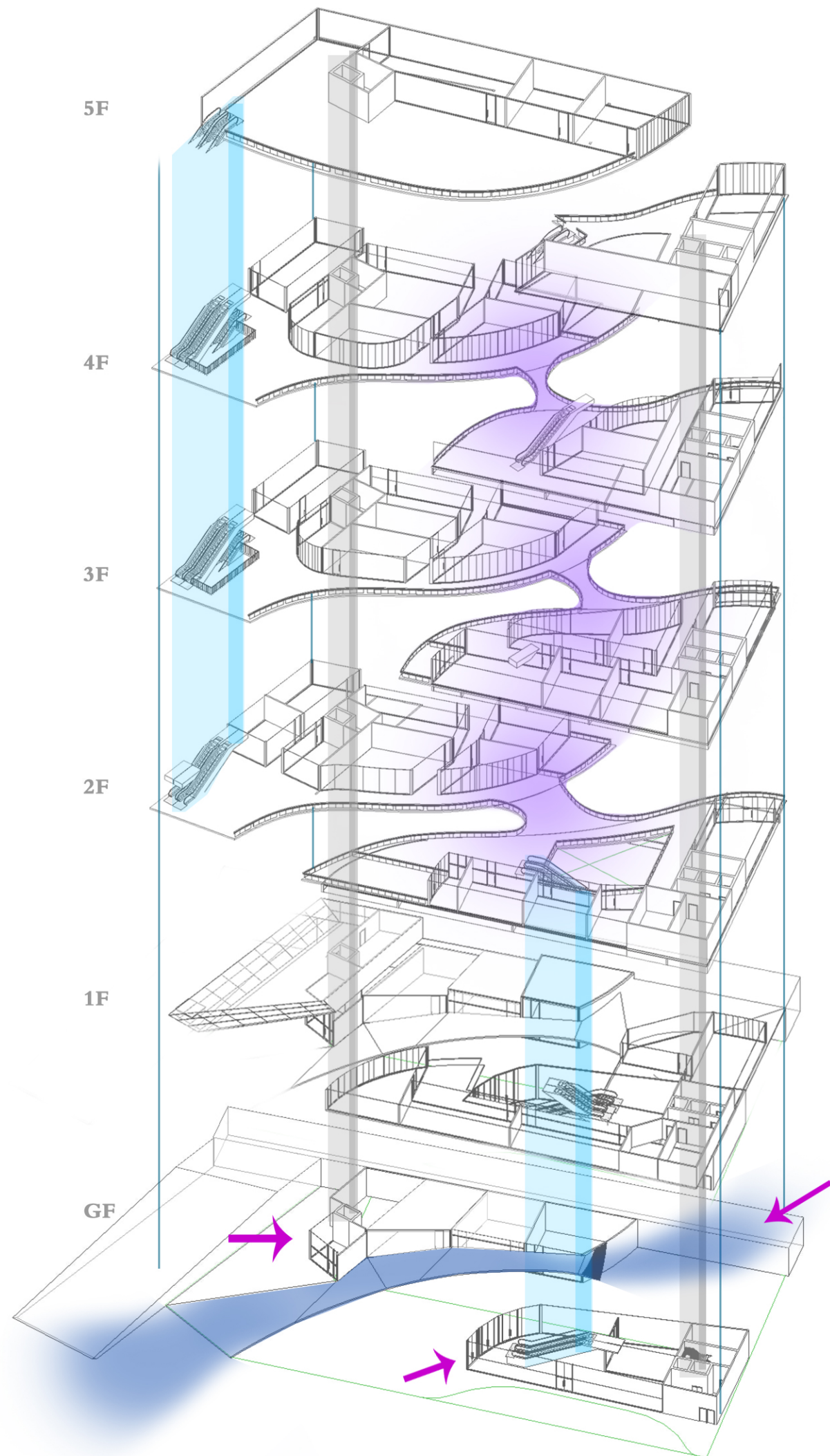
## NATURAL VENTILATION

In my design, an open corridor was used. Only inside the shops will be provided with air-conditioning. As my design in breeze capturing, I designed all the circulation and public space are natural ventilated as to provide a natural and comfortable feeling to the visitors.



OPEN CORRIDOR  
wide corridors provide for recreation,  
which give a free and relaxing feeling





People can use the bridges to travel around two masses. However on the fifth floor, no bridges are provided to travel. They can just see the opposite mass. When they get to the highest floor, they may finally realize there is no path to the other side. Just like adventure in the nature, there no paths are constructed in sequences. Nature is random and surprising.

- ESCALATOR
- ELEVATOR
- BRIDGES
- RAMP
- ENTRY

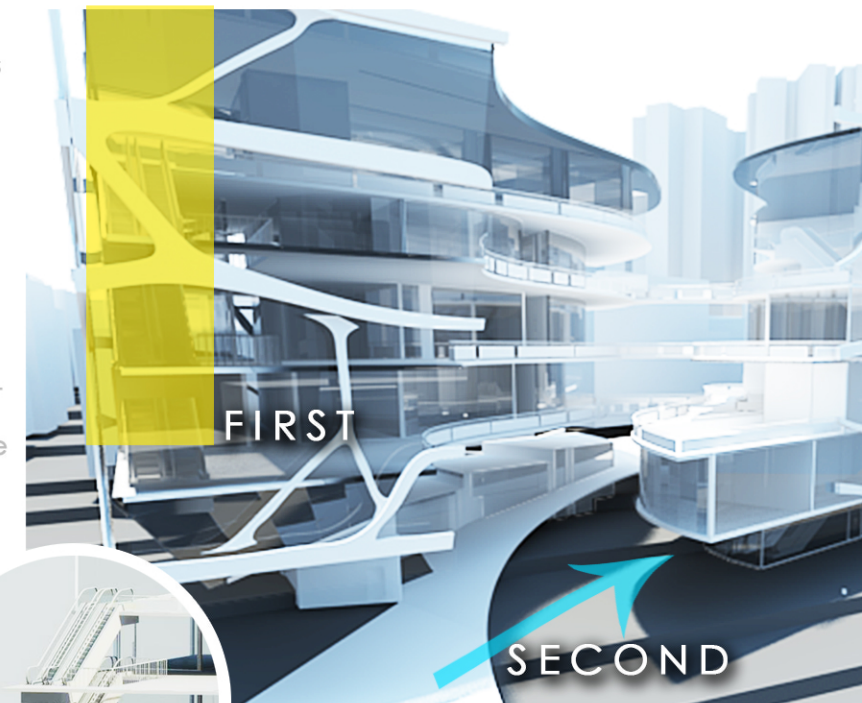
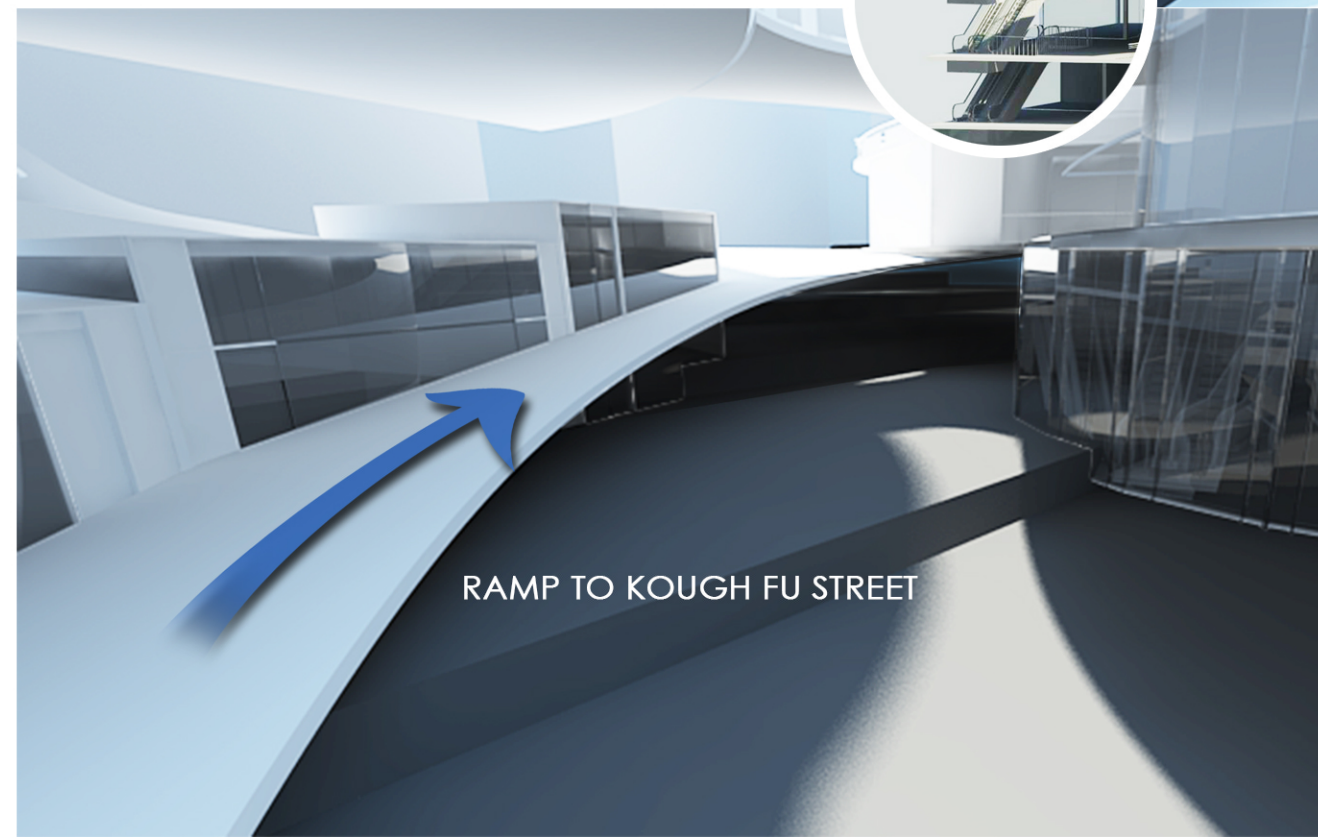
## ADVENTURE FEELING

Except the escalators, there are two main circulation paths – bridges and escalators. If named the two masses as A and B, although the main entrance is at A, the main escalators for the upper levels are at B. People need to explore the fastest path to their destination.

When people come from the street, they will see the escalators in B first, but they will soon find out that it is not accessible from these escalators. They need to find another way to go up the building.

Improve the permeability of pedestrian flows along the slope. Provide different ways for them to travel along the center open area.

## PERMEABILITY



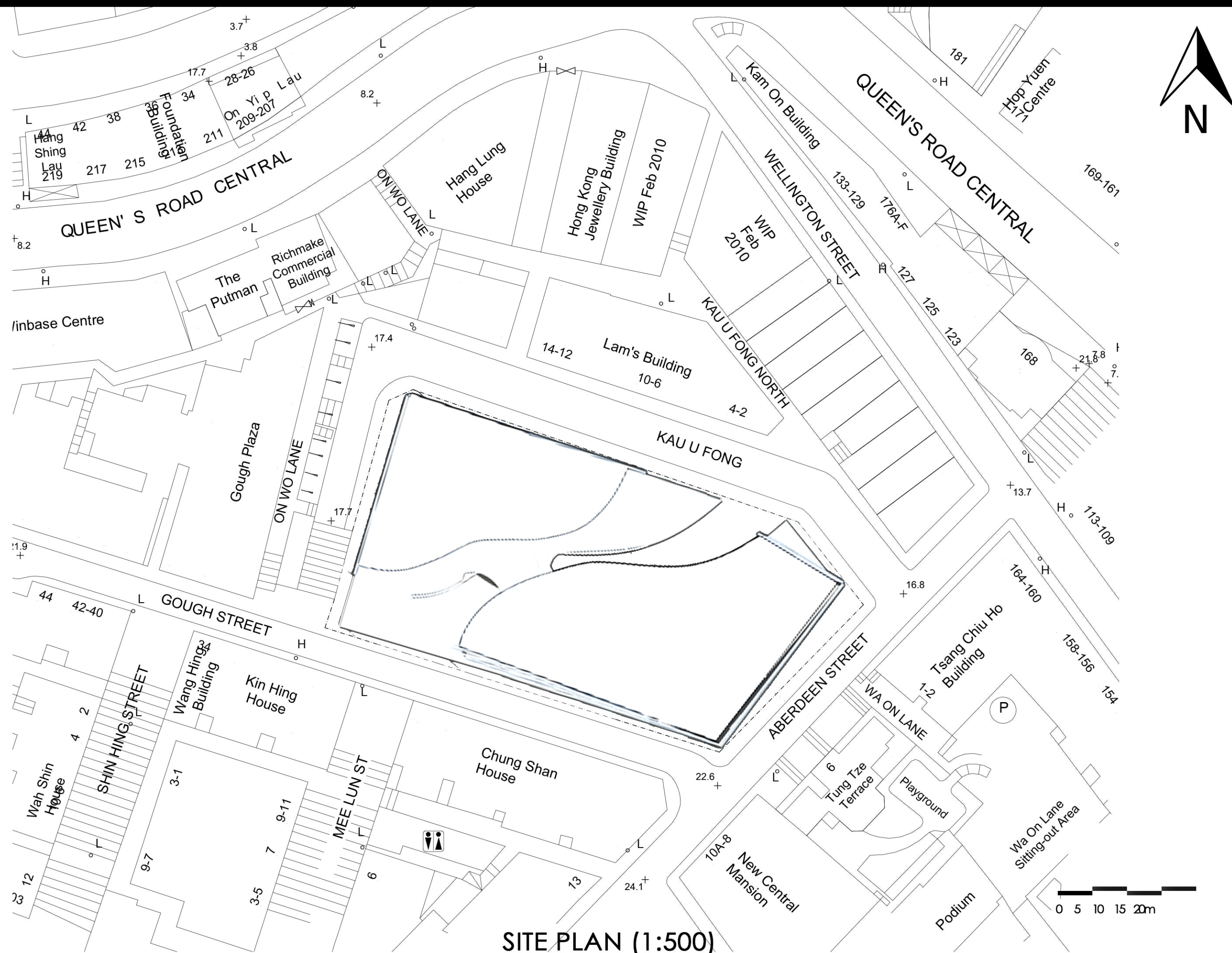
FIRST

SECOND

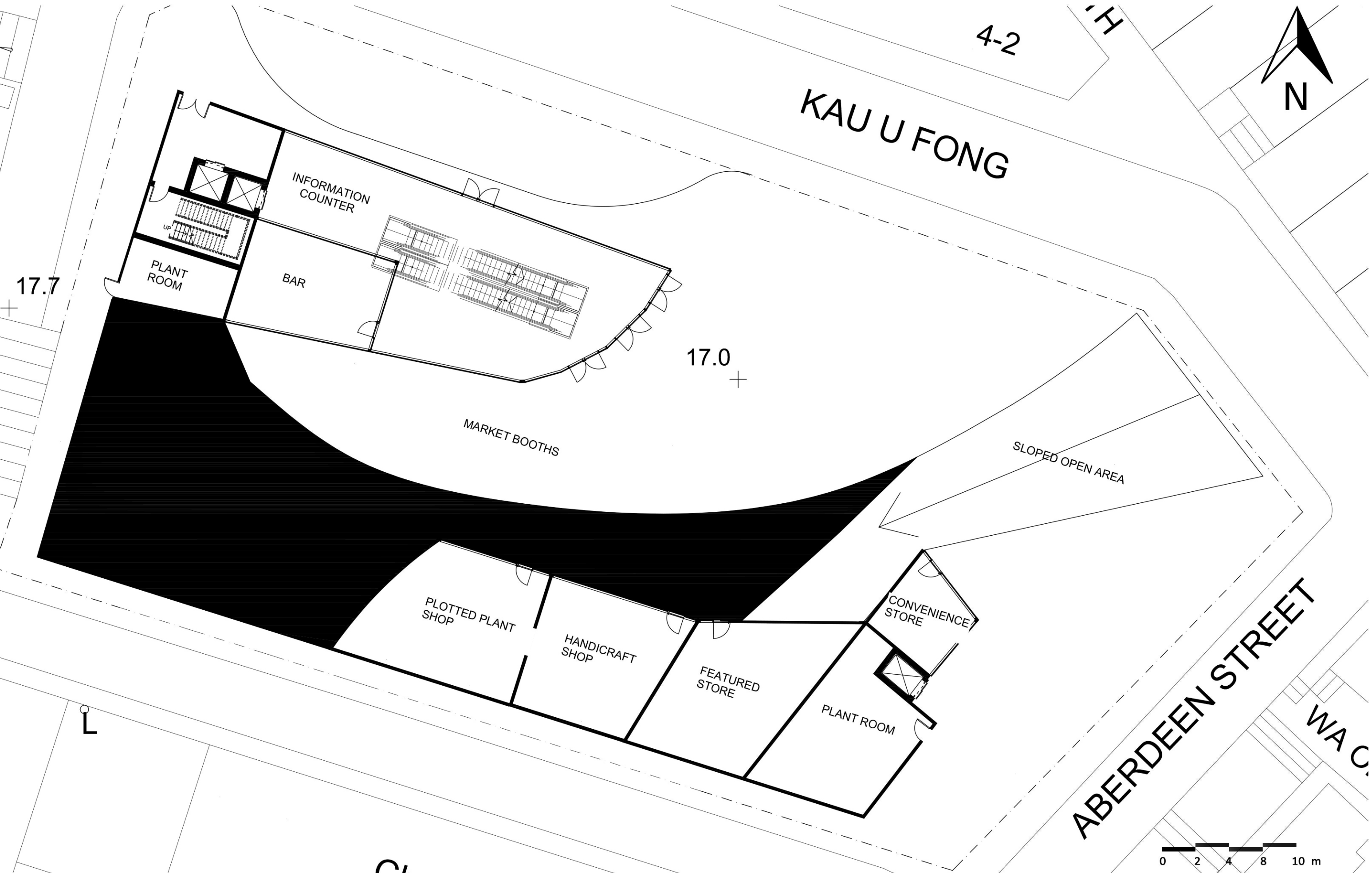
There are three entries. For the entrance of Gough Fu Street, visitors are required to walk down to the ramp and enter the building using the main entrance. It is because they can stay longer on the ramp and feel the relax ambience.

RAMP TO KOUGH FU STREET





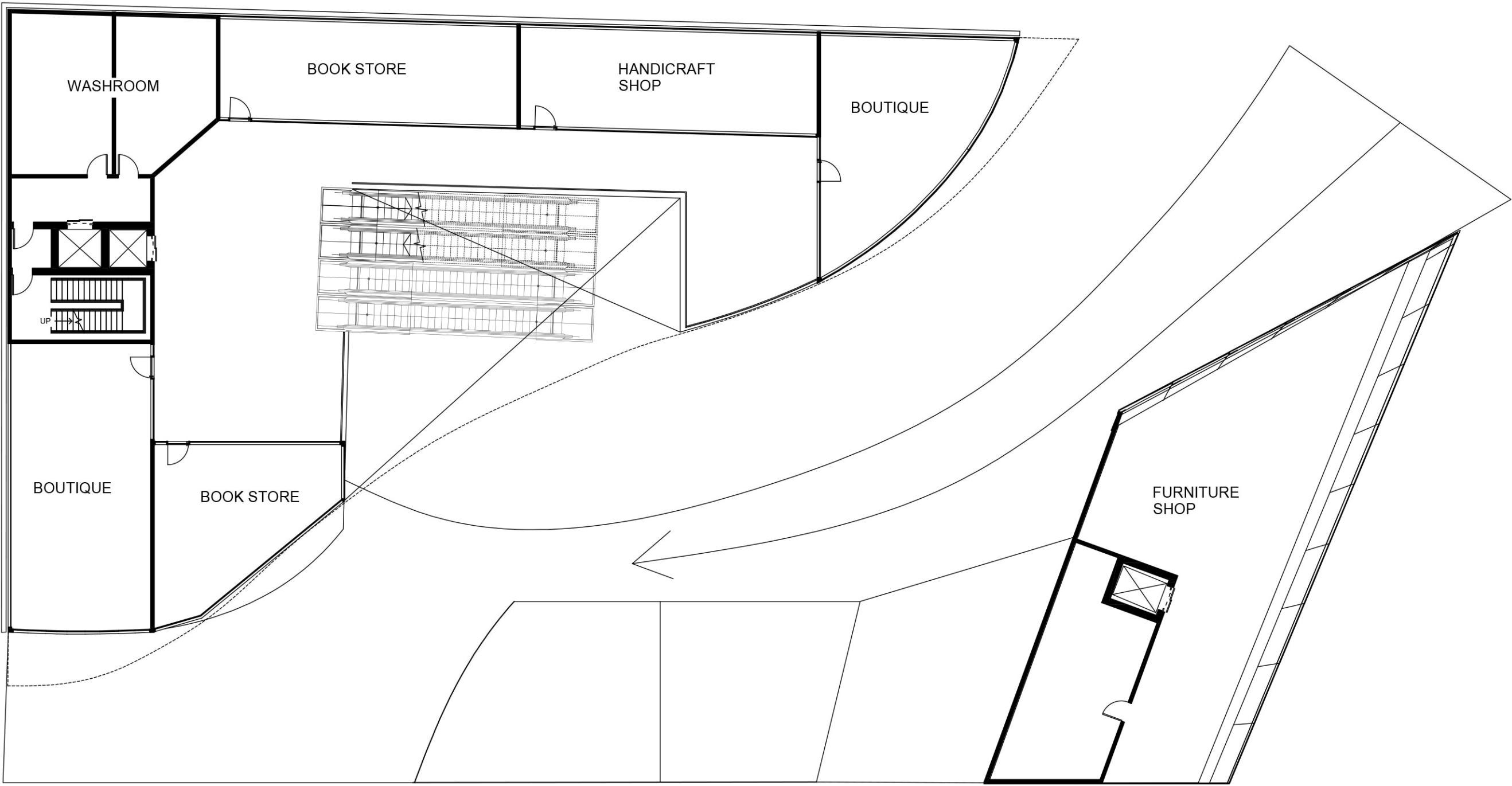
SITE PLAN (1:500)



Ch...

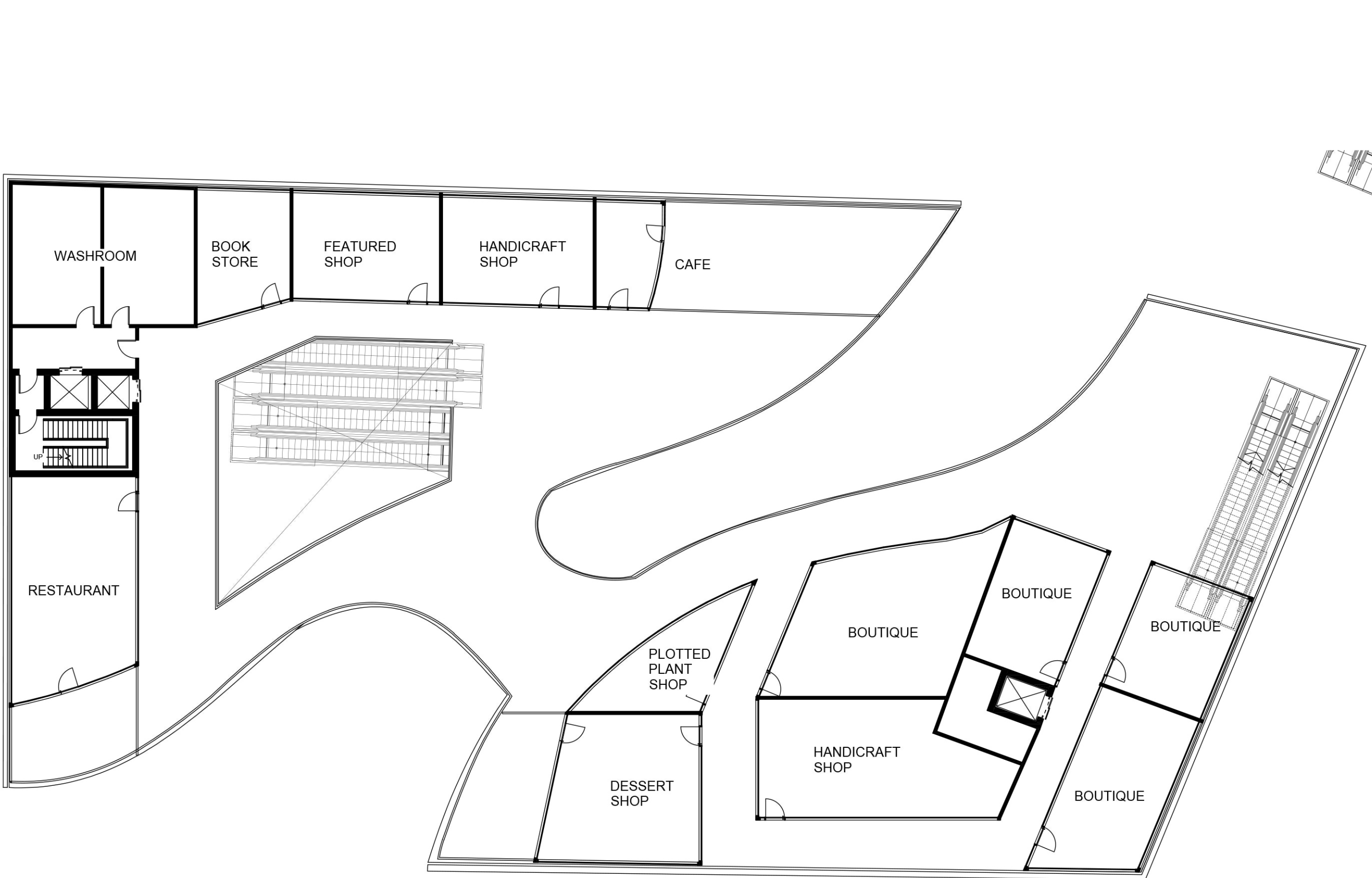
GROUND FLOOR PLAN (1:200)





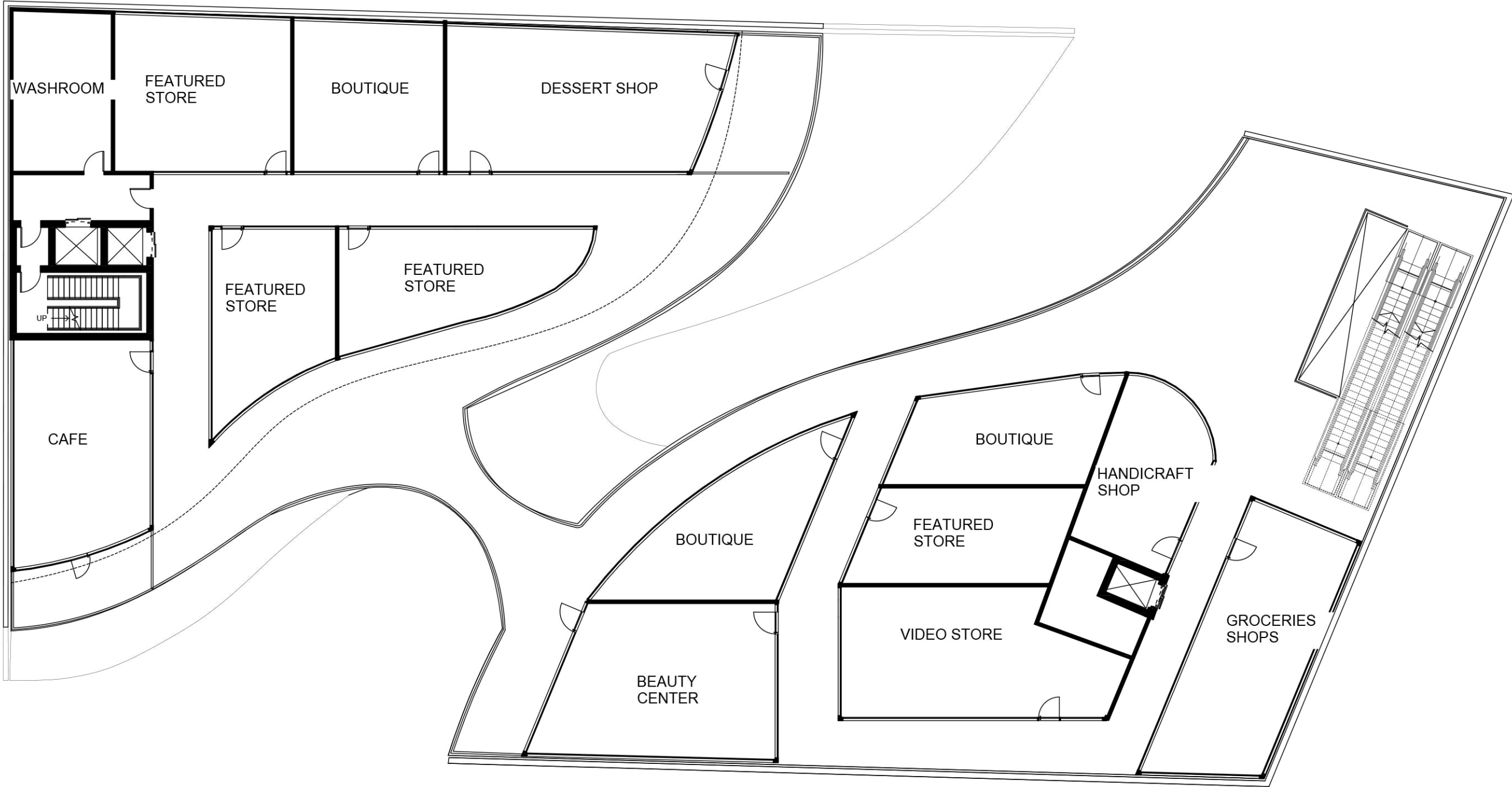
FIRST FLOOR PLAN (1:200)





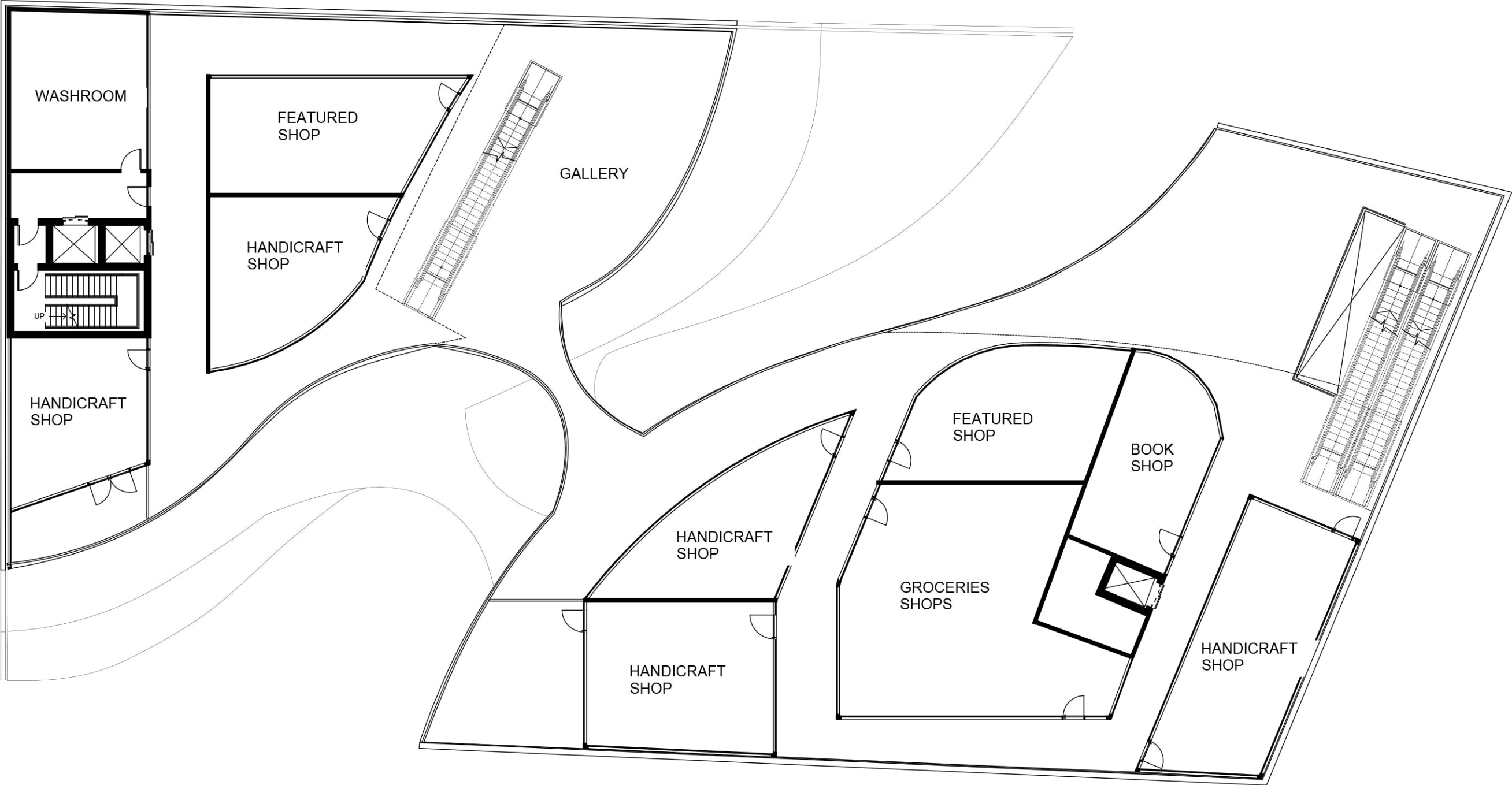
SECOND FLOOR PLAN (1:200)





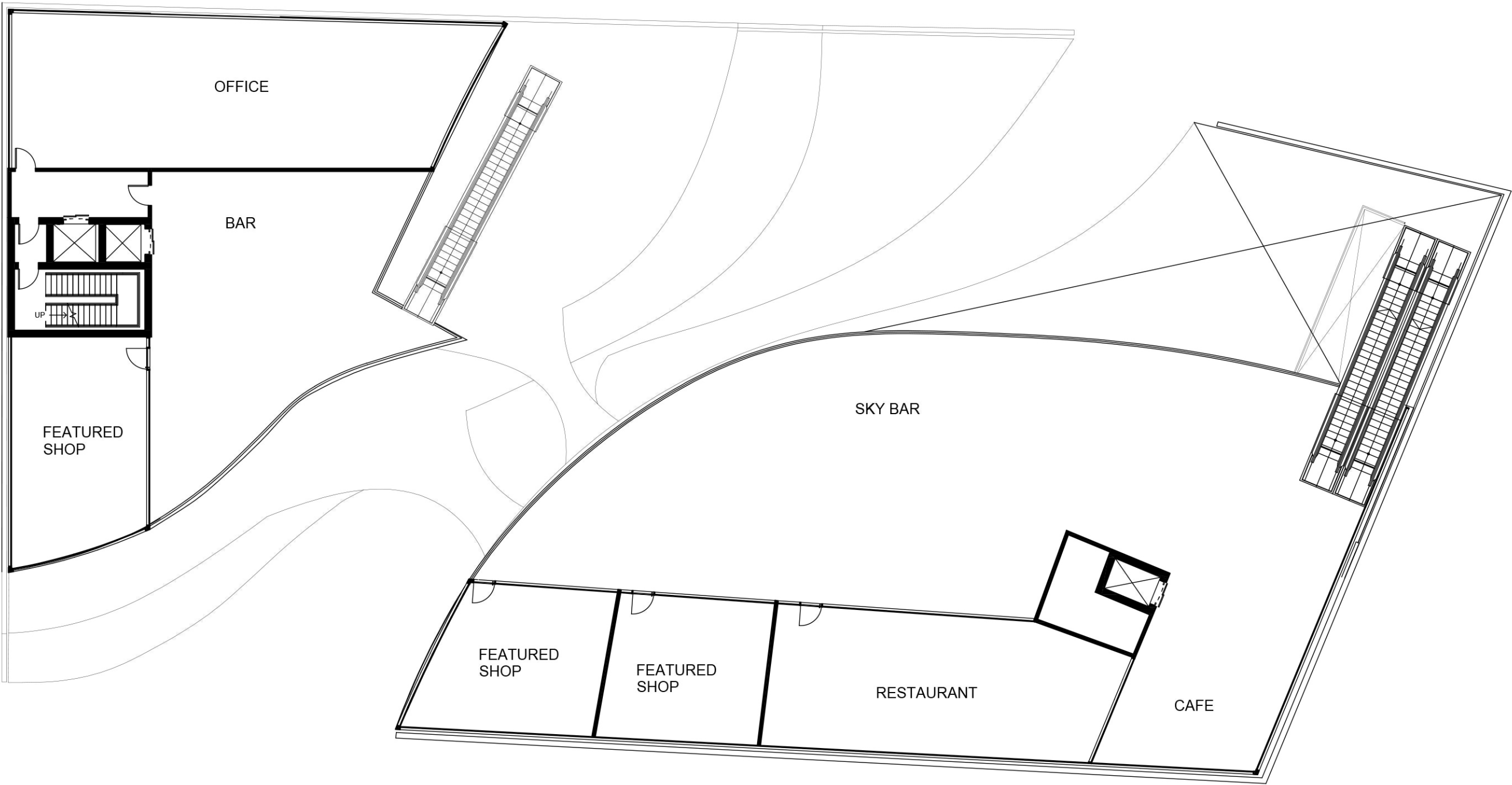
THIRD FLOOR PLAN (1:200)





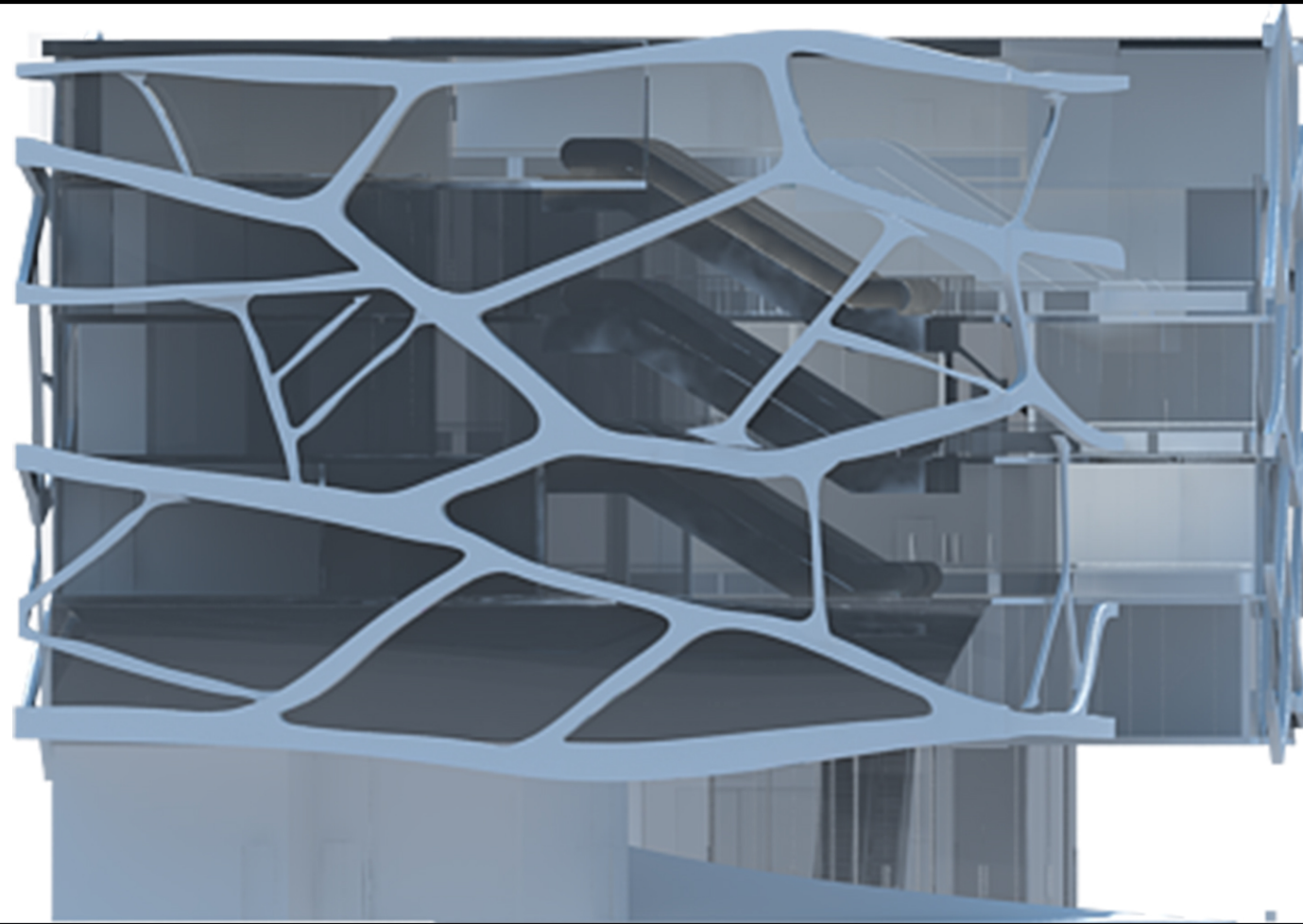
FORTH FLOOR PLAN (1:200)



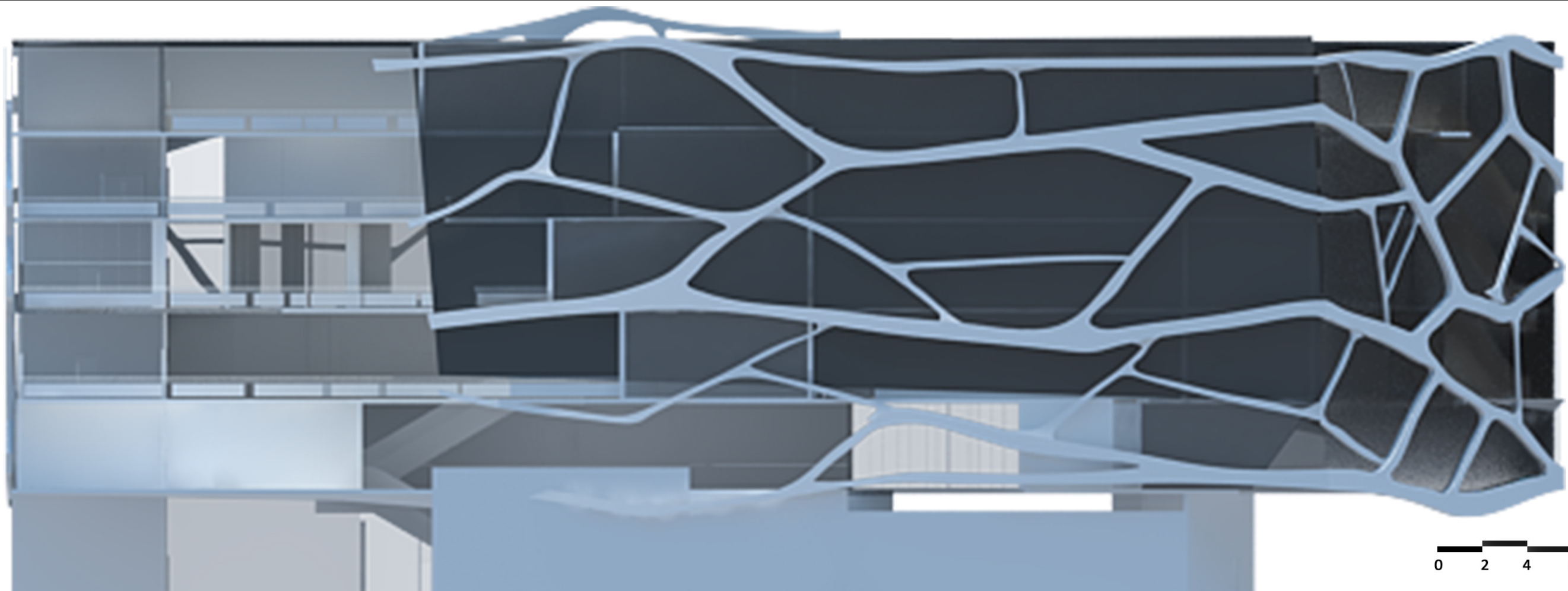


FIFTH FLOOR PLAN (1:200)

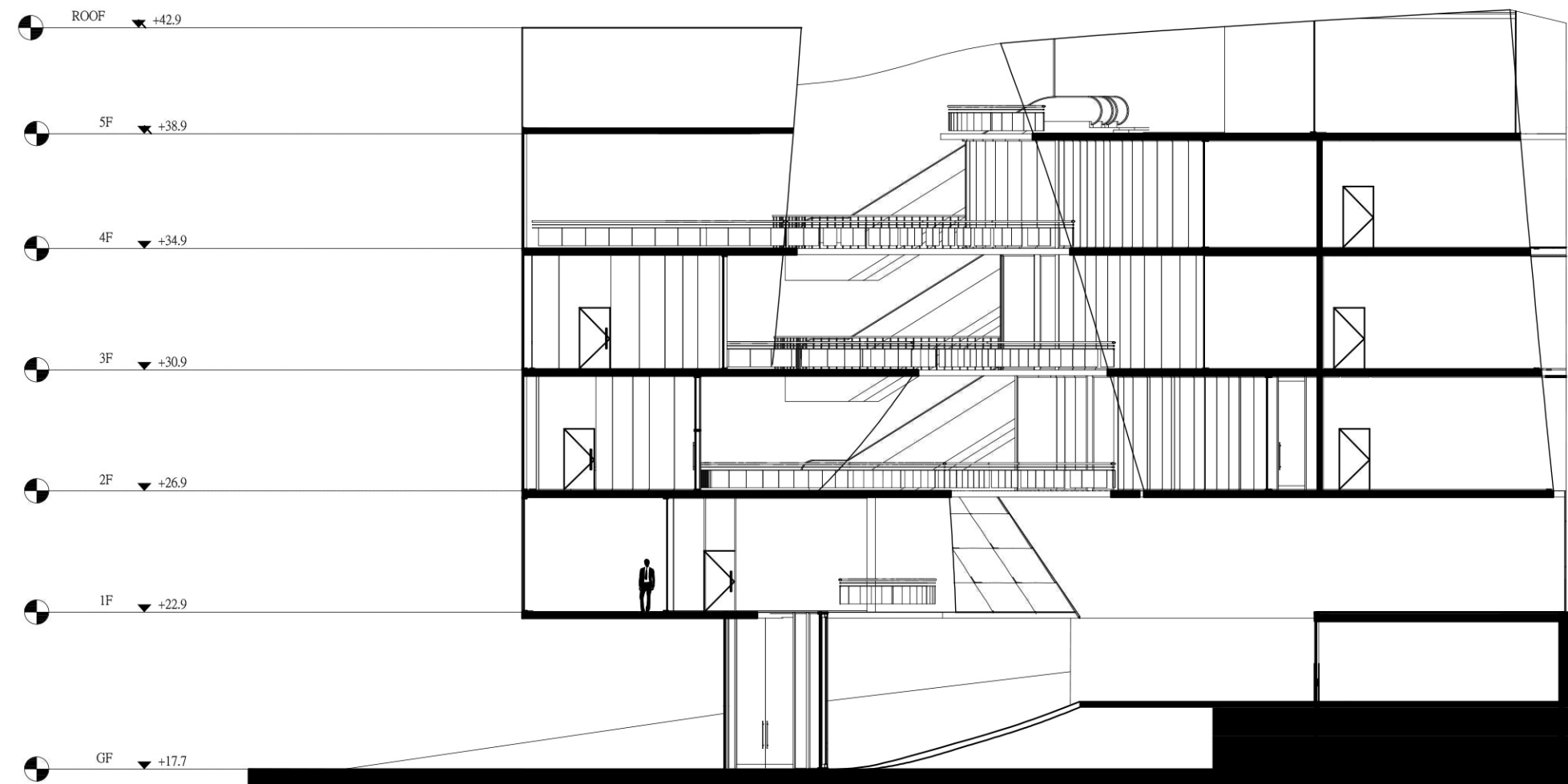




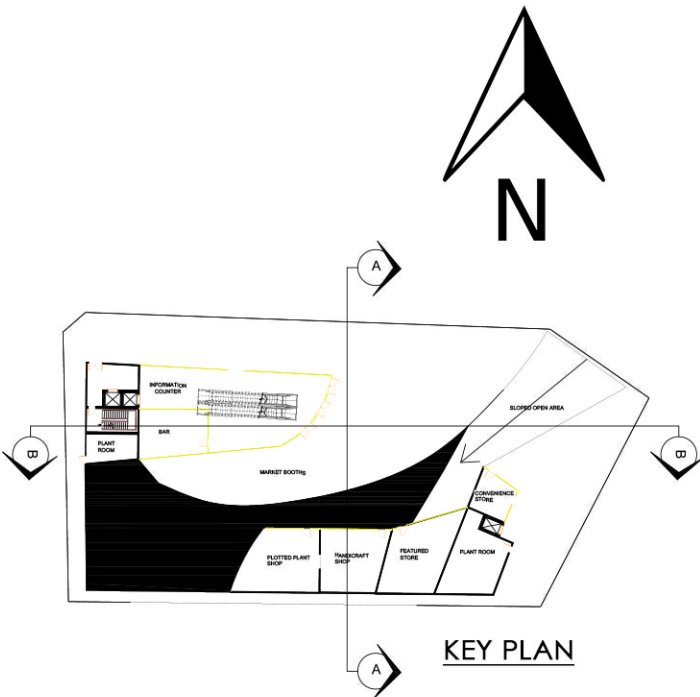
EAST ELEVATION (1:200)



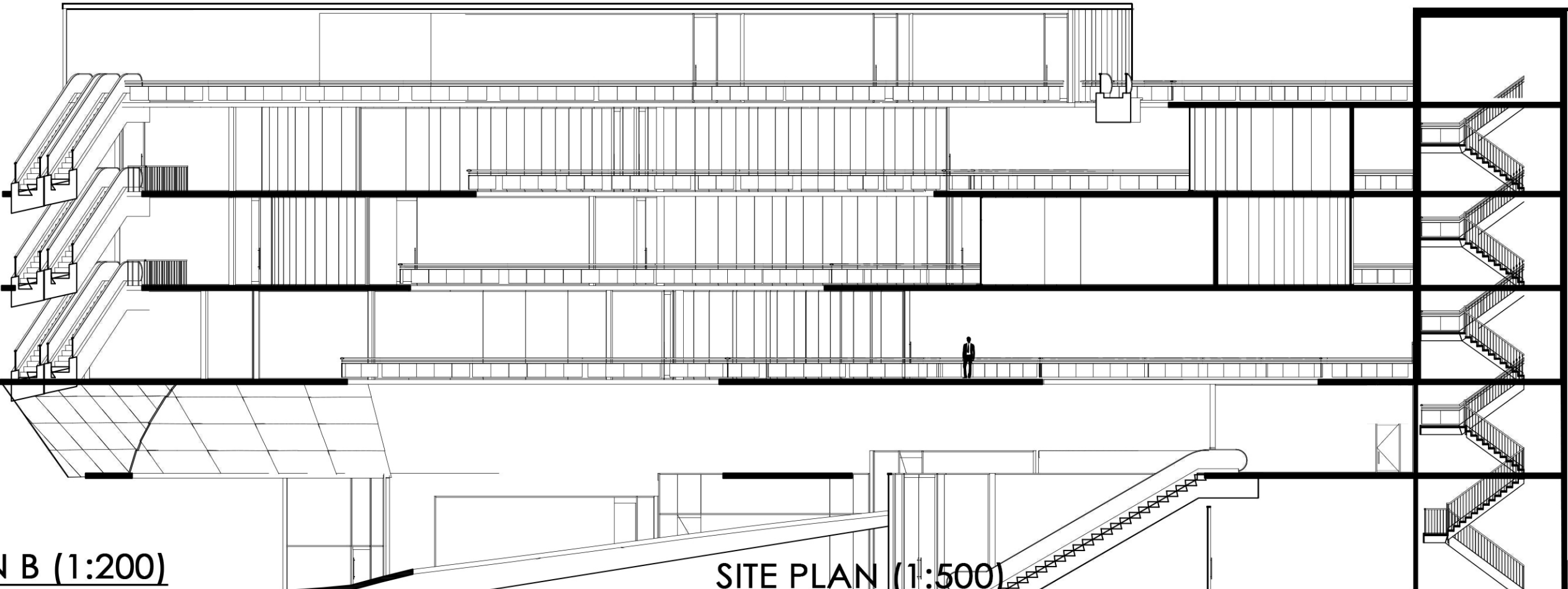
SOUTH ELEVATION (1:200)



SECTION A (1:200)



KEY PLAN



SECTION B (1:200)

SITE PLAN (1:500)



