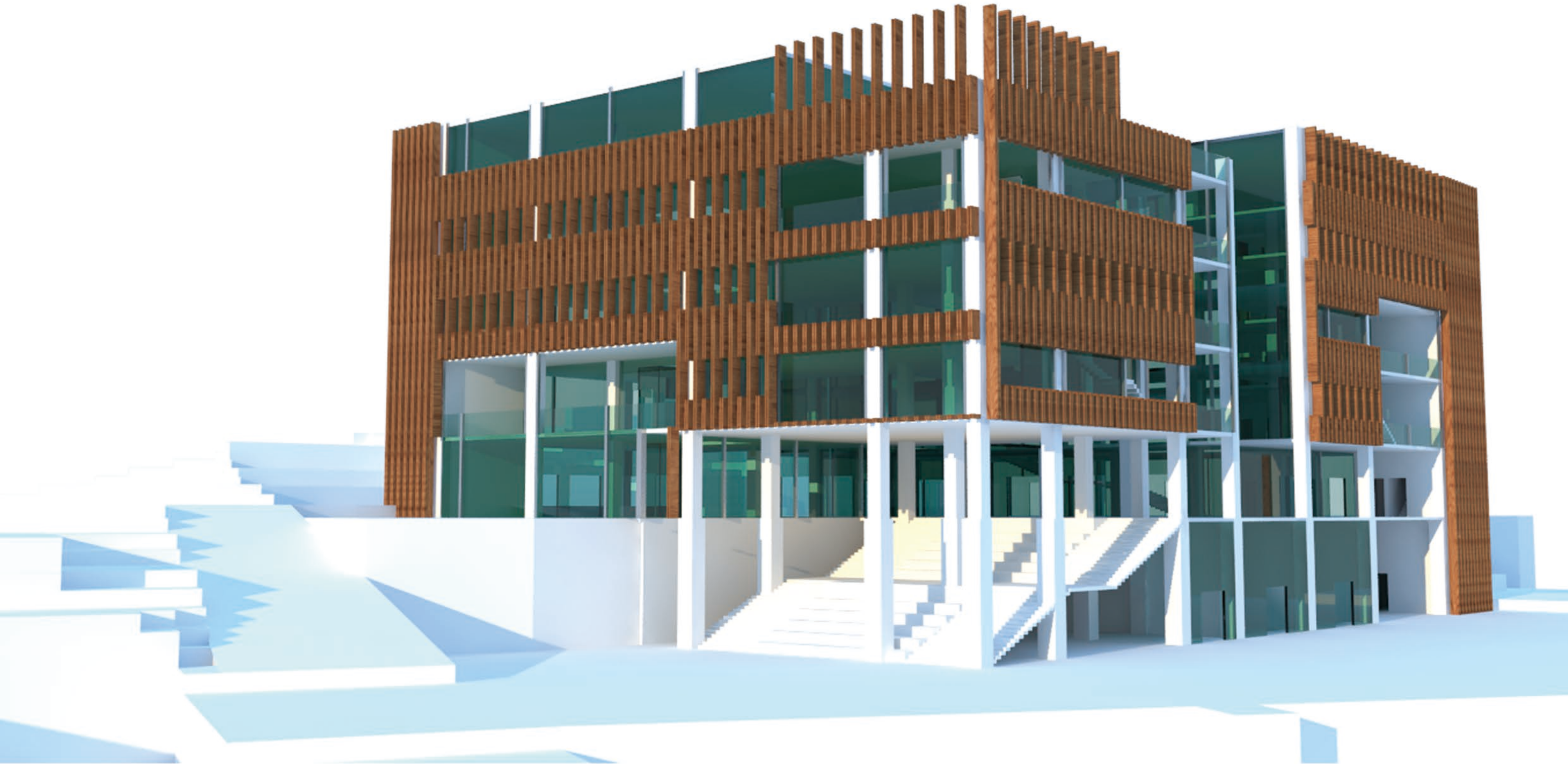


# THEME: MICRO-COMMUNITY

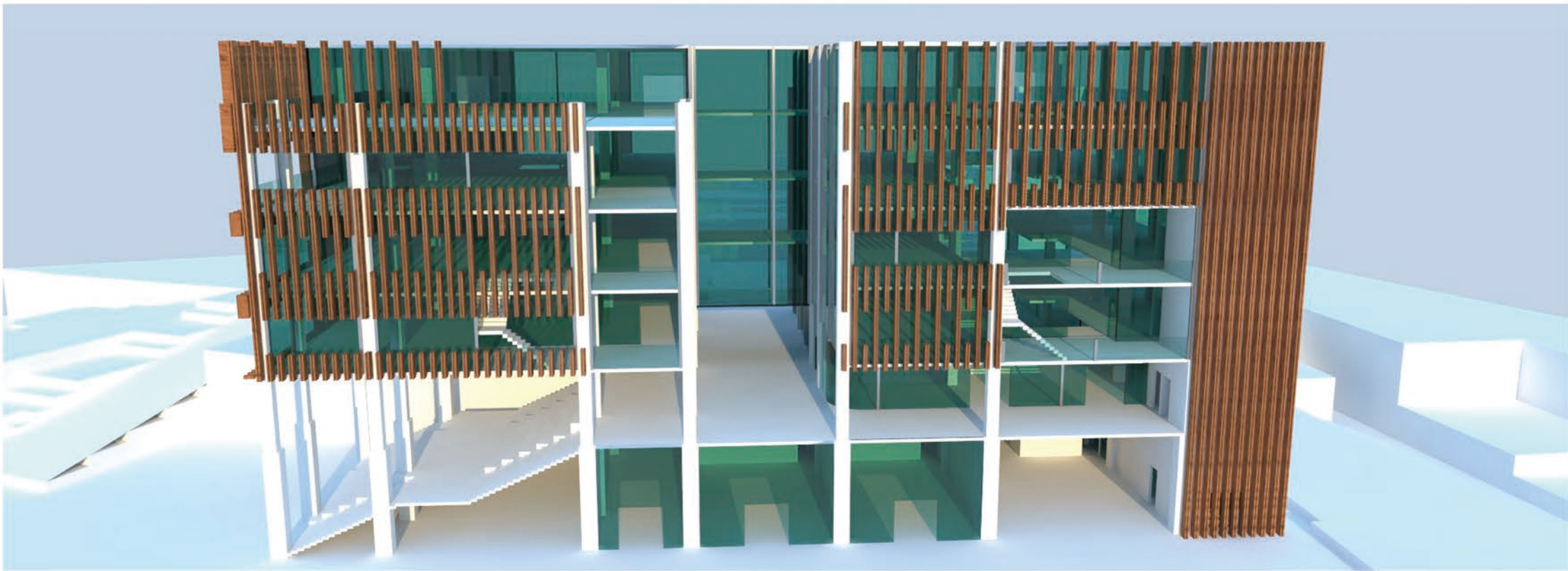
IMITATION OF TENEMENT BUILDING FORM  
CONNECTION OF OPEN SPACE  
RESPECT URBAN FABRIC  
SUSTAINABLE

BY: KAVIN CHAN 53091564



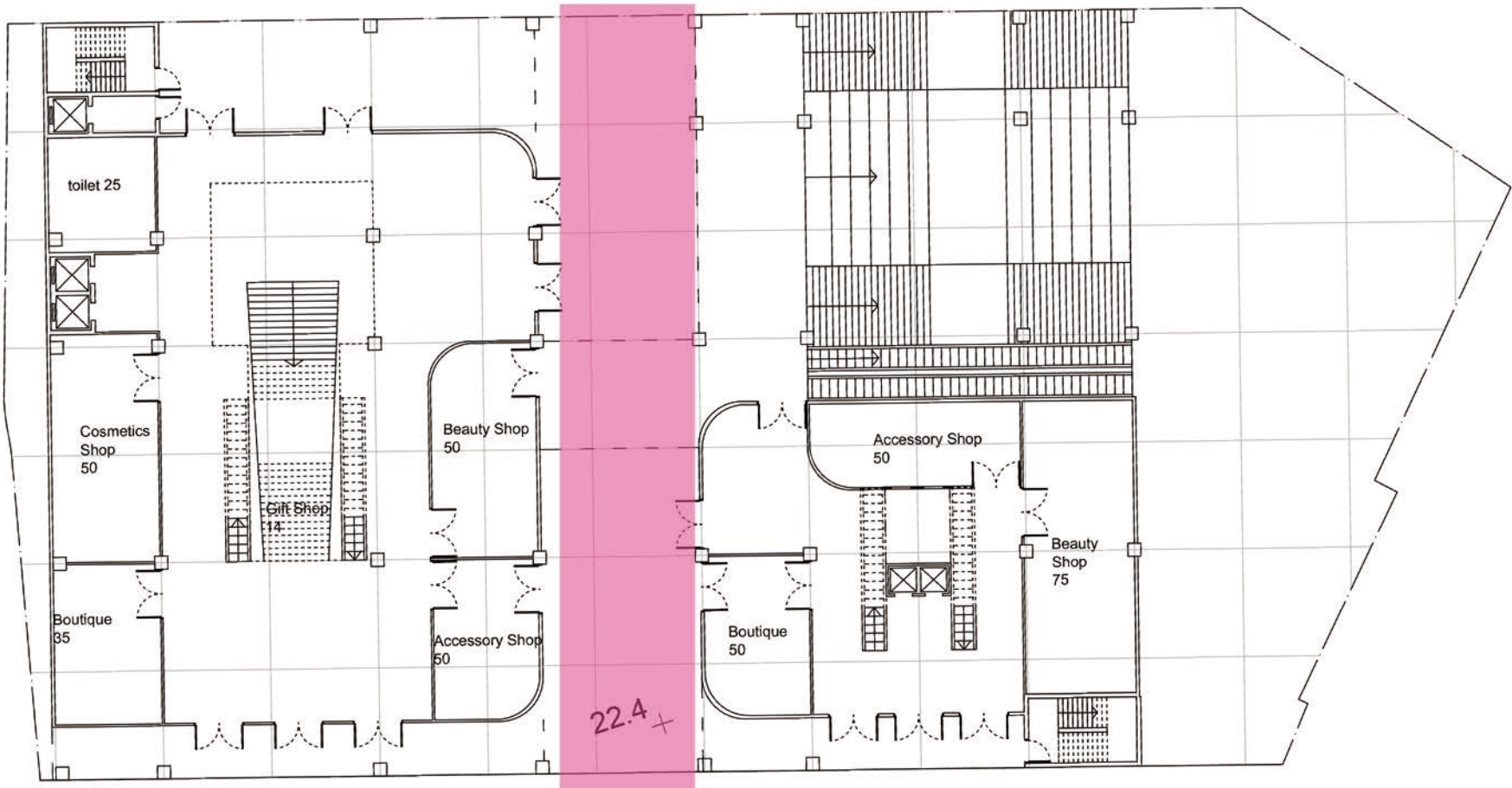
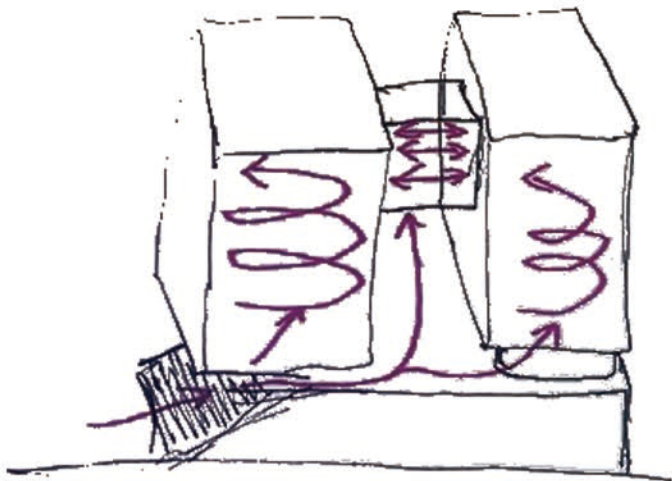


IMITATION OF TENEMENT BUILDING FORM



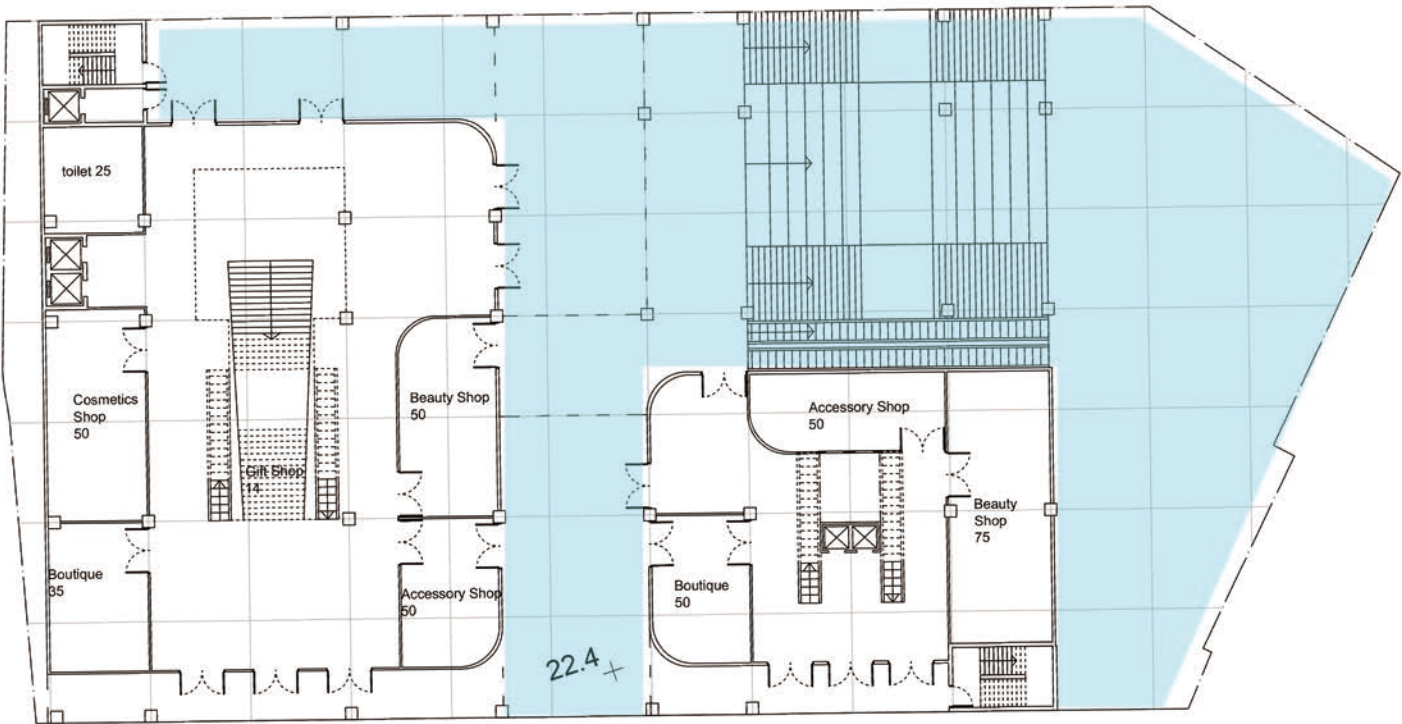
RESPECT THE CITY FARBIC

BY CREATING A NEW PATH WITHIN THE SITE



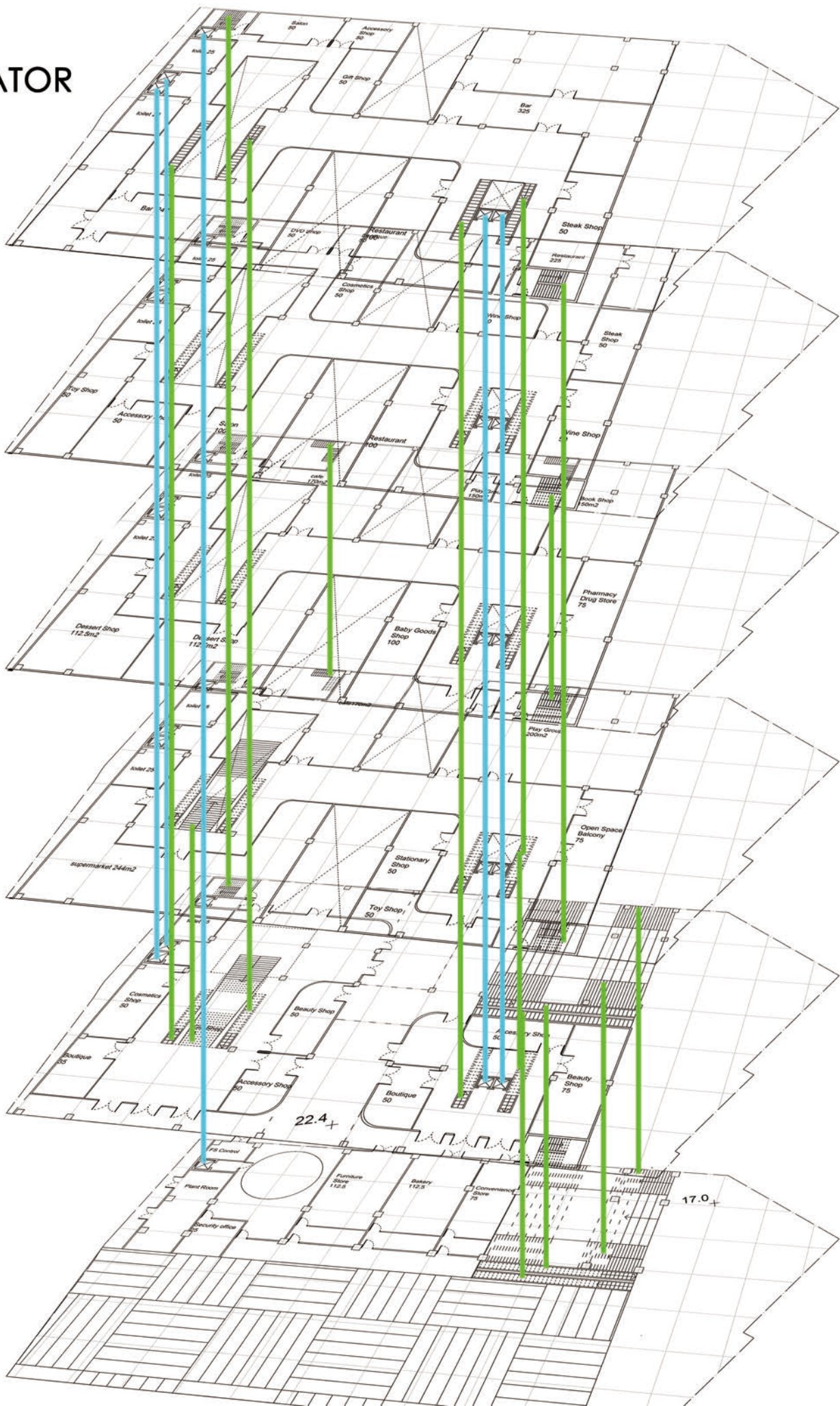


CONNECTION OF OPEN SPACE



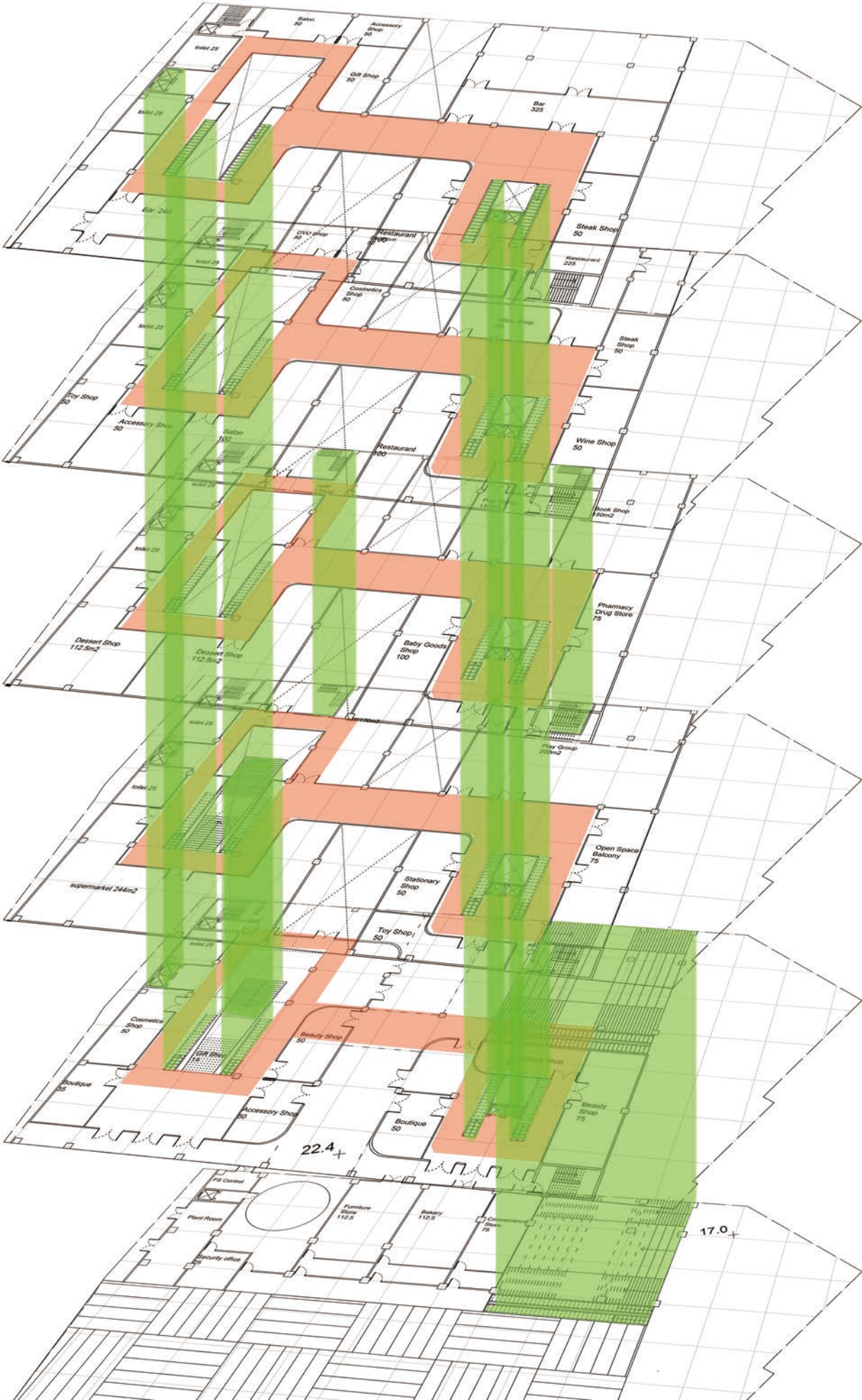
— LIFT  
— STAIR & ESCALATOR

INCREASE SUSTAINABILITY  
BY ALLOWING MORE AIR FLOW AND ATTRACTION OF DAYLIGHT

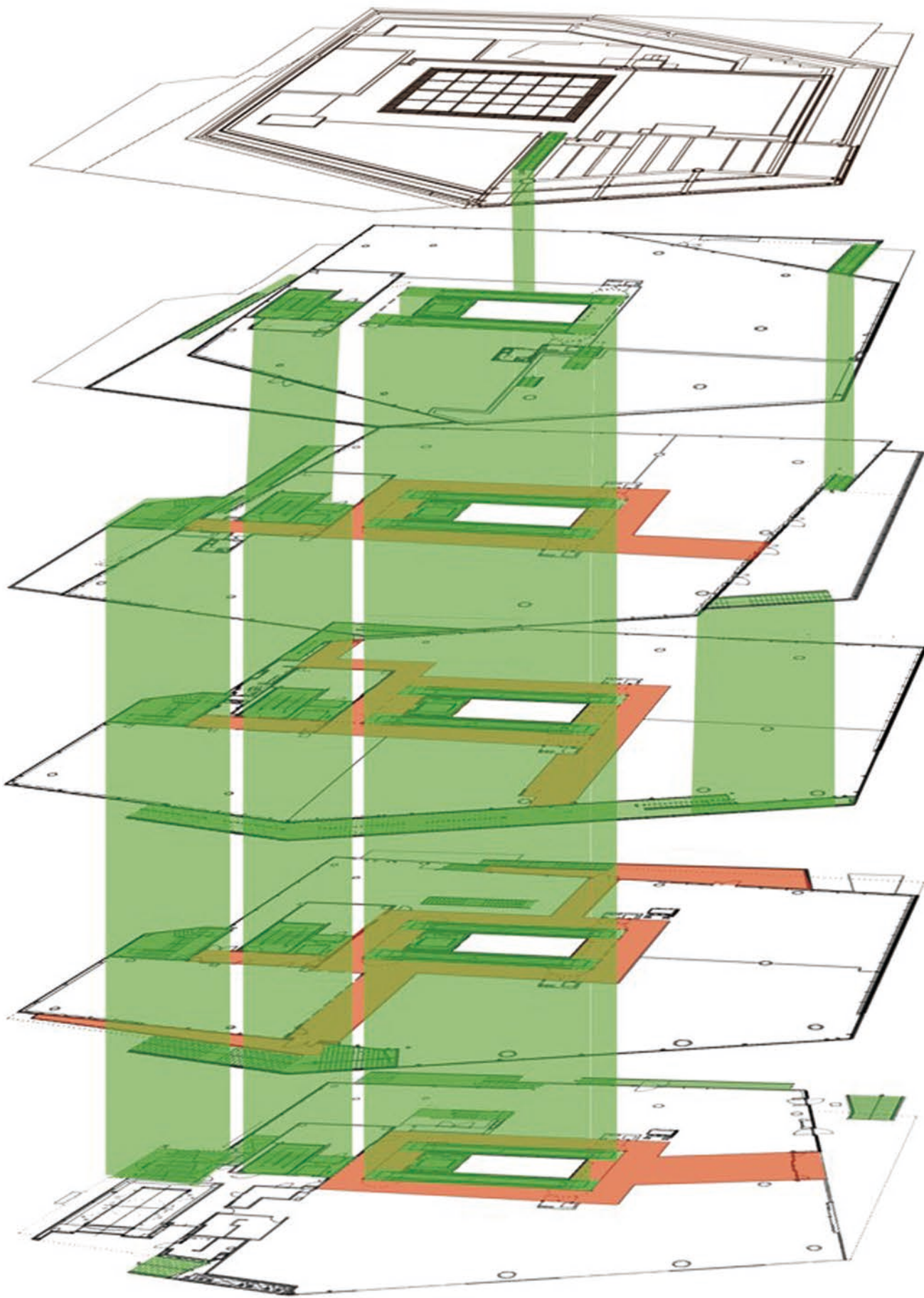




TYPOLOGY INSPIRATION

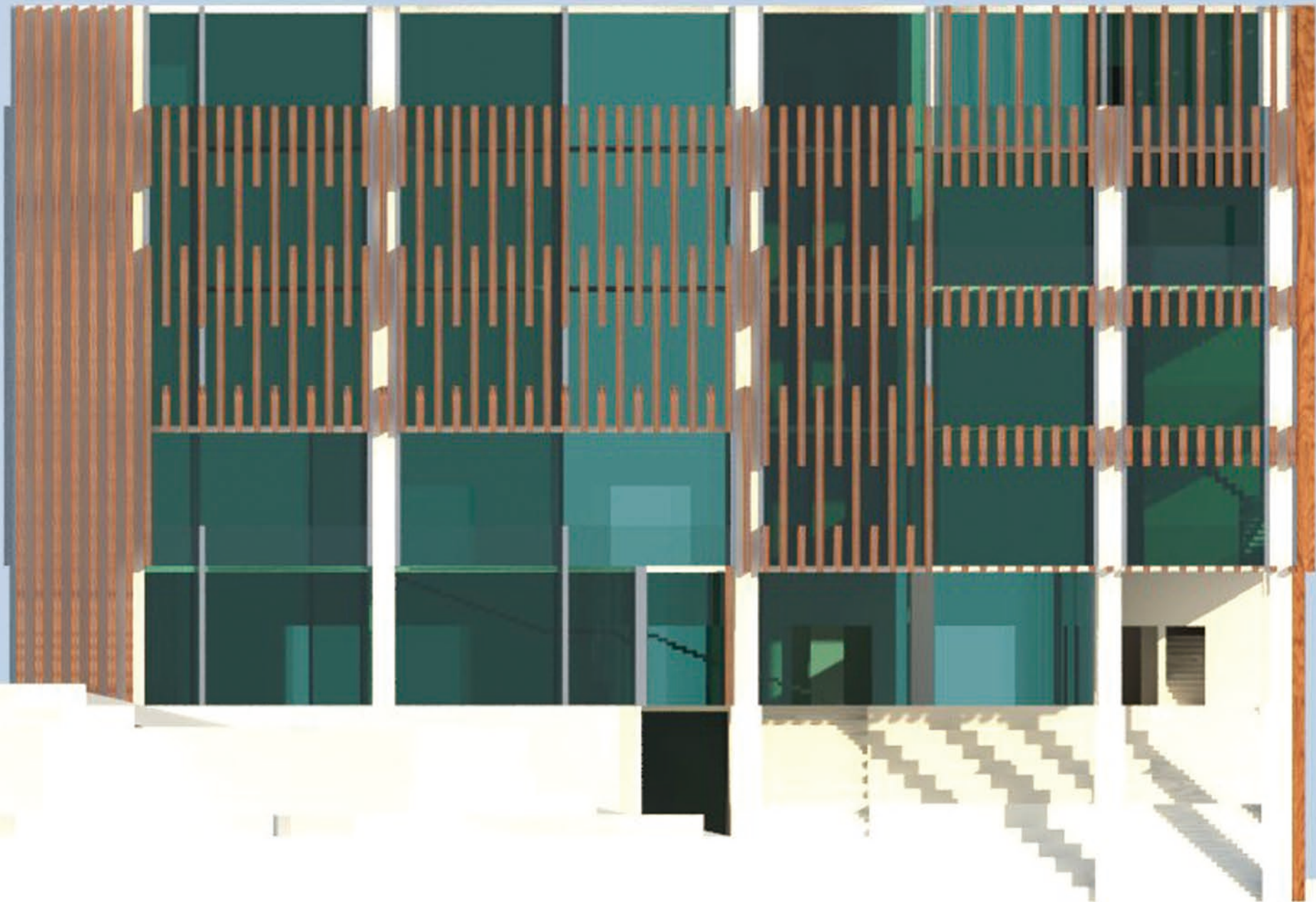
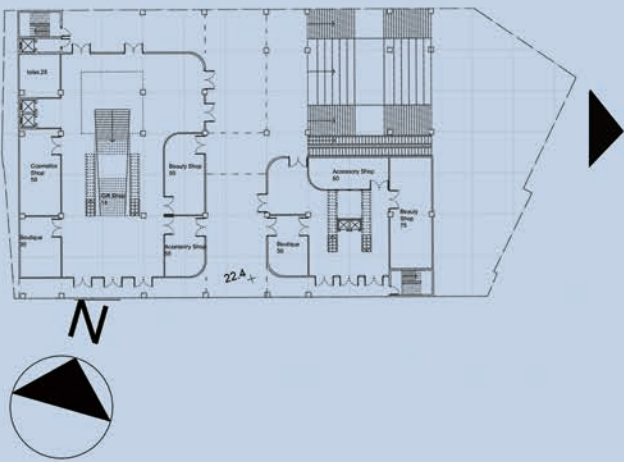


GYRE SHOPPING CENTER IN JAPAN





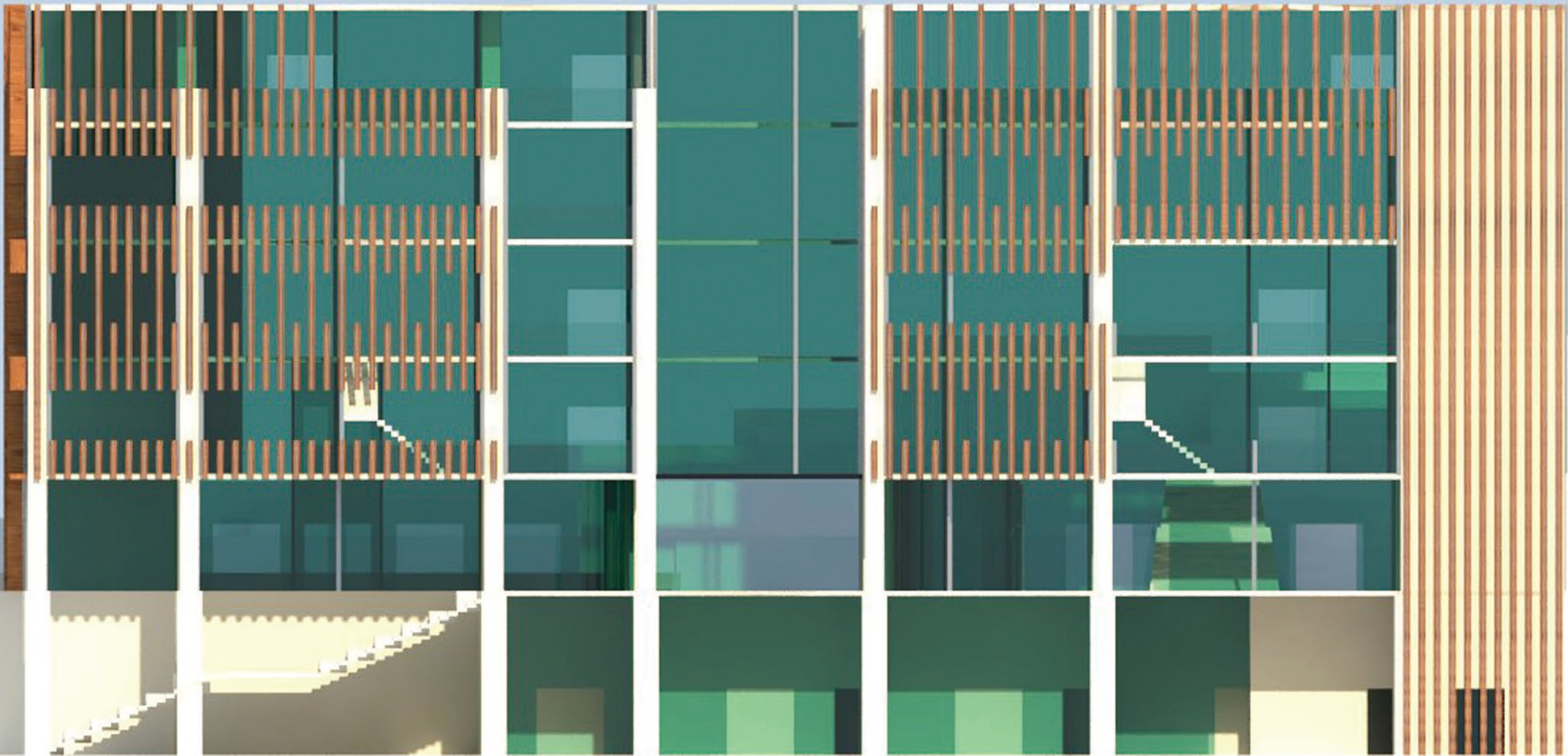
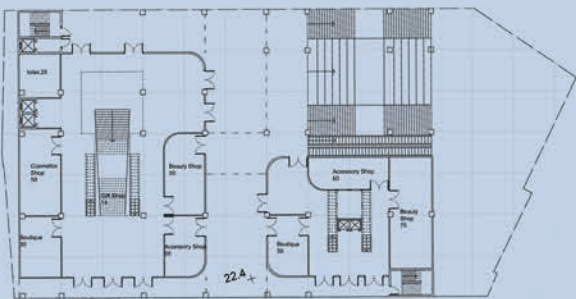
ELEVATION 1



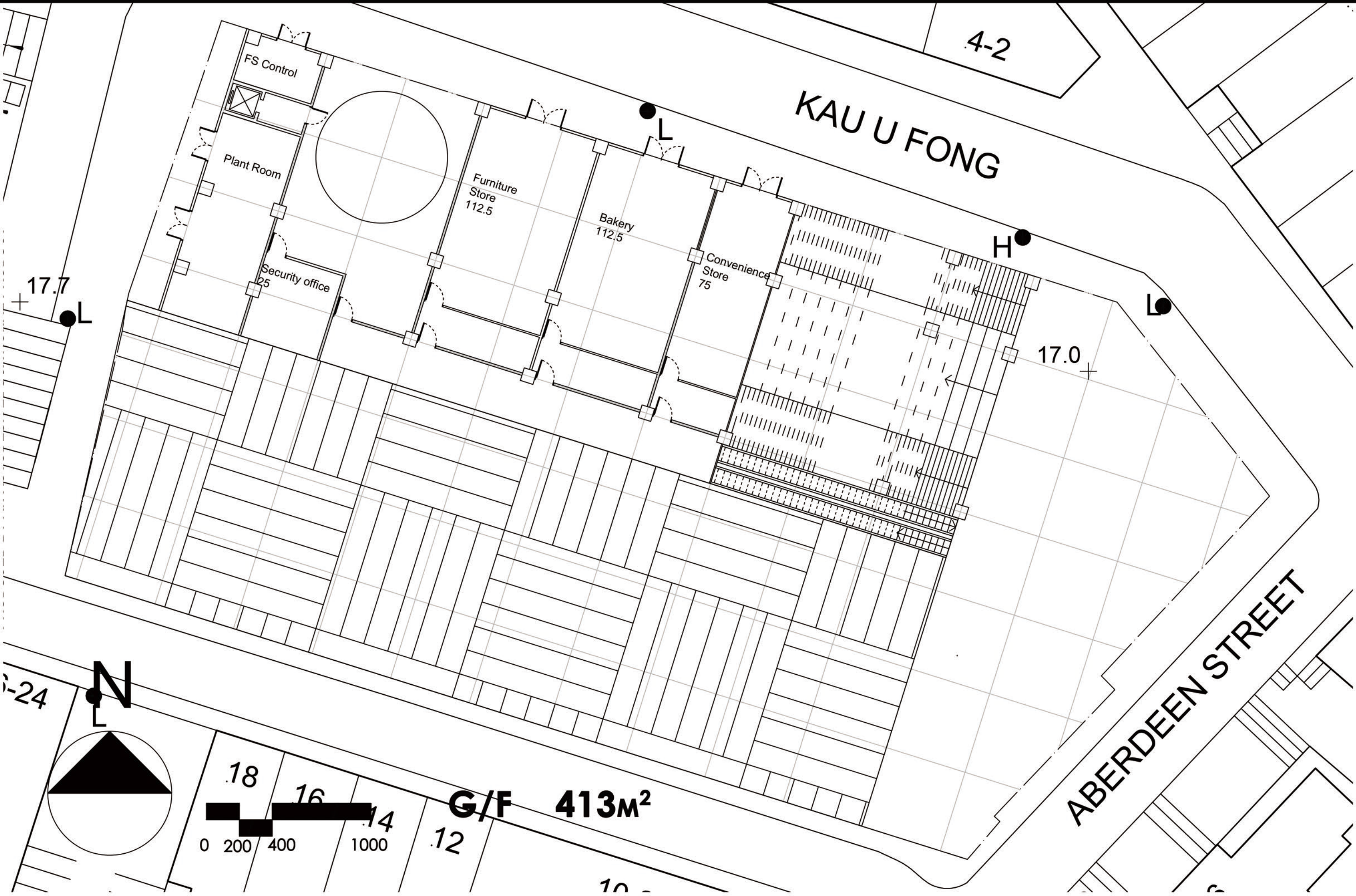
0 150 300 750



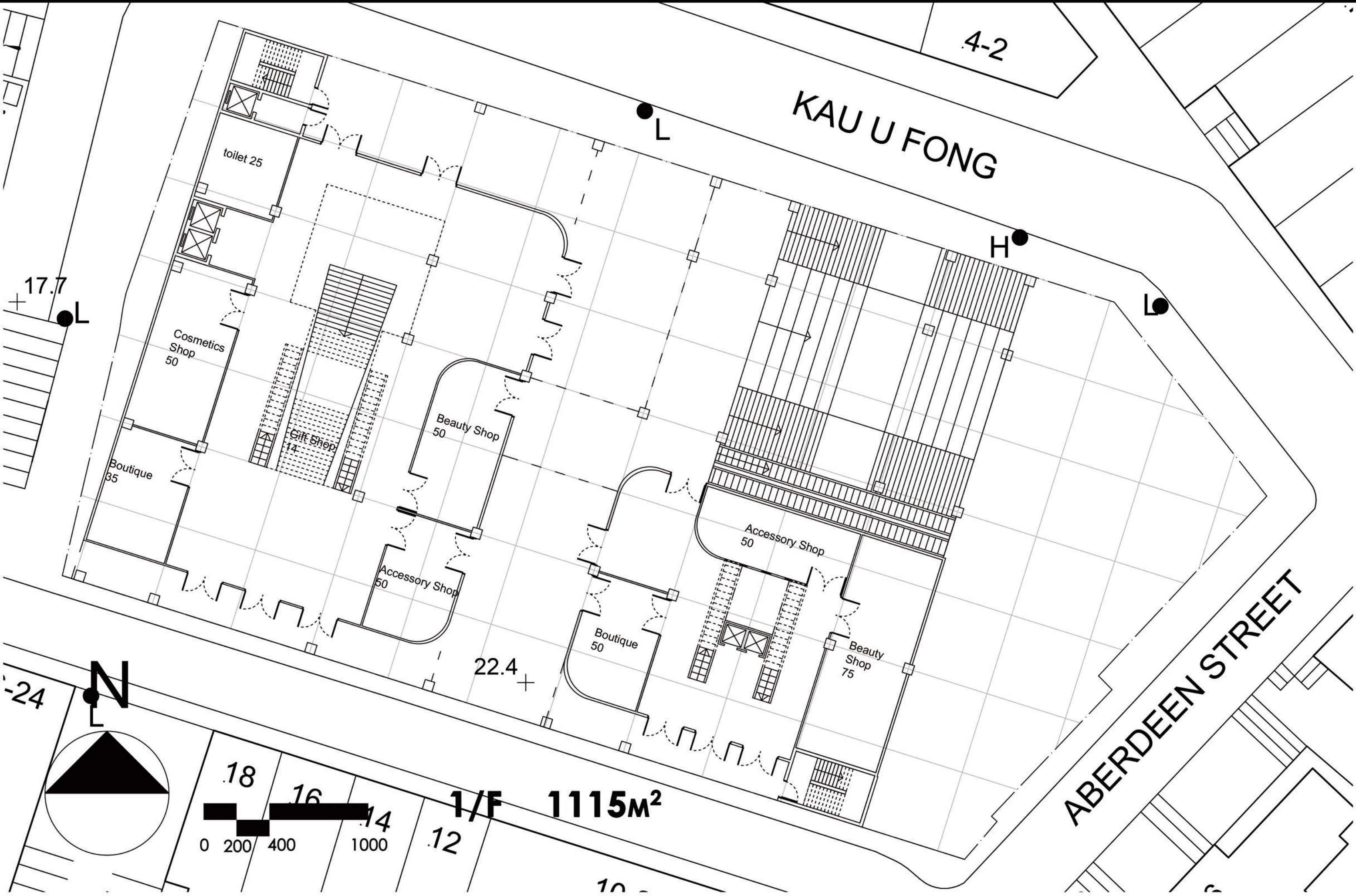
ELEVATION 2



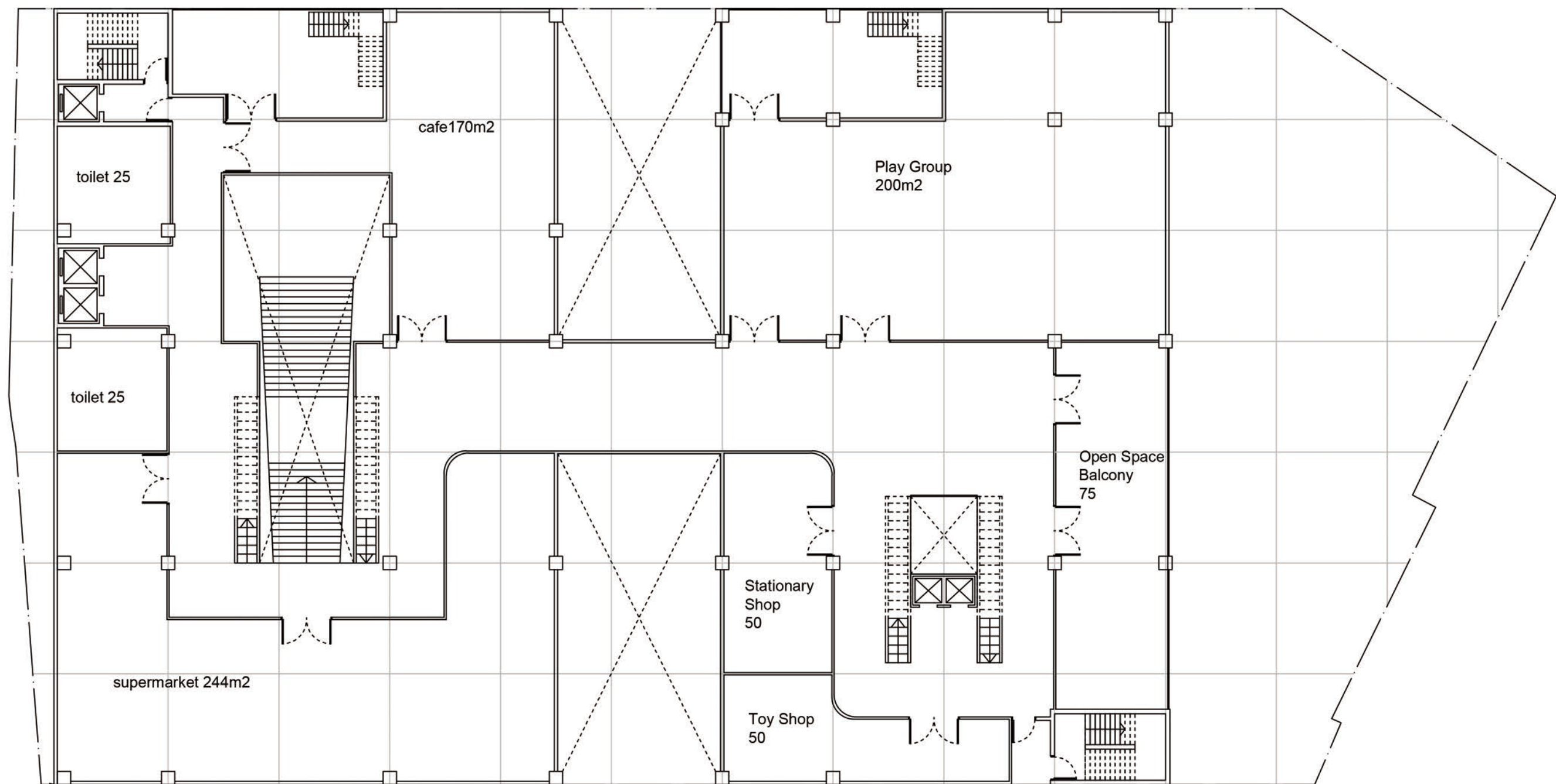




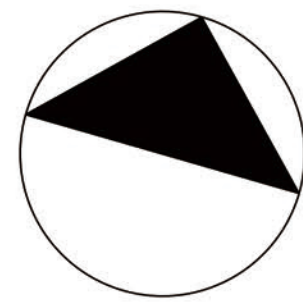






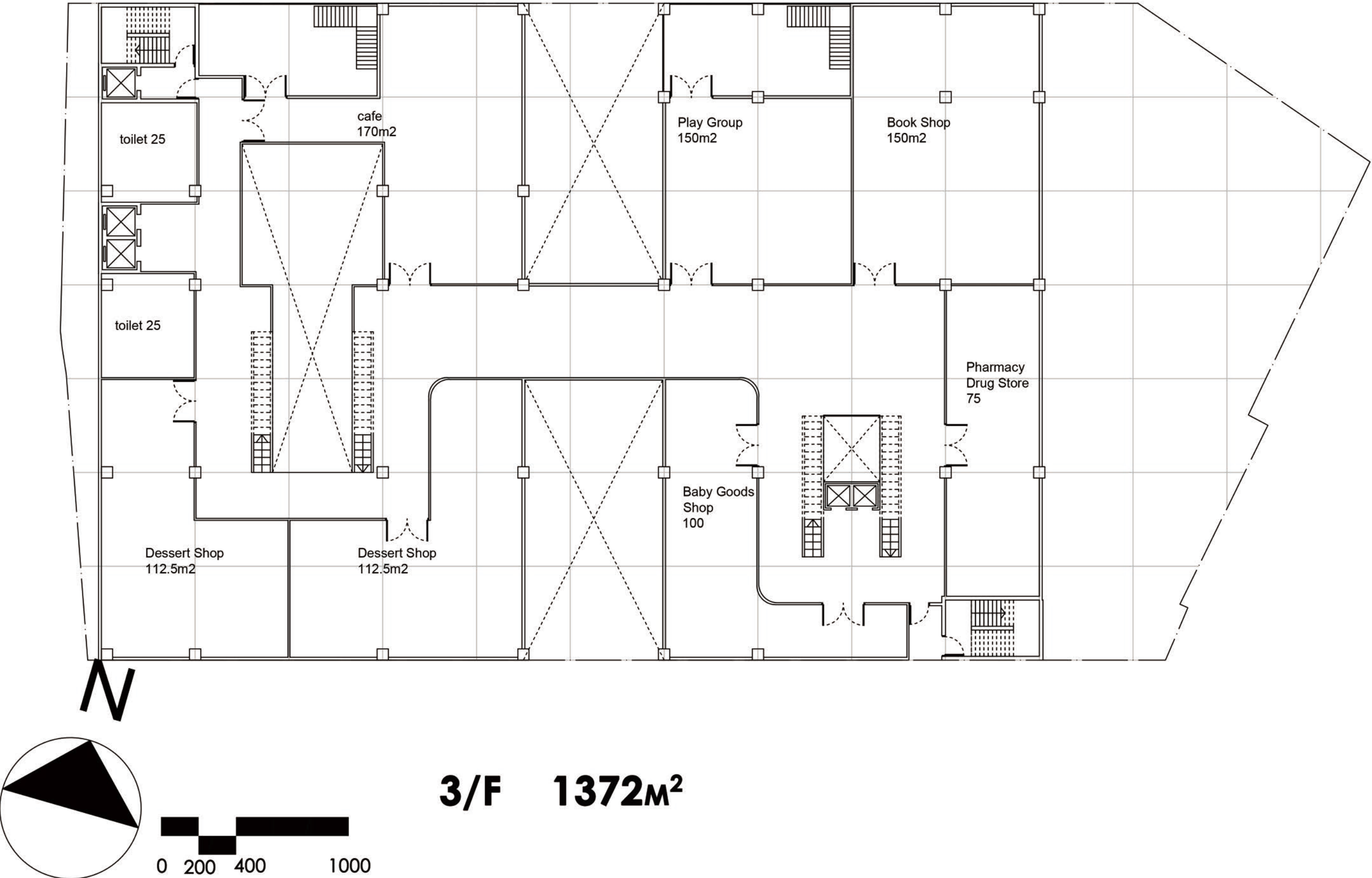


N

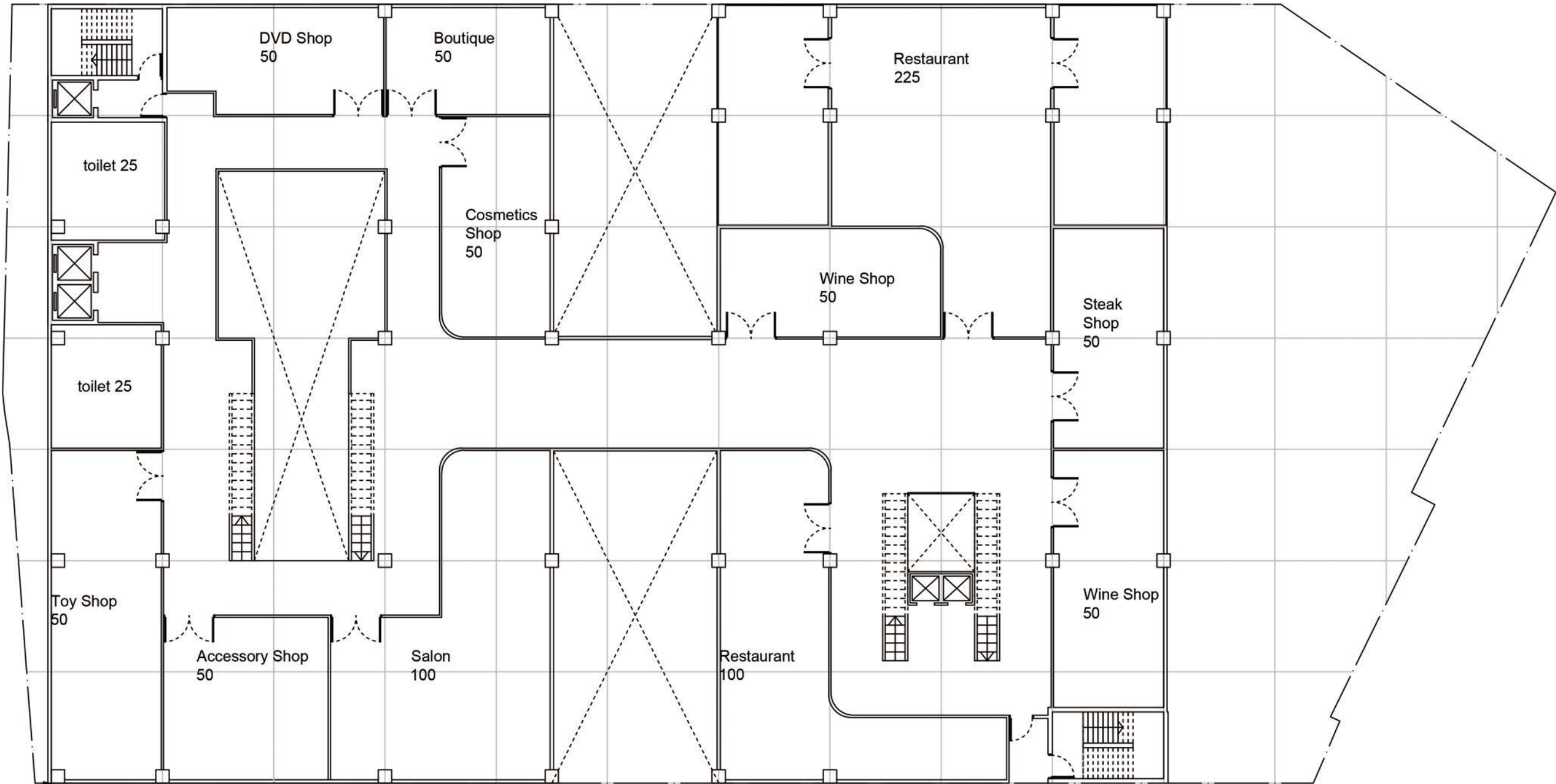


2/F 1372M<sup>2</sup>

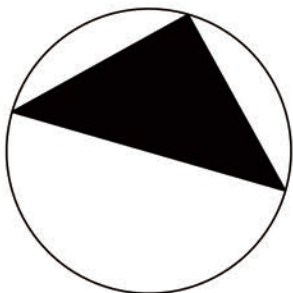








N



4/F 1372M<sup>2</sup>



